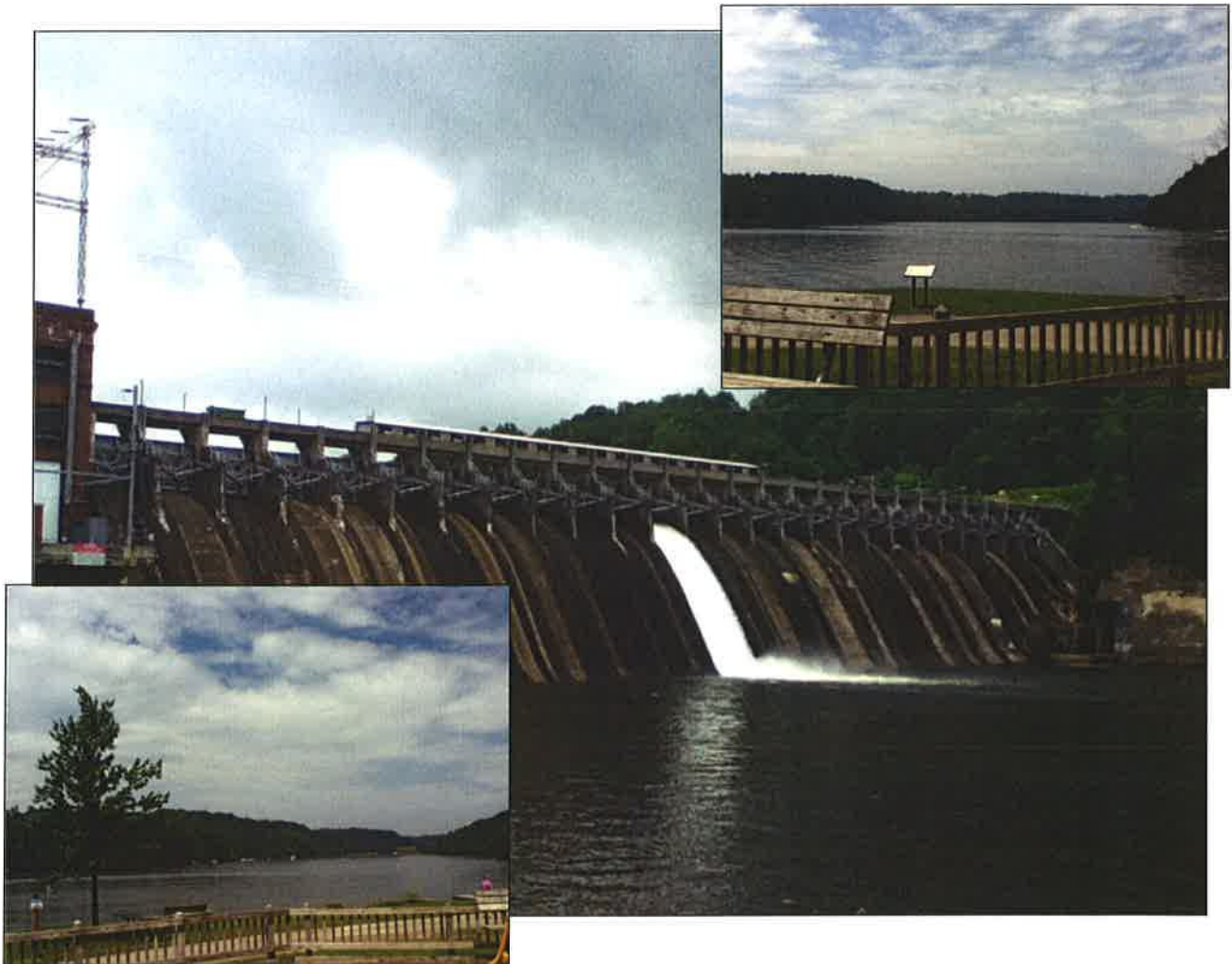


**LAKE LYNN HYDROELECTRIC PROJECT**  
**2015 Recreation Plan Update**  
**FERC Project No. 2459 - License Article 417**



---

**Lake Lynn Generation, LLC**

**February 2015**

## TABLE OF CONTENTS

<b>LIST OF FIGURES .....</b>	<b>ii</b>
<b>LIST OF TABLES .....</b>	<b>ii</b>
<b>LIST OF ATTACHMENTS .....</b>	<b>ii</b>
<b>ABBREVIATIONS, ACROMNYMS, AND UNITS.....</b>	<b>iii</b>
<b>LIST OF TABLES.....</b>	<b>ii</b>
<b>LIST OF ATTACHMENTS .....</b>	<b>ii</b>
<b>1.0 INTRODUCTION.....</b>	<b>1</b>
<b>2.0 RECREATION FACILITIES.....</b>	<b>1</b>
2.1 Cheat Lake Park .....	1
2.2 Hiking/Biking Trail .....	3
2.3 Tailrace Recreation Area.....	5
2.4 Wildlife Habitat and Nature Viewing Areas (NVAs).....	5
2.5 Privilege Permit Areas .....	6
2.6 Public Boat Launching Facility.....	6
2.7 Maintenance of Lake Levels .....	7
2.8 Minimum Flows to the Lower Cheat River .....	7
2.9 Security and Maintenance .....	7
<b>3.0 TRIENNIAL RECREATION PLAN UPDATE .....</b>	<b>8</b>
3.1 Recreational Use Study Methodology.....	8
3.2 Recreation Data Results and Adequacy of Facilities.....	8
3.3 Proposed Changes .....	13
3.4 Agency Consultation/Public Meeting .....	13
3.5 Project Specific Issues per Article 417 .....	13
3.5.1 Trail Signs and Map.....	13
3.5.2 Recreation Trails, Safety and Security.....	14
3.5.3 Boating and Navigation .....	14
3.5.4 Swimming .....	15
3.5.5 Camping .....	15
3.5.6 Other .....	15
<b>4.0 SUMMARY/CONCLUSIONS.....</b>	<b>16</b>

## LIST OF FIGURES

<u>Number</u>	<u>Title</u>
Figure 1	Lake Lynn Hydroelectric Project Recreation Facility
Figure 2	Total and Peak Weekend Recreation Days at All Lake Lynn Areas, 2006-2014
Figure 3	Total Recreation Days for Most Popular Uses at Cheat Lake Park and Tailrace Fishing Area, 2012-2014
Figure 4	Total and Peak Weekend Recreation Days at Sunset Beach Marina, 2006-2014
Figure 5	Total and Peak Weekend Recreation Days at Tailrace Fishing Area, 2006-2014

## LIST OF TABLES

<u>Number</u>	<u>Title</u>
Table 1	Visitors at Lake Lynn Hydroelectric Project During the 2012-2014 Period
Table 2	Lake Lynn Hydroelectric Project: Visitors at Most Popular Sites on All Recreation Days During the 2012-2014 Period

## LIST OF ATTACHMENTS

<u>Number</u>	<u>Title</u>
Attachment I	Order Approving Recreation Plan Update Pursuant to Article 417 Issued October 9, 2012
Attachment II	Facility Use Data for Cheat Lake Park, Sunset Beach Marina, and Tailrace Fishing Area, 2012-2014
Attachment III	Public Meeting Minutes, Presentation, and Sign-In Sheet (to be included in final 2015 Recreation Plan Update)
Attachment IV	Lake Lynn Recreation Plan Comments and Responses (to be included in final 2015 Recreation Plan Update)

## LIST OF ABBREVIATIONS, ACRONYMS, AND UNITS

ADA	American with Disabilities Act
AE	Allegheny Energy Supply Co. LLC
CLEAR	Cheat Lake Environment and Recreation Association
CFS	Cubic Feet Per Second
DOI	Department of the Interior
FERC	Federal Energy Regulatory Commission
LLG	Lake Lynn Generation, LLC
N/A	Not Applicable
NGVD	National Geodetic Vertical Datum
NVA	Nature Viewing Area
PFBC	Pennsylvania Fish and Boat Commission
WVDEP	West Virginia Department of Environmental Protection
WVDNR	West Virginia Division of Natural Resources
WVDOT	West Virginia Department of Transportation

## 1.0 INTRODUCTION

In accordance with the Federal Energy Regulatory Commission (FERC), “*Order Modifying and Approving Recreation Plan*”, dated April 11, 1997, Lake Lynn Generation, LLC (LLG), as the licensee for the Lake Lynn Hydroelectric Project (Lake Lynn Project or Project), is required to file the triennial Recreation Plan Update for the Lake Lynn Hydroelectric Project by April 1, 2015. This 2015 Recreation Plan Update was prepared in accordance with the guidance listed in FERC License Article 417 that identifies the type of information to be addressed in the plan update. A general description of the existing facilities is provided in Section 2 while the plan update information is provided in Section 3. Supporting documentation is provided in Attachments I through IV.

In February 2014, the Lake Lynn Hydroelectric Project was purchased by LLG from FirstEnergy subsidiaries Allegheny Energy Supply Co. LLC (AE). The FERC license for the Lake Lynn Hydroelectric Project was transferred to LLG on 21 February 2014.

## 2.0 RECREATION FACILITIES

Lake Lynn Hydroelectric Project includes a multi-purpose recreational facility encompassing 46 acres on the peninsula between the Rubles Run and Morgans Run embayments of Cheat Lake. The purpose of the park is to preserve and enhance public utilization opportunities at the Lake Lynn Hydroelectric Project. This facility is located in Monongalia County, West Virginia, approximately 10 miles northeast of Morgantown, West Virginia. This multi-purpose recreational facility including Cheat Lake Park and the Cheat Lake Trail opened in June 2000 and is currently operated as a day use facility, with the exception of nighttime fishing. In addition, LLG provides fishing opportunities at the Lake Lynn Project’s tailrace area and provides a free boat launch in cooperation with a nearby marina on Cheat Lake. A map depicting the existing recreational facilities at the Lake Lynn Project is provided in Figure 1 and discussed in more detail in the following subsections.

### 2.1 Cheat Lake Park

Cheat Lake Park consists of a developed area primarily situated on a peninsula between two embayments (Rubles Run and Morgans Run) of Cheat Lake. Recreational facilities at Cheat Lake Park include a hilltop and shoreline picnic area, parking areas, a playground area, a nature viewing area, a car-top/winter boat launch, three restroom facilities, a security/maintenance station, day-use boat docks, swimming beach, a fish cleaning station, fishing platforms, and access to the Cheat Lake hiking and biking trail. Cheat Lake Park is accessible from a paved parking area, which can accommodate up to 50 vehicles. A second gravel parking area also provides overflow parking for up to 30 vehicles. A paved roadway provides access from the parking and hilltop picnic area to the facilities along the shoreline of Cheat Lake. The roadway is wide enough to accommodate two-way traffic and pedestrians. A short-term and Americans with Disabilities Act (ADA) accessible parking area for car-top/winter boat launch and bicycle or picnic loading and unloading area is situated near the shoreline area. This parking area provides five parking spaces, without time restrictions, for the disabled.



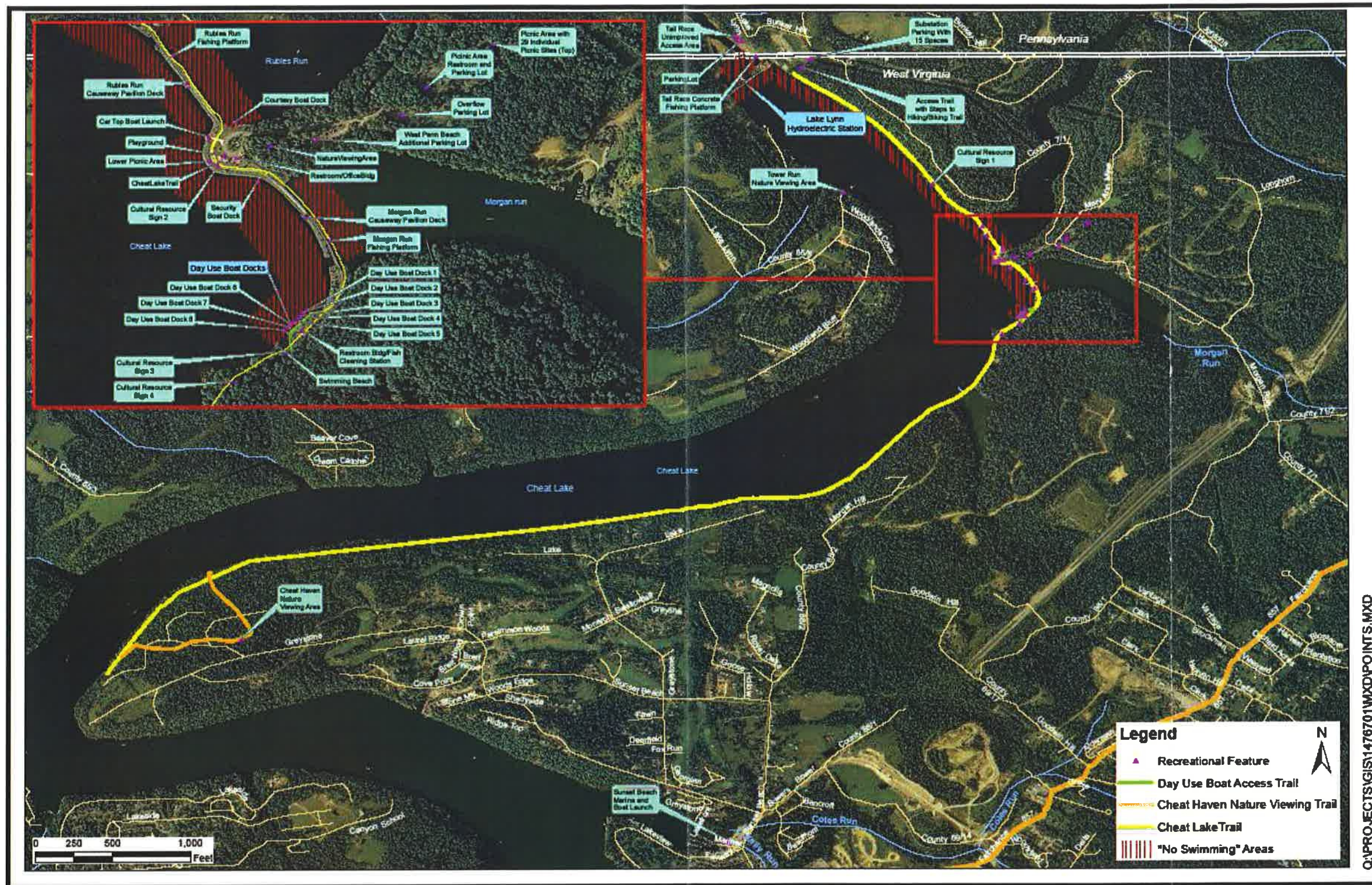


FIGURE 1 - LAKE LYNN HYDROELECTRIC PROJECT RECREATION FACILITY



A hillside loop provides access to a picnic area that consists of 19 picnicking sites, each with its own table, fire ring grill and parking for two vehicles. One of these picnic sites includes handicapped accessible parking. In addition, the picnic area includes a restroom facility and 11 parking spaces, of which two are ADA accessible. A total of 29 picnic tables are situated within the picnic loop and at sites near the Lake.

Two courtesy docks, both ADA accessible at the normal recreational pool levels of 868 to 870 feet, are available for car-top boat users. One courtesy dock is located on the main body of the lake and the other in the Rubles Run embayment behind the new timber bridge structures, constructed to replace the old railway causeway. The courtesy dock that is located on Cheat Lake has been modified to provide winter access for motor boats from November 1 to March 31. This is described later in this document.

Two timber bridge structures constructed over the Morgan Run and Rubles Run embayments provide access to the 4.5-mile hiking/biking trail along the lake shoreline, additional picnic areas, and added fishing access. The bridge structures at Rubles and Morgan Runs both have a pavilion deck with picnic tables and a 200-foot long fishing platform, which provides access for fishermen. Both bridges at Morgan and Rubles Runs have a 13-foot clearance when the lake is at maximum depth to allow most boaters access to the embayments. Although the bridge structures are intended for pedestrians only, they are capable of supporting emergency and maintenance vehicles weighing up to 10 tons.

Three restroom facilities have been constructed at the park. All of the restroom facilities have indoor lighting and a proper ventilation system for maximum comfort of park visitors. One is located at the peninsula and also provides office space for security and maintenance. The facility is located close to the children's playground. Public telephone service and a drinking fountain are located at this facility. The second restroom facility is located between the Morgan and Manning Run embayments. This provides a convenient location for boaters utilizing the 8 courtesy docks. A fish cleaning station has been installed for public use to provide a sanitary way of eliminating fish waste. The third restroom facility is located at the hilltop picnic area for use by picnickers. The hilltop and peninsula restroom facilities are both ADA accessible.

A small swimming beach was established along the Cheat Lake Trail. This "swim at your own risk area" is approximately 200 feet long and 15 feet wide, and is roped off for swimming. The swimming beach is a natural beach, vegetation was removed and additional sand was added to the area. The beach is located near the restroom facility with the fish cleaning station. The swimming beach is open from dawn to dusk. Four picnic tables were added to the swimming beach area following the public comment period for the 2012 Recreation Plan Update.

## **2.2 Hiking/Biking Trail**

The Cheat Lake Trail at Cheat Lake Park is a 4.5 mile hiking/biking trail that extends from a parking area near the Lake Lynn Hydroelectric Station to its southern terminus at the Cheat Haven Wildlife Habitat and Nature Viewing Area (NVA). The trail is 10-feet wide,

constructed of compacted limestone fines, and ADA accessible. A parking lot near the substation at Lake Lynn Hydroelectric Project accommodates 15 vehicles. The trail can also be accessed from parking lots located at Cheat Lake Park. In 2010, interpretive signs were designed and installed at several historical sites along Cheat Lake Trail which included a map of the trail and facilities at the Cheat Lake Park. Additionally, mile-markers every half-mile throughout the length of the trail were installed.

In 1997, after consultation with the public and local property owners, a trail management plan was filed with FERC regarding public use of the Cheat Lake Trail. In the “*Order Approving Trail Management Plan*” dated March 2, 1998, FERC agreed that the trail is a day-use facility and that there would be no use of the trail during the winter months. Pursuant to the FERC order, a locked gate was constructed at the Mannings Run entrance to the trail. This allows LLG the ability to close the southern-most 3.1- mile section of the trail at dusk during the recreational season and the winter months. In response to public comments and pursuant to “*Order Amending Recreation Plan*” issued May 18, 2010, a one year trial was conducted in order to assess whether the southern section of the Cheat Lake Trail should be permanently opened for year-round use during daylight hours. Following this trial period, it was decided to allow the southern section of the Cheat Lake Trail to remain open for year-round use during daylight hours; however, because of safety concerns, the trail may be closed temporarily if snow and/or ice are present or other hazardous conditions exist. The northernmost 1.4 mile section of Cheat Lake Trail, from the Lake Lynn Hydro Station to the park, also continues to be open year-round, as long as safe conditions exist. Additionally, following FERC’s recommendations in the “*Order Amending Recreation Plan*” issued May 28, 2010, hikers are informed of trail closures by posting signs on the Morgan’s Run Bridge. Previously, posting of trail closures was also available on the park website ([www.cheatlaketoday.com](http://www.cheatlaketoday.com)); however, this website no longer exists since the transfer of the Project to LLG.



**Picture 1.** Interpretive Sign of Cheat Haven and Bruceton Railroad Site



### 2.3 Tailrace Recreation Area

The tailrace recreation area at the Lake Lynn Hydroelectric Project provides a tailrace fishing platform to enhance public utilization of the Cheat River below the dam for fishing. Access to this platform is provided from Lake Lynn Road along the river. A gravel parking area at the tailrace recreation area can accommodate approximately 20 vehicles, and includes two ADA accessible spaces. Both the fishing platform and parking area are illuminated. An ADA compliant pedestrian ramp connects the parking area with the fishing platform. The fishing platform can accommodate approximately 20 fishermen and has handrails constructed with barrier free cutouts to provide access for the disabled. The platform is cantilevered over the water to reduce fish abrasion against the wall during landing. An existing roadway provides easy foot access from the parking lot to the riverbank. A portable ADA toilet has been provided for the public's convenience. To enhance public safety, visual and audible alarms are present to provide sufficient notification of flow increases from the hydroelectric facility and warn the public to exit the water. In addition to the fishing platform, eight rock pile structures were installed in September 2000 in order to provide fish habitat in the first river mile downstream of the tailrace.

### 2.4 Wildlife Habitat and Nature Viewing Areas (NVAs)

Four significant portions of the project lands have been designated as NVAs. These areas are being preserved for undeveloped use and there are no plans to develop these areas in the future. These areas include the following:

- 40 acres between Morgan and Manning Run embayments
- 140-acre Cheat Haven Peninsula
- 12-acre parcel across the lake from Cheat Haven- accessible by boat
- 25 acres Towers Run

The 140-acre Cheat Haven Peninsula area was designed to allow hikers to leave the hiking/biking trail and hike along the 1-mile trail through the woods. A bike rack and picnic table is available at the end of the trail for use by park visitors. In 2012 a three-sided shelter was constructed at the end of the trail. The designated walking trail aids in reducing habitat destruction in the nature viewing area.

The Towers Run area was identified in the original Recreation Plan as a hunting area. On October 7, 1997, FERC issued an "*Order Approving Hunting Area Management Plan and Amending Recreation and Land Management Plan*" at the request of the former owner, AE, and local landowners. In that order, it was agreed by FERC and West Virginia Division of Natural Resources (WVDNR) that the Towers Run area is not conducive to hunting because of the number of property owners and the small size of the parcel. Therefore, hunting continues to be prohibited in this area.

## 2.5 Privilege Permit Areas

There are 217 privilege permits issued to lease plots at various locations around Cheat Lake. Each permit holder is responsible for the installation and maintenance of any boat docks and the property; however, permits must be approved by LLG prior to any improvements being conducted at a privilege permit site. Currently, LLG issues permits to property owners around the lake, if requested, for the parcel of land in front of their properties and on a limited basis to individuals that had requested a space on the lake for installing a dock for the purpose of lake access.

Currently there are twenty seven (27) privilege permits or licenses issued for leased plots, sometimes referred to as campsites. Nineteen (19) of these campsites are located along the Trail, one of which has been dedicated to the Cheat Lake Environment and Recreation Association (CLEAR). The CLEAR privilege permit is for any area along the South Trail. In 2011, First Energy advised that overnight camping is no longer permitted on the campsite plots. During the comment period for the 2012 Recreation Plan Update, CLEAR requested the construction of an observation deck along the southern section of the trail. LLG and CLEAR have been unable to come to an agreement for the location of the trail. Therefore, CLEAR's privilege permit has been upgraded to allow CLEAR to accommodate better access to the existing dock and to rebuild the boat dock, which will be larger and could take the place of an observation deck. LLG is funding a portion of this CLEAR project. It has been determined that new privilege permits or licenses will no longer be issued for leased plots or campsites. In the Order Approving the 2012 Recreation Plan Update dated October 9, 2012, FERC stated that licensee's plans to not issue any new privilege permits were reasonable.

## 2.6 Public Boat Launching Facility

A free boat launching ramp and associated parking area are provided for public use on Cheat Lake at Sunset Beach Marina. The parking area at Sunset Beach Marina is able to accommodate up to 60 boat trailers at one time. This launch facility is available throughout the year when lake level is above 865' National Geodetic Vertical Datum (NGVD). During the winter months, LLG can draw the lake down to 857' NGVD in accordance with the existing license. This drawdown typically only occurs during high inflow river conditions upstream that permits LLG to operate the Lake Lynn Hydroelectric Project. During the recreation season, current lake level conditions are reported on the USGS website ([http://waterdata.usgs.gov/wv/nwis/uv?site\\_no=03071590](http://waterdata.usgs.gov/wv/nwis/uv?site_no=03071590)) and available to the public.

During the recreation season, the lake level is maintained such that navigation is not affected by LLG's operation. During the winter months, if the lake level is drawn down to the 857' NGVD elevation for power generation, there could be an issue with navigation in the lake due to shallow water near the Ices Ferry Bridge, embayments, and possibly several other locations around the lake. However, most boaters utilizing the lake in the winter are typically familiar with these conditions and would avoid shallow areas. A winter boat launch is available for use from November 1 through March 31 at Cheat Lake Park for those periods when the lake level is below 865' NGVD. LLG maintains that this boat launch remains available only during winter months in order to preserve the aesthetics of the park and the lack of adequate parking for boat

trailers during summer months.

## **2.7 Maintenance of Lake Levels**

In accordance with the FERC License Article 403, LLG maintains the surface elevation at the following levels throughout the year:

- During the recreational season from May 1 through October 31, the surface elevation is maintained between 868' and 870' NGVD.
- During the off-season from November 1 through March 31, the surface elevation is maintained between 857' and 870' NGVD.
- For the month of April, surface elevation is maintained between 863' and 870' NGVD.

The minimum and maximum surface elevations may be temporarily modified if required by operating emergencies and for short periods for project maintenance. LLG must provide adequate notification to the FERC and WVDNR within 10 days if the lake level is modified from the above requirements. Fluctuating lake levels during April will be minimized to the extent possible. The purpose for lowering the lake to the 863' elevation is to help lessen the impacts to the habitat downstream during spring flooding and for the purpose of utilizing the available water resources. In addition to notifying the agencies, LLG also provides notification to the marinas if the lake is lowered below 868' during the recreational season and to the Albert Gallatin Water Company if the lake is lowered to 861' at any time during the year.

## **2.8 Minimum Flows to the Lower Cheat River**

In accordance with the FERC License Article 404, LLG releases a minimum flow of 212 cubic feet per second (cfs), or inflow to the Project reservoir, whichever is less. During extremely low flow periods, LLG provides an absolute minimum flow of 100 cfs. When the lake level is decreasing, LLG cannot reduce the minimum flow by increments greater than 25 cfs per hour in order to achieve a stable reservoir water level.

The minimum flow release can be temporarily modified if required by operating emergencies beyond the control of LLG and for short periods upon agreement of the West Virginia Department of Environmental Protection (WVDEP). If modified, LLG must notify the FERC and the WVDEP within 10 days.

## **2.9 Security and Maintenance**

LLG contracts a private security firm to provide security at the facility. Park security personnel are on-duty at the facility during the recreation season for 16 hours a day and seven days a week. During the winter months, security is reduced to 10 hours a day due to the reduced recreation usage. Typical maintenance at the facilities is provided by a contract with Action Facilities Management, which handles the day to day cleaning, mowing, and minor repairs from April 1 to September 30. Security personnel handle minor cleaning and maintenance tasks (e.g. trash pick-up) during the off-season. If major construction repairs are required, LLG contracts this work with one of its approved contractors.



### 3.0 TRIENNIAL RECREATION PLAN UPDATE

The FERC license for operation of the Lake Lynn Hydroelectric Project requires LLG to file an update to the recreation plan every three years. The update is prepared based on an evaluation of facility usage data and in consultation with numerous agencies and stakeholder groups. The following sections discuss each of the areas that LLG is required to address in the update.

#### 3.1 Recreational Use Study Methodology

Recreation use data for the Project recreation facilities was collected during the 2012, 2013, and 2014 recreation seasons. Recreation usage data was collected during weekday, non-peak weekends, and peak weekends by park security and Lake Lynn Project staff. With the exception of the tailrace fishing area, recreation usage data was collected daily at the Project recreation facilities; once during morning and early afternoon hours (approximately 8 am – 2 pm) and once between afternoon and early evening hours (approximately 2 pm – 8 pm). At the tailrace fishing area, Lake Lynn Project staff collected recreation usage data twice daily including during morning and evening hours, coinciding with the times when peak recreation usage occurs at this specific facility. All data was collected on datasheets specific to the area of the survey. During all recreation surveys, no adjustments were made to compensate for visitors that arrive or leave between the data collection times. Additionally, counts consisted only of the number of people who could actually be seen at the time of the survey, and did not include assumed recreation usage or the number of parked cars. However, any recreation usage not observed during the survey or observations of unusual levels of use (e.g. large groups that visited at some other time of day, special events, or inclement weather conditions) were recorded in the comments section of the datasheets.

#### 3.2 Recreation Data Results and Adequacy of Facilities

A summary of the recreation usage data collected at the Lake Lynn Hydroelectric Project recreation facilities is provided in Attachment II. The areas surveyed include Cheat Lake Park area, the tailrace recreation area, and the Sunset Beach Marina (Sunset Beach Marina data was collected in 2014 only). Over the past three years, recreation usage data indicates an increasing trend in total recreation usage at the Project recreation facilities. It is estimated that a total of 37,565 visitors used the Cheat Lake Park and tailrace recreation area facilities in 2014, 34,004 in 2013, and 22,845 in 2012. If the 2014 data for the Sunset Beach Marina is included, there is a yearly recreation usage of 51,968 at all the surveyed areas (Table 1; Figure 2). Total recreational usage was highest during the 2014 recreation season and lowest during the 2012 recreation season. Compared to the last triennial Recreation Plan Update that included use for 2009-2011, recreation usage in the 2012-2014 period showed an overall increase. The average recreational usage during the 2012-2014 period was 35,972, compared to 32,759, the average usage during the 2009-2011 period (Table 1). Total non-peak weekend usage ranges from 10,230 to 23,251, was highest in the 2014 recreation season, and had an average value of 16,942 (Table 1; Figure 2). Total peak weekend usage ranged from 1,160 to 8,210 and was highest in the 2014 recreation season (Table 1; Figure 2). Average total peak weekend usage was 3,658, higher than the previous period's average of 3,243.

The areas with the highest recreation usage in the Cheat Lake area include the hiking/biking trail, fishing from boats in Cheat Lake, and the playground area. The area with the highest usage in the tailrace fishing area was fishing from the banks or in the water. Generally, the recreation facilities during 2012-2014 with the lowest usage continued to be the picnic area at the Cheat Lake Park and fishing from boats in the tailrace area. Usage of the hiking/biking trail for all recreation days ranged from 12,738 to 20,538 and was highest in 2014 and lowest in 2012 (Table 2, Figure 3). The average value for usage of the hiking/biking trail on all recreation days was 17,597. Fishing from boats at Cheat Lake on all recreation days had an average usage of 9,221. Usage of the playground on all recreation days had an average usage of 1,501 (Table 2, Figure 5). Sunset Beach Marina usage on all recreation days in 2014 was 14,403, with 2,230 visitors on peak weekends and 4,990 visitors on non-peak weekends (Table 1, Figure 4).

Recreation usage of the entire tailrace fishing area (not including parking) in the 2012-2014 period increased from the last triennial Recreation Plan Update (Figure 5), although it showed a steady decrease from 2012 to 2014. Usage for 2012-2014 in the Tailrace Fishing area for total recreation days ranged from 754 to 1,654, with the lowest usage in 2014. Usage during non-peak weekends ranged from 316 to 665 and was highest in 2012 and lowest in 2014. Usage during peak weekends ranged from 36 to 76 and was highest during 2013 and lowest during 2014 (Table 1, Figure 5).

All of the Lake Lynn Hydroelectric Project recreation facilities continue to be used at less than 50 percent capacity for off-peak weekend days. The facilities that have the highest percent usage based on their capacity are the boat launches and ramps, both with 46% of their capacity currently utilized.

Based on the current review of the facilities and usage numbers generated in 2012, 2013 and 2014, the existing facilities as operated are adequate to meet the current demonstrated demand for recreational use at the Project and comply with the Recreation and Land Management Plan approved by FERC on June 26, 1995.

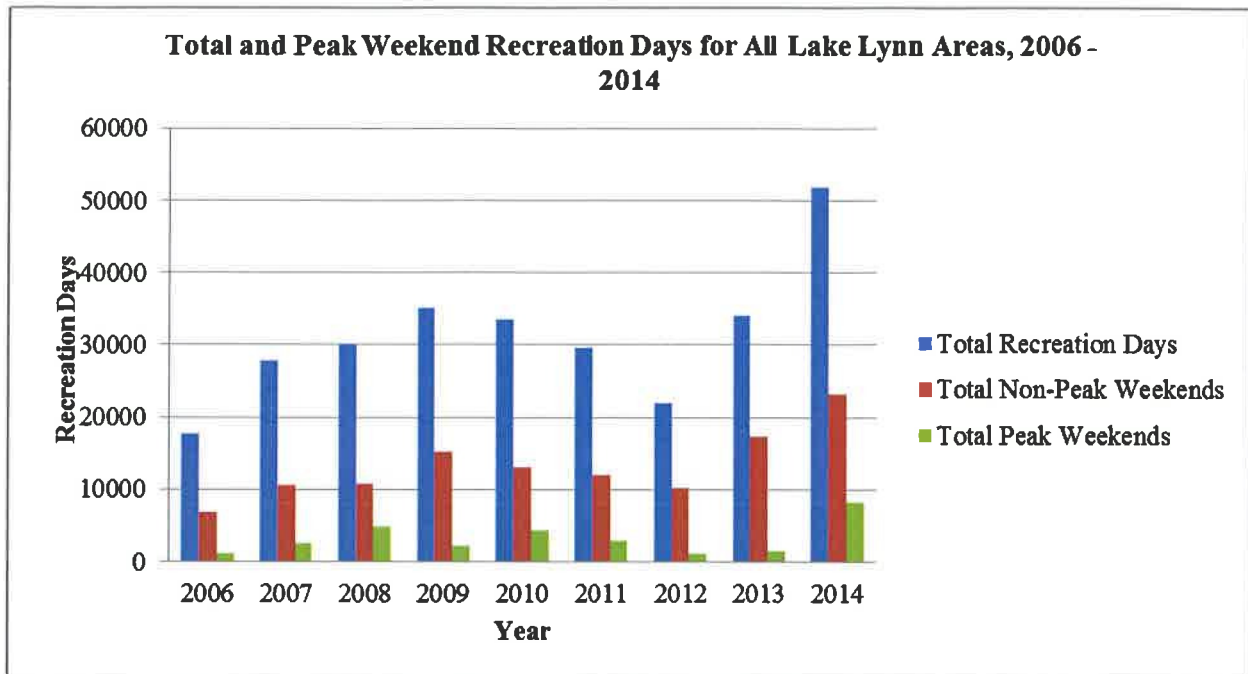


Figure 2. Total and peak weekend recreation days for all Lake Lynn areas for 2006 through 2014.

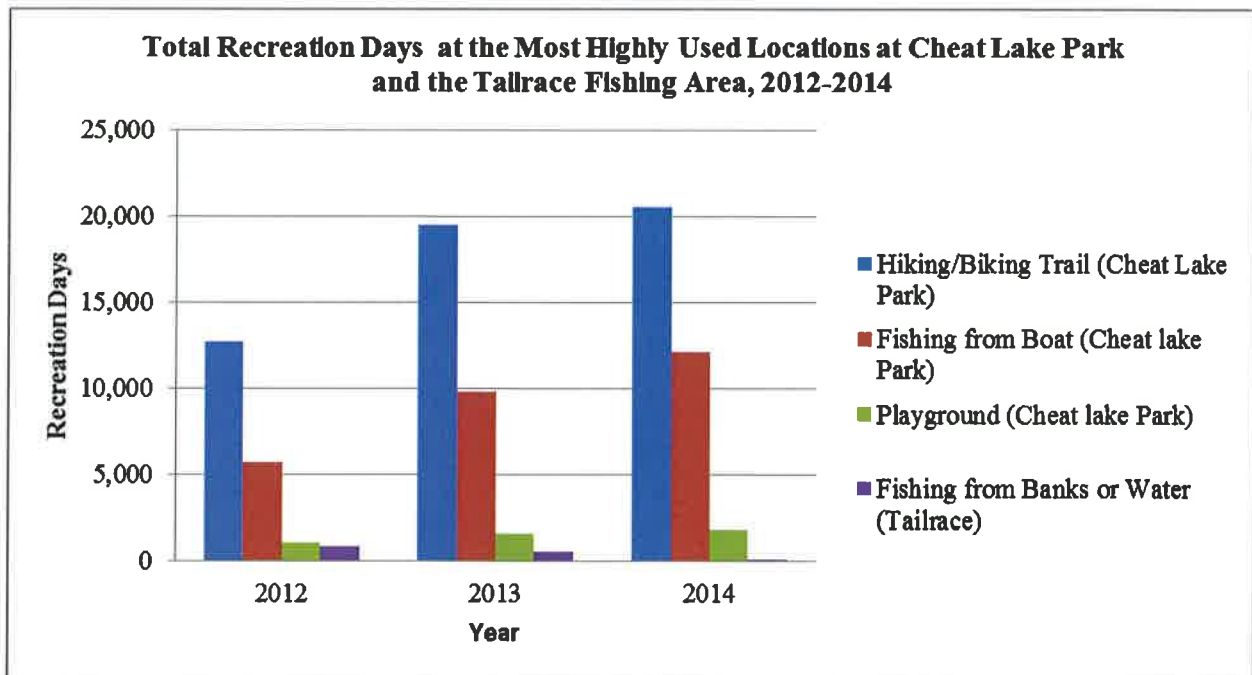


Figure 3. Total recreation days recorded at the most highly used locations at Cheat Lake Park and the Tailrace Fishing Area between 2012 and 2014.



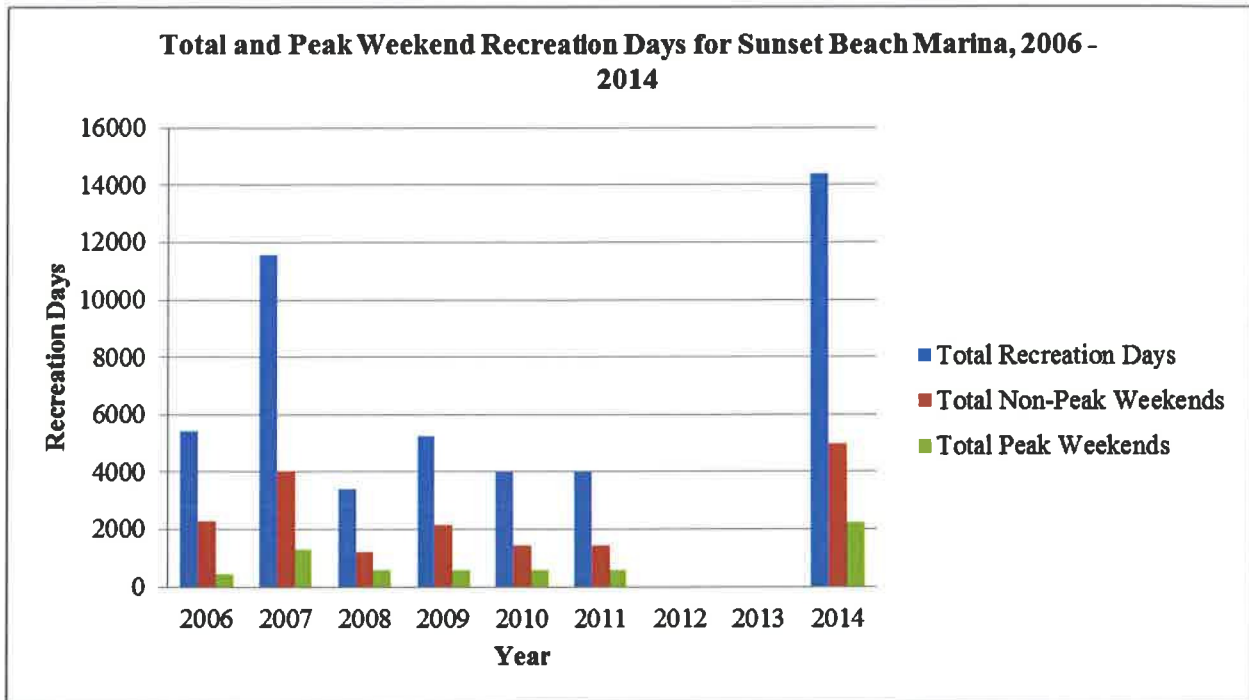


Figure 4. Total and peak weekend recreation days recorded at all sites of the Sunset Beach Marina for the years that data was collected between 2006 and 2014.

*Note: Data was not collected at Sunset Beach Marina in 2012 and 2013.*

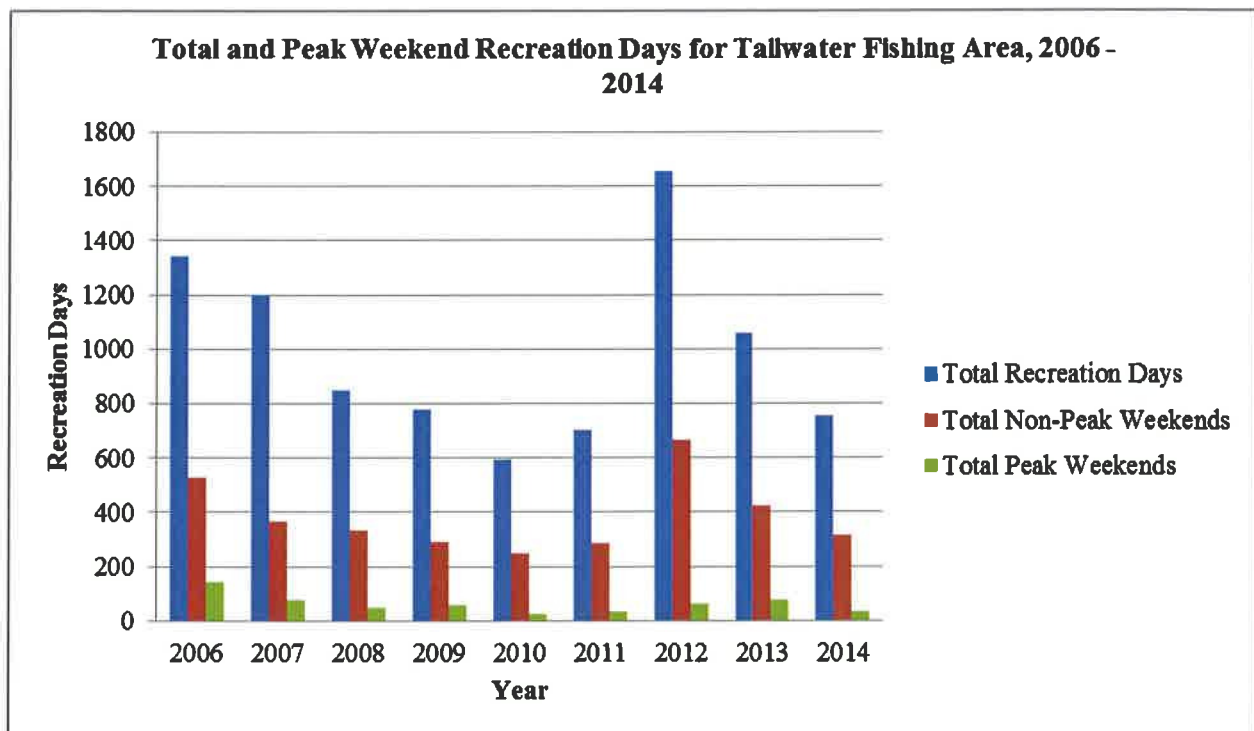


Figure 5. Total and peak weekend recreation days recorded at all sites of the tailrace fishing area for 2006 through 2014.

**TABLE 1. VISITORS AT LAKE LYNN HYDROELECTRIC PROJECT DURING THE 2012-2014 PERIOD**

<b>USAGE TYPE</b>	<b>2012</b>	<b>2013</b>	<b>2014</b>	<b>AVERAGE</b>	<b>TOTAL</b>
<b>I. CHEAT LAKE PARK</b>					
NON PEAK WEEKEND	9,914	16,890	17,945	14,916	44,749
PEAK WEEKEND	1,124	1,522	3,273	1,973	5,919
TOTAL VISITORS ALL DAYS	21,191	32,945	36,811	30,316	90,947
<b>II. TAILRACE FISHING AREA</b>					
NON PEAK WEEKEND	665	424	316	468	1,405
PEAK WEEKEND	62	76	36	58	174
TOTAL VISITORS ALL DAYS	1,654	1,059	754	1,156	3,467
<b>III. SUNSET BEACH MARINA</b>					
NON PEAK WEEKEND	N/A	N/A	4,990	N/A	4,990
PEAK WEEKEND	N/A	N/A	2,230	N/A	2,230
TOTAL VISITORS ALL DAYS	N/A	N/A	14,403	N/A	14,403
<b>ALL SITES</b>					
NON PEAK WEEKEND	10,230	17,345	23,251	16,942	50,826
PEAK WEEKEND	1,160	1,604	8,210	3,658	10,974
TOTAL VISITORS ALL DAYS	21,945	34,004	51,968	35,972	107,917

N/A = Not Applicable: Data was not collected during 2012-2013 at Sunset Beach Marina.

**TABLE 2. LAKE LYNN HYDROELECTRIC PROJECT: VISITORS AT MOST POPULAR SITES ON ALL RECREATION DAYS DURING THE 2012-2014 PERIOD**

<b>SITE</b>	<b>2012</b>	<b>2013</b>	<b>2014</b>	<b>AVERAGE</b>
<b>I. CHEAT LAKE PARK</b>				
1. HIKING/BIKING TRAIL	12,738	19,515	20,538	17,597
2. FISHING FROM BOATS	5,715	9,827	12,122	9,221
3. PLAYGROUND	1,090	1,595	1,819	1,501
<b>II. TAILRACE FISHING AREA</b>				
1. FISHING FROM BANK/WATER	831	514	124	490

### **3.3 Proposed Changes**

As discussed in Section 3.2, the recreational facilities provided are meeting the demonstrated recreation demand for the general use for this area. Based on an evaluation of the usage figures, the facilities are adequate for non-peak period demand. LLG will continue to monitor recreation usage to determine if any changes are warranted; however, at this time, LLG does not propose any changes to the type or operation of the existing recreation facilities or any new recreation facilities in this Recreation Plan Update.

### **3.4 Agency Consultation/Public Meeting**

As required by the FERC License, LLG has and will continue to meet and consult with appropriate agencies regarding recreation usage of the facilities. As part of this Recreation Plan Update, LLG undertook the following steps to solicit input:

- Prepared and distributed a draft of the 2015 Recreation Plan Update for comment
- Provided a copy of the draft Recreation Plan Update to and offered/requested formal consultation with the Department of Interior (DOI), WVDNR, and the Pennsylvania Fish and Boat Commission (PFBC).

After distribution of the draft 2015 Recreation Plan Update, LLG will conduct a public meeting at the Cheat Lake Fire Hall on February 19, 2015. A copy of the meeting minutes will be provided in the final 2015 Recreation Plan Update (Attachment III). All comments received and LLG's response to these comments concerning the Recreation Plan Update will be provided in the final 2015 Recreation Plan Update (Attachment IV).

### **3.5 Project Specific Issues per Article 417**

Article 417 of the FERC License requires that the recreation plan update consider Project-specific issues. FERC's Order Approving the 2012 Recreation Plan Update dated October 9, 2012 (Attachment I) describes issues and conclusions that need to be addressed as part of this 2015 update, described below.

#### **3.5.1 Trail Signs and Map**

In response to comments received at the April 17, 2012 public meeting, the previous licensee for the Lake Lynn Project, AE, agreed in the 2012 Recreation Plan Update to update all trail signs, maps, and the website to reflect changes to recreation facilities at Cheat Lake Park. LLG updated all trail signs and maps in 2014. LLG no longer maintains the website for Cheat Lake Park.

In addition, AE agreed in the 2012 Recreation Plan Update to request permission in 2012 from the West Virginia Department of Transportation (WVDOT) for installation of a sign advertising the park at the intersection of Morgan's Run Road and West Virginia Route 857. In the Order



Approving the 2012 Recreation Plan Update dated October 9, 2012, FERC stated that these actions were reasonable. At this time, the sign has not been installed, however, LLG plans to complete this in 2015.

### **3.5.2 Recreation Trails, Safety and Security**

During 2009 and 2012 Recreation Plan Updates, public commenters requested that a connector trail be developed from the existing Cheat Lake Trail to the Sheepskin Trail. Currently, the planned extension of the Sheepskin Trail to the Cheat Lake Trail has not been constructed; however, LLG maintains that, if and when, the Sheepskin Trail is constructed to the Project, LLG will request approval from FERC to provide access from the Lake Lynn/Bunker Hill Road to the Cheat Lake Trail. In the Order Approving the 2012 Recreation Plan Update dated October 9, 2012, FERC stated that the plan to link the Cheat Lake Trail to the Sheepskin Trail would be in the public interest.

The 2009 Recreation Plan Update reported that five lake observation platforms in the hiking/biking trail were removed due to safety concerns arising from vandalism and improper use. During the public review of the 2012 Recreation Plan Update, CLEAR requested an observation deck at the end of trail where visitors can walk out to observe the lake. AE responded that the reservoir level observation deck structures have had issues in the past with respect to access from the southern section of the Cheat Lake Trail and shoreline stability. AE agreed to work with CLEAR to determine if a mutually agreeable area for an observation deck structure could be identified along the southern section of the Cheat Lake Trail. If such an area could be identified, AE agreed to work with CLEAR to determine the type of observation deck structure that would be built. To date, LLG and CLEAR agreed to upgrade CLEAR's privilege permit to allow better access to the existing dock and for the rebuilding of the existing dock. The new dock will be larger and could take the place of the observation platform. This new dock would be made available for public use. LLG is providing a portion of the funding for the project.

### **3.5.3 Boating and Navigation**

A free boat launching ramp and associated parking area are provided for public use on Cheat Lake at Sunset Beach Marina. This launch facility is available throughout the year when lake level is above 865' National Geodetic Vertical Datum (NGVD). During the recreation season, the lake level is maintained such that navigation is not affected by LLG's operation. During the winter months, if the lake level is drawn down to the 857' NGVD elevation for power generation, there could be an issue with navigation in the lake due to shallow water near the Ices Ferry Bridge, embayments, and possibly several other locations around the lake. However, most boaters utilizing the lake in the winter are typically familiar with these conditions and would avoid shallow areas. A winter boat launch is available for use from November 1 through March 31 at Cheat Lake Park for those periods when the lake level is below 865' NGVD. LLG maintains that this boat launch remains available only during winter months in order to preserve the aesthetics of the park and the lack of adequate parking for boat trailers during summer months.

### 3.5.4 Swimming

Pursuant to the FERC’s February 12, 2007 response to the 2006 Recreation Plan Update and the March 31, 2008 FERC “*Order Amending the Recreation Plan*”, swimming had not been permitted in Cheat Lake. However, in response to public requests during the 2009 Recreation Plan Update and following “Amendment to Recreation Plan License Article 471”, swimming is now permitted in the lake under a “swim at your own risk” policy. In response to public comments, in April 2010, a “swim at your own risk” area was constructed near the public access docks (Figure 1). Additionally, two picnic tables were placed in the swimming area for use by park visitors. In response to comments received during the April 17, 2012 public meeting, additional picnic tables were placed in the designated swim area. Certain areas remain under a “No Swimming” designation (Figure 1).



Picture 2. Developed “Swim at Your Own Risk” Area

### 3.5.5 Camping

In the original Recreation Plan, there was a proposal to construct 10 primitive campsites behind the day-use boat docks. After further evaluation, the primitive campsites were not constructed because of concerns with individuals possibly spending up to 5 continuous days in the Park areas. In addition to security issues, the possibility of fires in the area, aesthetics, and the possible use of this area for local parties were concerns. In an effort to maintain a safe and aesthetic environment at the park, LLG elected not to develop the campsites and is not recommending any changes in this recreation plan update. The wooded area set aside for this purpose is used as a nature viewing area during the recreational season.

### 3.5.6 Other

In the Order Approving the 2012 Recreation Plan Update dated October 9, 2012, FERC stated that the Project licensee and CLEAR have worked together to bring recreational improvements to the

Project area that were identified in the 2009 Recreation Plan Update. LLG will continue to work with CLEAR and Lake Lynn visitors to identify and address necessary recreational improvements and issues as they arise.

#### 4.0 SUMMARY/CONCLUSIONS

During the 2012-2014 period, LLG conducted recreation surveys at Cheat Lake Park, the tailrace recreation area, and the Sunset Beach Marina to estimate utilization of the recreation facilities provided at the Lake Lynn Hydroelectric Project. Results of the recreation surveys from the past three years indicate annual use of the recreation facilities at the Lake Lynn Hydroelectric Project ranged from 21,945 to 51,968 recreation days. Compared to the last triennial Recreation Plan Update for 2010-2012, recreation usage in the 2012-2014 period showed an overall increase. The areas with the highest recreation usage in the Cheat Lake area include the hiking/biking trail, fishing from boats in Cheat Lake, and the playground area. Recreation usage of the entire tailrace fishing area in the 2012-2014 period increased from the last triennial Recreation Plan Update. Overall, all of the Project recreation facilities continue to be used at less than 50 percent capacity for off-peak weekend days. Based on review of recreation facility usage numbers generated in 2012, 2013 and 2014, the existing facilities as operated are adequate to meet the current demonstrated recreation demand for recreational use at the Project and comply with the Recreation and Land Management Plan for the foreseeable future approved by FERC on June 26, 1995.

In response to public requests during the 2012 Recreation Plan Update, an additional four picnic tables were placed in the swimming beach area. In addition, all trail signs and maps were updated and replaced to reflect the changes to recreation facilities at Cheat Lake Park. LLG plans to request permission from the WVDOT for installation of a sign advertising the park at the intersection of Morgan's Run Road and WV Route 857 in 2015.

LLG and CLEAR agreed to upgrade CLEAR's privilege permit. The upgrade will allow better access to the existing dock and for the reconstruction of the existing dock. The new dock will be larger and could take place of the observation platform, which was requested during the review of the 2012 Recreation Plan Update. The new dock would be available for public use. LLG is providing funding for a portion of the project.

In 2012, the public requested that a connector trail be provided from the existing Cheat Lake Trail to the Sheepskin Trail. Currently the Sheepskin Trail extension to Lake Lynn Hydroelectric Project has not been constructed. If and when the Sheepskin Trail is constructed near the Project, LLG will request approval from FERC and would work with trail developers to provide access from the Lake Lynn/Bunker Hill Road to the Cheat Lake Trail.

**ATTACHMENT I**

ORDER APPROVING RECREATION PLAN UPDATE  
PURSUANT TO ARTICLE 417  
ISSUED OCTOBER 9, 2012

20121009 0013 FERC FILE (ORIGINAL) 10/09/2012

141 FERC ¶ 62,023  
UNITED STATES OF AMERICA  
FEDERAL ENERGY REGULATORY COMMISSION

Allegheny Energy Supply Company

Project No. 2459-012

ORDER APPROVING RECREATION PLAN UPDATE  
PURSUANT TO ARTICLE 417

(Issued October 9, 2012)

1. On June 1, 2012, Allegheny Energy Supply Company (AESC or licensee) filed a recreation plan update (plan update or RPU) pursuant to article 417 of the license for the Lake Lynn Hydroelectric Project (FERC No. 2459).<sup>1</sup> The RPU proposes some minor changes to the project recreation plan. The project is located on the Cheat River, in Monongalia County, West Virginia, and Fayette County, Pennsylvania. There are no federal lands within the project.

BACKGROUND

2. Article 417, as amended, requires AESC to file a plan update with the Commission every three years following issuance of the license.<sup>2</sup> As part of the updating process, the licensee is to monitor recreation use to determine whether the project's existing recreation facilities are meeting current needs. Monitoring activities, at a minimum, are to include the collection of annual recreational use data. The plan updates must be prepared in consultation with the U.S. Department of the Interior, West Virginia Division of Natural Resources, Pennsylvania Fish and Boat Commission, Monongalia County, local communities, law enforcement, residents, local and regional interest groups, and other agencies having land management or planning/zoning authority in the area. As a result of the last triennial RPU filed on April 1, 2009, the recreation plan was amended by order issued May 18, 2010.<sup>3</sup>

3. Each triennial plan update is to include: (1) annual recreational use figures; (2) a discussion of the adequacy of the licensee's recreation facilities at the project to meet recreation demand; (3) a description of the methodology used to collect all recreational

---

<sup>1</sup> December 27, 1994 Order Issuing New License (69 FERC ¶ 62,253).

<sup>2</sup> Article 417 was amended by ordering paragraph (G) of Order Modifying and Approving Recreation and Land Management Plan, issued April 11, 1997 (79 FERC ¶ 62,017).

<sup>3</sup> Order Amending Recreation Plan (131 FERC ¶ 62,128).



use data; (4) if there is a need for additional facilities, a recreation plan proposed by the licensee to accommodate recreation needs in the project area; (5) documentation of agency consultation and agency comments on the update after it has been prepared and provided to the agencies; (6) consideration of the following project-specific issues: (a) safety and security; (b) navigational problems such as shallow water or heavy boat traffic; (c) swimming use, considering such issues as demand for swimming, commonly used sites, any problem areas, and the advantages and disadvantages of establishing permanent swimming sites;<sup>4</sup> (d) user demand patterns for boat launching and other activities at Sunset Beach, Area 26, and other alternate boat launch site locations;<sup>5</sup> and (e) the viability of continuing the primitive camping and privileged permit lease lot programs, including modifications to address demand, user conflicts, or other issues;<sup>6</sup> and (7) specific descriptions of how the agencies' comments are accommodated by the plan update.

#### RECREATION PLAN UPDATE

4. Since the 2009 plan update, AESC conducted a one year trial assessing the year-round use of the southern section of the Cheat Lake Trail during daylight hours. Following this trial period, AESC decided to allow the southern section of the Cheat Lake Trail to remain open for year-round use during daylight hours. However, due to safety concerns, the trail may be closed temporarily if hazardous site conditions exist. Pursuant to the recommendations in the 2010 order amending the recreation plan, AESC now informs hikers of trail closures by posting signs on the Morgan's Run Bridge and posting any trail closures on the park website.

5. As approved in the 2010 order amending the recreation plan, and in response to public requests received during the 2009 RPU development, AESC now permits swimming at Cheat Lake Park under a "swim at your own risk" policy. Additionally, AESC constructed a designated "swim at your own risk" beach area in April 2010. In response to recent comments from the public meeting, AESC will increase the number of picnic tables in the designated beach area. In 2010, AESC constructed a nature trail nearly one mile in length through the Cheat Haven Nature Viewing Area and provided a

---

<sup>4</sup> Pursuant to the Commission's February 12, 2007 letter responding to the licensee's 2006 recreation plan update, future plan updates are not required to evaluate swimming.

<sup>5</sup> If parking or capacity problems at Sunset Beach are not easily resolved, the licensee is to evaluate development of alternate boat launch sites.

<sup>6</sup> Order Amending Recreation Plan, issued March 31, 2008 (122 FERC ¶ 62,267), removed the requirement to provide primitive camping at Area 18 due to potential conflicts with nearby residents, anglers, and trail users, but requires the licensee to continue evaluating the viability of primitive camping in this area in future plan updates.

bike rack and picnic table at the end of the trail for use by park visitors. AESC will build a three-sided shelter at the end of the trail in 2012 as approved in the 2010 order.

6. The plan update includes recreation usage data and an evaluation of the adequacy of existing recreation areas. From 2009 to 2011, AESC conducted recreation counts at Cheat Lake Park, the tailrace recreation area, and the Sunset Beach Marina to estimate utilization of the recreation facilities provided at the Lake Lynn Hydroelectric Project. The licensee's security personnel conducted head counts around peak use times to obtain public use data.

7. Results of the recreation surveys from the past three years indicated annual use of the recreation facilities ranged from 29,242 to 35,600 recreation days. Overall recreation use increased compared to the last triennial recreation plan update for 2006-2008. The areas with the highest recreation usage include the hiking/biking trail, the boat launch at Sunset Beach Marina, fishing from boats in Cheat Lake, and the playground. Non-peak weekend recreation use of the tailrace fishing area decreased from 409 in 2006-2008 to 273 in 2009-2011. Most of the recreation facilities continue to be used at less than 50 percent capacity on off-peak weekend days. While use of the playground area exceeded capacity in some cases, this finding resulted from counting both persons utilizing the playground and bystanders adjacent to the playground area. Reporting methods in future updates should be modified to differentiate the number of people using the playground equipment and those using support facilities (i.e. benches or picnic tables provided for those supervising the children). Based on review of recreation facility usage numbers generated in 2009, 2010, and 2011 AESC believes that the existing facilities, as operated, are adequate to meet the current demonstrated demand for recreational use at the project and comply with the Recreation and Land Management Plan filed on June 26, 1995 and approved on April 11, 1997.<sup>7</sup>

8. In the 2009 RPU, AESC indicated that five lake observation platforms along the hiking/biking trail were removed due to safety concerns arising from vandalism and improper use. Several of the stairways leading to the lake observation platforms were rendered unsafe due to shoreline shifting and were also removed. Since the removal of these amenities, AESC has not received any complaints from the public. To compensate for the removal of these platforms, AESC initially agreed to install one new stationary access dock at the southern end of the hiking/biking trail, however, because of hillside stabilization issues at the location, the dock was not installed. Instead an existing dock, approximately half a mile north of this location, was assigned to the Cheat Lake Environment and Recreation Association (CLEAR), at no annual cost, to be used for public access to the trail. CLEAR is a local association of citizens interested in the

---

<sup>7</sup> Order Modifying and Approving Recreation and Land Management Plan (79 FERC ¶ 62,017)

environmental and recreational management of Cheat Lake. CLEAR will be responsible for maintenance of the dock structure which will be open for public use.

9. There are 214 privilege permits at various locations around the Cheat Lake shoreline that allow holders to install and maintain boat docks. Docks and any other improvements must be approved by AESC prior to construction. There are also 37 privilege permits or licenses issued for leased plots, sometimes referred to as campsites. These leased campsites pre-date the recreation plan and have been grandfathered into the current plan (27 campsites are located along the southern section of the Cheat Lake Trail). Because of the lack of adequate sanitation facilities and aesthetic issues resulting from privilege permit campsites, AESC has determined that it will no longer issue new permits for campsites. AESC will continue to provide privilege permits for docks to property owners along the lake shoreline.

#### CONSULTATION

10. On March 29, 2012, AESC provided a draft copy of the 2012 plan update to the required agencies listed in article 417, and asked for comments within 45 days. None of these agencies provided comments on the plan update.

11. After distribution of the 2012 draft plan update to the agencies, a public meeting was held on April 17, 2012, to discuss public comments and concerns. The licensee received comments from the public which are included in the RPU. The licensee also received written comments from CLEAR on the draft plan update. AESC's responses to these comments are included in the plan update. The following is a summary of these comments and AESC's responses.

12. Some of these comments, such as reservoir levels, speed limit signs on access road to the project, counting cars on the access road, and advertising of the park, are outside the scope of the plan update. Other comments included a request to have additional picnic tables placed on the designated swimming beach. AESC responded that additional picnic tables will be placed at the designated swimming beach area by the end of May 2012. CLEAR requested an observation deck at the end of the trail where visitors can walk out to observe the lake. AESC responded that the reservoir level observation deck structures have had issues in the past with respect to access from the southern section of the Cheat Lake Trail and shoreline stability. The licensee will work with CLEAR to determine if a mutually agreeable area for an observation deck structure can be identified along the southern section of the Cheat Lake Trail. If such an area is identified the licensee will again work with CLEAR to determine the type of observation deck structure that would be built.

13. A commenter requested to have the southern section of the Cheat Lake Trail open after dusk, to allow people to use it later into the day during the winter months. AESC

responded that after review with park security personnel they did not support this request. The facility is designed and was approved for day use only. The facility is in a remote area and there is no lighting on the southern section of the Cheat Lake Trail and there are no personnel on duty in the evening to monitor the area. In response to public comments requesting that AESC provide a connector trail from the existing Cheat Lake Trail to the Sheepskin Trail, the AESC maintains that if and when the Sheepskin Trail is constructed near the project, AESC, with approval from the Commission, will work with trail developers to provide access from Lake Lynn/Bunker Hill Road to the Cheat Lake Trail.

## DISCUSSION AND CONCLUSION

14. The licensee provided the required agencies the opportunity to comment on the plan update and these same agencies were provided a copy of the final plan update that was filed with the Commission on June 1, 2012. The licensee has worked to obtain community input on the RPU by holding a public meeting and asking for comments. The licensee has worked with CLEAR to develop and manage recreational facilities at the project.

15. In response to comments received at the April 17, 2012 public meeting, AESC has agreed to update all trail signs, maps, and the website to reflect changes to recreation facilities at Cheat Lake Park. Additionally, AESC has agreed to request permission in 2012 from the West Virginia Department of Transportation (WVDOT) for installation of a sign advertising the park at the intersection of Morgan's Run Road and West Virginia Route 857. The licensee's plans to update all trail signs, maps, and the website with current recreational facilities information, to request new signage from the WVDOT, and to not issue any new privilege permits for campsites are reasonable.

16. In regard to the request that the southern section of the Cheat Lake Trail be open after dusk, the trail is not designed for night time use. Opening the trail to night time use would be both a safety and a security concern. Once the sheepskin Trail is developed, the plan to link it to the Cheat Lake Trail would be in the public interest.

17. As requested during a public comment period, the licensee provided additional picnic tables at the designated swimming beach. Since a set number of tables were not included in the current recreation plan, this change would not require amending the plan. The licensee is working with CLEAR to determine if a mutually agreeable area for an observation deck structure can be identified along the southern section of the Cheat Lake Trail and the type of observation deck structure that might be built. This matter will be reported on in the next triennial update.

18. The recreational facilities currently provided are adequate for non-peak period demand for the project area. AESC will continue to monitor usage to determine if any

changes are warranted; however, at this time, no changes to the type, access and operation of facilities is proposed in this update and none will be required.

19. AESC and CLEAR have worked together to bring recreational improvements to the project area. The update documents the changes that have been made and it is anticipated that existing facilities will be able to accommodate recreation demand for the foreseeable future. The June 1, 2012 filing of the plan update meets the requirements of article 417, is in the public interest, and should be approved.

The Director orders:

(A) The recreation plan update for the Lake Lynn Hydroelectric Project (FERC No. 2459), filed on June 1, 2012, pursuant to article 417 of the license, is approved.

(B) This order constitutes final agency action. Any party may file a request for rehearing of this order within 30 days from the date of its issuance, as provided in section 313(a) of the FPA, 16 U.S.C. § 8251 (2006), and the Commission's regulations at 18 C.F.R. § 385.713 (2012). The filing of a request for rehearing does not operate as a stay of the effective date of this order, or of any other date specified in this order. The licensee's failure to file a request for rehearing shall constitute acceptance of this order.

Robert J. Fletcher  
Chief, Land Resources Branch  
Division of Hydropower  
Administration and Compliance



**ATTACHMENT II**

FACILITY USE DATA FOR  
CHEAT LAKE PARK, SUNSET BEACH MARINA, AND  
TAILRACE FISHING AREA

2012-2014

Lake Lynn Hydro Plant - Cheat Lake Park, Hiking/Biking Trail and Sunset Beach Marina  
NAES Corporation - 2014 Recreational Use Surveys  
Weekly Summary

Week Beginning	Picnic Area			Playground			Day Use Boat Docks			Cheat Lake Park Fishing (Bank)			Fishing (Platforms)			Fishing (Boats)			Cheat Lake Parking			Hikers/Bikers on Trail			Hiking/Biking Trail			Substation Parking			Sunset Beach Marina		
	Total per Week	Total Non Peak	Total Peak Weekend	Total per Week	Total Non Peak	Total Peak Weekend	Total per Week	Total Non Peak	Total Peak Weekend	Total per Week	Total Non Peak	Total Peak Weekend	Total per Week	Total Non Peak	Total Peak Weekend	Total per Week	Total Non Peak	Total Peak Weekend	Total per Week	Total Non Peak	Total Peak Weekend	Total per Week	Total Non Peak	Total Peak Weekend	Total per Week	Total Non Peak	Total Peak Weekend	Total per Week	Total Non Peak	Total Peak Weekend			
December 29, 2013	0	0	n/a	0	0	n/a	0	0	n/a	0	0	n/a	0	0	n/a	0	0	n/a	0	0	n/a	0	0	n/a	0	0	n/a	0	0	n/a			
January 5, 2014	0	0	n/a	0	0	n/a	0	0	n/a	0	0	n/a	0	0	n/a	0	0	n/a	0	0	n/a	0	0	n/a	0	0	n/a	0	0	n/a			
January 12, 2014	0	0	n/a	0	0	n/a	0	0	n/a	0	0	n/a	0	0	n/a	0	0	n/a	0	0	n/a	0	0	n/a	0	0	n/a	0	0	n/a			
January 19, 2014	0	0	n/a	0	0	n/a	0	0	n/a	0	0	n/a	0	0	n/a	0	0	n/a	0	0	n/a	0	0	n/a	0	0	n/a	0	0	n/a			
January 26, 2014	0	0	n/a	0	0	n/a	0	0	n/a	0	0	n/a	0	0	n/a	0	0	n/a	0	0	n/a	0	0	n/a	0	0	n/a	0	0	n/a			
February 2, 2014	0	0	n/a	0	0	n/a	0	0	n/a	0	0	n/a	0	0	n/a	0	0	n/a	0	0	n/a	0	0	n/a	0	0	n/a	0	0	n/a			
February 9, 2014	0	0	n/a	0	0	n/a	0	0	n/a	0	0	n/a	0	0	n/a	0	0	n/a	0	0	n/a	0	0	n/a	0	0	n/a	0	0	n/a			
February 16, 2014	0	0	n/a	0	0	n/a	0	0	n/a	0	0	n/a	0	0	n/a	0	0	n/a	0	0	n/a	0	0	n/a	0	0	n/a	0	0	n/a			
February 23, 2014	0	0	n/a	0	0	n/a	0	0	n/a	0	0	n/a	0	0	n/a	0	0	n/a	0	0	n/a	0	0	n/a	0	0	n/a	0	0	n/a			
March 2, 2014	0	0	n/a	0	0	n/a	0	0	n/a	0	0	n/a	0	0	n/a	0	0	n/a	0	0	n/a	0	0	n/a	0	0	n/a	0	0	n/a			
March 9, 2014	0	0	n/a	0	0	n/a	0	0	n/a	0	0	n/a	0	0	n/a	0	0	n/a	0	0	n/a	0	0	n/a	0	0	n/a	0	0	n/a			
March 16, 2014	0	0	n/a	0	0	n/a	0	0	n/a	0	0	n/a	0	0	n/a	0	0	n/a	0	0	n/a	0	0	n/a	0	0	n/a	0	0	n/a			
March 23, 2014	0	0	n/a	0	0	n/a	0	0	n/a	0	0	n/a	0	0	n/a	0	0	n/a	0	0	n/a	0	0	n/a	0	0	n/a	0	0	n/a			
March 30, 2014	0	0	n/a	0	0	n/a	0	0	n/a	0	0	n/a	0	0	n/a	0	0	n/a	0	0	n/a	0	0	n/a	0	0	n/a	0	0	n/a			
April 6, 2014	0	0	n/a	0	0	n/a	0	0	n/a	0	0	n/a	0	0	n/a	0	0	n/a	0	0	n/a	0	0	n/a	0	0	n/a	0	0	n/a			
April 13, 2014	0	0	n/a	0	0	n/a	0	0	n/a	0	0	n/a	0	0	n/a	0	0	n/a	0	0	n/a	0	0	n/a	0	0	n/a	0	0	n/a			
April 20, 2014	0	0	n/a	0	0	n/a	0	0	n/a	0	0	n/a	0	0	n/a	0	0	n/a	0	0	n/a	0	0	n/a	0	0	n/a	0	0	n/a			
April 27, 2014	0	0	n/a	0	0	n/a	0	0	n/a	0	0	n/a	0	0	n/a	0	0	n/a	0	0	n/a	0	0	n/a	0	0	n/a	0	0	n/a			
May 4, 2014	0	0	n/a	0	0	n/a	0	0	n/a	0	0	n/a	0	0	n/a	0	0	n/a	0	0	n/a	0	0	n/a	0	0	n/a	0	0	n/a			
May 11, 2014	0	0	n/a	0	0	n/a	0	0	n/a	0	0	n/a	0	0	n/a	0	0	n/a	0	0	n/a	0	0	n/a	0	0	n/a	0	0	n/a			
May 18, 2014	0	0	n/a	0	0	n/a	0	0	n/a	0	0	n/a	0	0	n/a	0	0	n/a	0	0	n/a	0	0	n/a	0	0	n/a	0	0	n/a			
May 25, 2014	0	0	n/a	0	0	n/a	0	0	n/a	0	0	n/a	0	0	n/a	0	0	n/a	0	0	n/a	0	0	n/a	0	0	n/a	0	0	n/a			
June 1, 2014	0	0	n/a	0	0	n/a	0	0	n/a	0	0	n/a	0	0	n/a	0	0	n/a	0	0	n/a	0	0	n/a	0	0	n/a	0	0	n/a			
June 8, 2014	0	0	n/a	0	0	n/a	0	0	n/a	0	0	n/a	0	0	n/a	0	0	n/a	0	0	n/a	0	0	n/a	0	0	n/a	0	0	n/a			
June 15, 2014	0	0	n/a	0	0	n/a	0	0	n/a	0	0	n/a	0	0	n/a	0	0	n/a	0	0	n/a	0	0	n/a	0	0	n/a	0	0	n/a			
June 22, 2014	0	0	n/a	0	0	n/a	0	0	n/a	0	0	n/a	0	0	n/a	0	0	n/a	0	0	n/a	0	0	n/a	0	0	n/a	0	0	n/a			
June 29, 2014	0	0	n/a	0	0	n/a	0	0	n/a	0	0	n/a	0	0	n/a	0	0	n/a	0	0	n/a	0	0	n/a	0	0	n/a	0	0	n/a			
July 6, 2014	0	0	n/a	0	0	n/a	0	0	n/a	0	0	n/a	0	0	n/a	0	0	n/a	0	0	n/a	0	0	n/a	0	0	n/a	0	0	n/a			
July 13, 2014	0	0	n/a	0	0	n/a	0	0	n/a	0	0	n/a	0	0	n/a	0	0	n/a	0	0	n/a	0	0	n/a	0	0	n/a	0	0	n/a			
July 20, 2014	0	0	n/a	0	0	n/a	0	0	n/a	0	0	n/a	0	0	n/a	0	0	n/a	0	0	n/a	0	0	n/a	0	0	n/a	0	0	n/a			
July 27, 2014	0	0	n/a	0	0	n/a	0	0	n/a	0	0	n/a	0	0	n/a	0	0	n/a	0	0	n/a	0	0	n/a	0	0	n/a	0	0	n/a			
August 3, 2014	0	0	n/a	0	0	n/a	0	0	n/a	0	0	n/a	0	0	n/a	0	0	n/a	0	0	n/a	0	0	n/a	0	0	n/a	0	0	n/a			
August 10, 2014	0	0	n/a	0	0	n/a	0	0	n/a	0	0	n/a	0	0	n/a	0	0	n/a	0	0	n/a	0	0	n/a	0	0	n/a	0	0	n/a			
August 17, 2014	0	0	n/a	0	0	n/a	0	0	n/a	0	0	n/a	0	0	n/a	0	0	n/a	0	0	n/a	0	0	n/a	0	0	n/a	0	0	n/a			
August 24, 2014	0	0	n/a	0	0	n/a	0	0	n/a	0	0	n/a	0	0	n/a	0	0	n/a	0	0	n/a	0	0	n/a	0	0	n/a	0	0	n/a			
August 31, 2014	0	0	n/a	0	0	n/a	0	0	n/a	0	0	n/a	0	0	n/a	0	0	n/a	0	0	n/a	0	0	n/a	0	0	n/a	0	0	n/a			
September 7, 2014	0	0	n/a	0	0	n/a	0	0	n/a	0	0	n/a	0	0	n/a	0	0	n/a	0	0	n/a	0	0	n/a	0	0	n/a	0	0	n/a			
September 14, 2014	0	0	n/a	0	0	n/a	0	0	n/a	0	0	n/a	0	0	n/a	0	0	n/a	0	0	n/a	0	0	n/a	0	0	n/a	0	0	n/a			
September 21, 2014	0	0	n/a	0	0	n/a	0	0	n/a	0	0	n/a	0	0	n/a	0	0	n/a	0	0	n/a	0	0	n/a	0	0	n/a	0	0	n/a			
September 28, 2014	0	0	n/a	0	0	n/a	0	0	n/a	0	0	n/a	0	0	n/a	0	0	n/a	0	0	n/a	0	0	n/a	0	0	n/a	0	0	n/a			
October 5, 2014	0	0	n/a	0	0	n/a	0	0	n/a	0	0	n/a	0	0	n/a	0	0	n/a	0	0	n/a	0	0	n/a	0	0	n/a	0	0	n/a			
October 12, 2014	0	0	n/a	0	0	n/a	0	0	n/a	0	0	n/a	0	0	n/a	0	0	n/a	0	0	n/a	0	0	n/a	0	0	n/a	0	0	n/a			
October 19, 2014	0	0	n/a	0	0	n/a	0	0	n/a	0	0	n/a	0	0	n/a	0	0	n/a	0	0	n/a	0	0	n/a	0	0	n/a	0	0	n/a			
October 26, 2014	0	0	n/a	0	0	n/a	0	0	n/a	0	0	n/a	0	0	n/a	0	0	n/a	0	0	n/a	0	0	n/a	0	0	n/a	0	0	n/a			
November 2, 2014	0	0	n/a	0	0	n/a	0	0	n/a	0	0	n/a	0	0	n/a	0	0	n/a	0	0	n/a	0	0	n/a	0	0	n/a	0	0	n/a			
November 9, 2014	0	0	n/a	0	0	n/a	0	0	n/a	0	0	n/a	0	0	n/a	0	0	n/a	0	0	n/a	0	0	n/a	0	0	n/a	0	0	n/a			
November 16, 2014	0	0	n/a	0	0	n/a	0	0	n/a	0	0	n/a	0	0	n/a	0	0	n/a	0	0	n/a	0	0	n/a	0	0	n/a	0	0	n/a			
November 23, 2014	0	0	n/a	0	0	n/a	0	0	n/a	0	0	n/a	0	0	n/a	0	0	n/a	0	0	n/a	0	0	n/a	0	0	n/a	0	0	n/a			
November 30, 2014	0	0	n/a	0	0	n/a	0	0	n/a	0	0	n/a	0	0	n/a	0	0	n/a	0	0	n/a	0	0	n/a	0	0	n/a	0	0	n/a			
December 7, 2014	0	0	n/a	0	0	n/a	0	0	n/a	0	0	n/a	0	0	n/a	0	0	n/a	0	0	n/a	0	0	n/a	0	0	n/a	0	0	n/a			
December 14, 2014	0	0	n/a	0	0	n/a	0	0	n/a	0	0	n/a	0	0	n/a	0	0	n/a	0	0	n/a	0	0	n/a	0	0	n/a	0	0	n/a			
December 21, 2014	0	0	n/a	0	0	n/a	0	0	n/a	0	0	n/a	0	0	n/a	0	0	n/a	0	0	n/a	0	0	n/a	0	0	n/a	0	0	n/a			
December 28, 2014	0	0	n/a	0	0	n/a	0	0	n/a	0	0	n/a	0	0	n/a	0	0	n/a	0	0	n/a	0	0	n/a	0	0	n/a	0	0	n/a			
<b>Total Rec Days</b>	<b>260</b>	<b>1819</b>	<b>64</b>	<b>317</b>	<b>1049</b>	<b>28</b>	<b>12122</b>	<b>351</b>	<b>6480</b>	<b>1650</b>	<b>401</b>	<b>677</b>	<b>967</b>	<b>355</b>	<b>14068</b>	<b>270</b>	<b>677</b>	<b>156</b>	<b>1403</b>	<b>4990</b>	<b>272</b>	<b>4990</b>	<b>272</b>	<b>4990</b>	<b>272</b>	<b>4990</b>	<b>272</b>	<b>4990</b>	<b>272</b>	<b>4990</b>			
<b>Average per Week</b>	<b>5</b>	<b>35</b>	<b>64</b>	<b>6</b>	<b>107</b>	<b>56</b>	<b>229</b>	<b>7</b>	<b>124</b>	<b>6397</b>	<b>124</b>	<b>677</b>	<b>967</b>	<b>7</b>	<b>14068</b>	<b>270</b>	<b>677</b>	<b>156</b>	<b>1403</b>	<b>4990</b>	<b>272</b>	<b>4990</b>	<b>272</b>	<b>4990</b>	<b>272</b>	<b>4990</b>	<b>272</b>	<b>4990</b>	<b>272</b>	<b>4990</b>			
<b>Total Non Peak</b>	<b>79</b>	<b>538</b>	<b>64</b>	<b>20</b>	<b>523</b>	<b>28</b>	<b>171</b>	<b>18</b>	<b>124</b>	<b>1650</b>	<b>401</b>	<b>677</b>	<b>967</b>	<b>355</b>	<b>14068</b>	<b>270</b>	<b>677</b>	<b>156</b>	<b>1403</b>	<b>4990</b>	<b>272</b>	<b>4990</b>	<b>272</b>	<b>4990</b>	<b>272</b>	<b>4990</b>	<b>272</b>	<b>4990</b>	<b>272</b>	<b>4990</b>			
<b>Total Peak</b>	<b>78</b>	<b>838</b>	<b>64</b>	<b>20</b>	<b>523</b>	<b>28</b>	<b>171</b>	<b>18</b>	<b>1</b>																								

Lake Lynn Hydro Plant - Cheat Lake Park, Hiking/Biking Trail and Sunset Beach Marina  
NAES Corporation - 2013 Recreational Use Surveys  
Weekly Summary

Week Beginning	Picnic Area			Playground			Day Use Boat Docks			Fishing (Banks)			Fishing (Platforms)			Fishing (Boats)			Cheat Lake Parking			Hikers/Bikers on Trail			Hiking/Biking Trail			Substation Parking			Sunset Beach Marina*		
	Total per Week	Total Non Peak Week	Total Peak Week	Total per Week	Total Non Peak Week	Total Peak Week	Total per Week	Total Non Peak Week	Total Peak Week	Total per Week	Total Non Peak Week	Total Peak Week	Total per Week	Total Non Peak Week	Total Peak Week	Total per Week	Total Non Peak Week	Total Peak Week	Total per Week	Total Non Peak Week	Total Peak Week	Total per Week	Total Non Peak Week	Total Peak Week	Total per Week	Total Non Peak Week	Total Peak Week	Total per Week	Total Non Peak Week	Total Peak Week			
December 30, 2012	0	0	n/a	0	0	n/a	0	0	n/a	0	0	n/a	0	0	n/a	0	0	n/a	0	0	n/a	0	0	n/a	0	0	n/a	0	0	n/a			
January 6, 2013	0	0	n/a	0	0	n/a	0	0	n/a	0	0	n/a	0	0	n/a	0	0	n/a	0	0	n/a	0	0	n/a	0	0	n/a	0	0	n/a			
January 13, 2013	0	0	n/a	0	0	n/a	0	0	n/a	0	0	n/a	0	0	n/a	0	0	n/a	0	0	n/a	0	0	n/a	0	0	n/a	0	0	n/a			
January 20, 2013	0	0	n/a	0	0	n/a	0	0	n/a	0	0	n/a	0	0	n/a	0	0	n/a	0	0	n/a	0	0	n/a	0	0	n/a	0	0	n/a			
January 27, 2013	0	0	n/a	0	0	n/a	0	0	n/a	0	0	n/a	0	0	n/a	0	0	n/a	0	0	n/a	0	0	n/a	0	0	n/a	0	0	n/a			
February 3, 2013	0	0	n/a	0	0	n/a	0	0	n/a	0	0	n/a	0	0	n/a	0	0	n/a	0	0	n/a	0	0	n/a	0	0	n/a	0	0	n/a			
February 10, 2013	0	0	n/a	0	0	n/a	0	0	n/a	0	0	n/a	0	0	n/a	0	0	n/a	0	0	n/a	0	0	n/a	0	0	n/a	0	0	n/a			
February 17, 2013	0	0	n/a	0	0	n/a	0	0	n/a	0	0	n/a	0	0	n/a	0	0	n/a	0	0	n/a	0	0	n/a	0	0	n/a	0	0	n/a			
February 24, 2013	0	0	n/a	0	0	n/a	0	0	n/a	0	0	n/a	0	0	n/a	0	0	n/a	0	0	n/a	0	0	n/a	0	0	n/a	0	0	n/a			
March 3, 2013	0	0	n/a	0	0	n/a	0	0	n/a	0	0	n/a	0	0	n/a	0	0	n/a	0	0	n/a	0	0	n/a	0	0	n/a	0	0	n/a			
March 10, 2013	0	0	n/a	0	0	n/a	0	0	n/a	0	0	n/a	0	0	n/a	0	0	n/a	0	0	n/a	0	0	n/a	0	0	n/a	0	0	n/a			
March 17, 2013	0	0	n/a	0	0	n/a	0	0	n/a	0	0	n/a	0	0	n/a	0	0	n/a	0	0	n/a	0	0	n/a	0	0	n/a	0	0	n/a			
March 24, 2013	0	0	n/a	0	0	n/a	0	0	n/a	0	0	n/a	0	0	n/a	0	0	n/a	0	0	n/a	0	0	n/a	0	0	n/a	0	0	n/a			
March 31, 2013	0	0	n/a	0	0	n/a	0	0	n/a	0	0	n/a	0	0	n/a	0	0	n/a	0	0	n/a	0	0	n/a	0	0	n/a	0	0	n/a			
April 7, 2013	0	0	n/a	0	0	n/a	0	0	n/a	0	0	n/a	0	0	n/a	0	0	n/a	0	0	n/a	0	0	n/a	0	0	n/a	0	0	n/a			
April 14, 2013	0	0	n/a	0	0	n/a	0	0	n/a	0	0	n/a	0	0	n/a	0	0	n/a	0	0	n/a	0	0	n/a	0	0	n/a	0	0	n/a			
April 21, 2013	0	0	n/a	0	0	n/a	0	0	n/a	0	0	n/a	0	0	n/a	0	0	n/a	0	0	n/a	0	0	n/a	0	0	n/a	0	0	n/a			
April 28, 2013	0	0	n/a	0	0	n/a	0	0	n/a	0	0	n/a	0	0	n/a	0	0	n/a	0	0	n/a	0	0	n/a	0	0	n/a	0	0	n/a			
May 5, 2013	0	0	n/a	0	0	n/a	0	0	n/a	0	0	n/a	0	0	n/a	0	0	n/a	0	0	n/a	0	0	n/a	0	0	n/a	0	0	n/a			
May 12, 2013	0	0	n/a	0	0	n/a	0	0	n/a	0	0	n/a	0	0	n/a	0	0	n/a	0	0	n/a	0	0	n/a	0	0	n/a	0	0	n/a			
May 19, 2013	0	0	n/a	0	0	n/a	0	0	n/a	0	0	n/a	0	0	n/a	0	0	n/a	0	0	n/a	0	0	n/a	0	0	n/a	0	0	n/a			
May 26, 2013	0	0	n/a	0	0	n/a	0	0	n/a	0	0	n/a	0	0	n/a	0	0	n/a	0	0	n/a	0	0	n/a	0	0	n/a	0	0	n/a			
June 2, 2013	0	0	n/a	0	0	n/a	0	0	n/a	0	0	n/a	0	0	n/a	0	0	n/a	0	0	n/a	0	0	n/a	0	0	n/a	0	0	n/a			
June 9, 2013	0	0	n/a	0	0	n/a	0	0	n/a	0	0	n/a	0	0	n/a	0	0	n/a	0	0	n/a	0	0	n/a	0	0	n/a	0	0	n/a			
June 16, 2013	0	0	n/a	0	0	n/a	0	0	n/a	0	0	n/a	0	0	n/a	0	0	n/a	0	0	n/a	0	0	n/a	0	0	n/a	0	0	n/a			
June 23, 2013	0	0	n/a	0	0	n/a	0	0	n/a	0	0	n/a	0	0	n/a	0	0	n/a	0	0	n/a	0	0	n/a	0	0	n/a	0	0	n/a			
June 30, 2013	0	0	n/a	0	0	n/a	0	0	n/a	0	0	n/a	0	0	n/a	0	0	n/a	0	0	n/a	0	0	n/a	0	0	n/a	0	0	n/a			
July 7, 2013	0	0	n/a	0	0	n/a	0	0	n/a	0	0	n/a	0	0	n/a	0	0	n/a	0	0	n/a	0	0	n/a	0	0	n/a	0	0	n/a			
July 14, 2013	0	0	n/a	0	0	n/a	0	0	n/a	0	0	n/a	0	0	n/a	0	0	n/a	0	0	n/a	0	0	n/a	0	0	n/a	0	0	n/a			
July 21, 2013	0	0	n/a	0	0	n/a	0	0	n/a	0	0	n/a	0	0	n/a	0	0	n/a	0	0	n/a	0	0	n/a	0	0	n/a	0	0	n/a			
July 28, 2013	0	0	n/a	0	0	n/a	0	0	n/a	0	0	n/a	0	0	n/a	0	0	n/a	0	0	n/a	0	0	n/a	0	0	n/a	0	0	n/a			
August 4, 2013	0	0	n/a	0	0	n/a	0	0	n/a	0	0	n/a	0	0	n/a	0	0	n/a	0	0	n/a	0	0	n/a	0	0	n/a	0	0	n/a			
August 11, 2014	0	0	n/a	0	0	n/a	0	0	n/a	0	0	n/a	0	0	n/a	0	0	n/a	0	0	n/a	0	0	n/a	0	0	n/a	0	0	n/a			
August 18, 2014	0	0	n/a	0	0	n/a	0	0	n/a	0	0	n/a	0	0	n/a	0	0	n/a	0	0	n/a	0	0	n/a	0	0	n/a	0	0	n/a			
August 25, 2014	0	0	n/a	0	0	n/a	0	0	n/a	0	0	n/a	0	0	n/a	0	0	n/a	0	0	n/a	0	0	n/a	0	0	n/a	0	0	n/a			
September 1, 2013	0	0	n/a	0	0	n/a	0	0	n/a	0	0	n/a	0	0	n/a	0	0	n/a	0	0	n/a	0	0	n/a	0	0	n/a	0	0	n/a			
September 8, 2013	0	0	n/a	0	0	n/a	0	0	n/a	0	0	n/a	0	0	n/a	0	0	n/a	0	0	n/a	0	0	n/a	0	0	n/a	0	0	n/a			
September 15, 2013	0	0	n/a	0	0	n/a	0	0	n/a	0	0	n/a	0	0	n/a	0	0	n/a	0	0	n/a	0	0	n/a	0	0	n/a	0	0	n/a			
September 22, 2013	0	0	n/a	0	0	n/a	0	0	n/a	0	0	n/a	0	0	n/a	0	0	n/a	0	0	n/a	0	0	n/a	0	0	n/a	0	0	n/a			
September 29, 2013	0	0	n/a	0	0	n/a	0	0	n/a	0	0	n/a	0	0	n/a	0	0	n/a	0	0	n/a	0	0	n/a	0	0	n/a	0	0	n/a			
October 6, 2013	0	0	n/a	0	0	n/a	0	0	n/a	0	0	n/a	0	0	n/a	0	0	n/a	0	0	n/a	0	0	n/a	0	0	n/a	0	0	n/a			
October 13, 2013	0	0	n/a	0	0	n/a	0	0	n/a	0	0	n/a	0	0	n/a	0	0	n/a	0	0	n/a	0	0	n/a	0	0	n/a	0	0	n/a			
October 20, 2013	0	0	n/a	0	0	n/a	0	0	n/a	0	0	n/a	0	0	n/a	0	0	n/a	0	0	n/a	0	0	n/a	0	0	n/a	0	0	n/a			
October 27, 2013	0	0	n/a	0	0	n/a	0	0	n/a	0	0	n/a	0	0	n/a	0	0	n/a	0	0	n/a	0	0	n/a	0	0	n/a	0	0	n/a			
November 3, 2013	0	0	n/a	0	0	n/a	0	0	n/a	0	0	n/a	0	0	n/a	0	0	n/a	0	0	n/a	0	0	n/a	0	0	n/a	0	0	n/a			
November 10, 2013	0	0	n/a	0	0	n/a	0	0	n/a	0	0	n/a	0	0	n/a	0	0	n/a	0	0	n/a	0	0	n/a	0	0	n/a	0	0	n/a			
November 17, 2013	0	0	n/a	0	0	n/a	0	0	n/a	0	0	n/a	0	0	n/a	0	0	n/a	0	0	n/a	0	0	n/a	0	0	n/a	0	0	n/a			
November 24, 2013	0	0	n/a	0	0	n/a	0	0	n/a	0	0	n/a	0	0	n/a	0	0	n/a	0	0	n/a	0	0	n/a	0	0	n/a	0	0	n/a			
December 1, 2013	0	0	n/a	0	0	n/a	0	0	n/a	0	0	n/a	0	0	n/a	0	0	n/a	0	0	n/a	0	0	n/a	0	0	n/a	0	0	n/a			
December 8, 2013	0	0	n/a	0	0	n/a	0	0	n/a	0	0	n/a	0	0	n/a	0	0	n/a	0	0	n/a	0	0	n/a	0	0	n/a	0	0	n/a			
December 15, 2013	0	0	n/a	0	0	n/a	0	0	n/a	0	0	n/a	0	0	n/a	0	0	n/a	0	0	n/a	0	0	n/a	0	0	n/a	0	0	n/a			
December 22, 2013	0	0	n/a	0	0	n/a	0	0	n/a	0	0	n/a	0	0	n/a	0	0	n/a	0	0	n/a	0	0	n/a	0	0	n/a	0	0	n/a			
December 29, 2013	0	0	n/a	0	0	n/a	0	0	n/a	0	0	n/a	0	0	n/a	0	0	n/a	0	0	n/a	0	0	n/a	0	0	n/a	0	0	n/a			
Total Rec Days	64	1595	31	732	78	451	9	228	24	19	893	281	5	101	24	8927	6309	678	110	2419	153	6546	488	229	76	5	0	0	n/a				
Average per Week	1	31	6	9	1	7	0.14	0.26	1	0.33	35.4	4.4	0.19	0.21	1	108.1	105.2	10.9	1.53	38.98	1.93	74.14	1.11	3.56	1.19	0.14	0.14	0.14	n/a				
Total Peak	31	732	78	451	9	228	24	19	893	281	5	101	24	8927	6309	678	110	2419	153	6546	488	229	76	5	0	0	0	0	0	n/a			

\*Sunset Beach Marina not available for 2013

Total Non Peak Weekends	16921
Saturday and Sunday	173
Avg/Day	

Total Peak Weekends	339
Avg/Day	113
Memorial Day (Sat - Mon)	506
4th of July (4th, Sat and Sun)	168.7
Labor Day (Sat - Mon)	683
227.7	

Cheat Lake Total Visitors: 32945  
Sunset Beach Marina Total Visitors: N/A



Lake Lynn Hydro Plant - Cheat Lake Park, Hiking/Biking Trail and Sunset Beach Marina  
NAES Corporation - 2012 Recreational Use Surveys  
Weekly Summary

Week Beginning	Picnic Area			Playground			Day Use Boat Docks			Fishing (Banks)			Fishing (Platforms)			Fishing (Boats)			Cheat Lake Parking			Hikers/Bikers on Trail			Hiking/Biking Trail			Substation Parking			Sunset Beach Marina*		
	Total per Week	Total Non Peak Weekend	Total Peak Weekend	Total per Week	Total Non Peak Weekend	Total Peak Weekend	Total per Week	Total Non Peak Weekend	Total Peak Weekend	Total per Week	Total Non Peak Weekend	Total Peak Weekend	Total per Week	Total Non Peak Weekend	Total Peak Weekend	Total per Week	Total Non Peak Weekend	Total Peak Weekend	Total per Week	Total Non Peak Weekend	Total Peak Weekend	Total per Week	Total Non Peak Weekend	Total Peak Weekend	Total per Week	Total Non Peak Weekend	Total Peak Weekend	Total per Week	Total Non Peak Weekend	Total Peak Weekend			
January 1, 2012	0	0	n/a	0	0	n/a	0	0	n/a	0	0	n/a	0	0	n/a	0	0	n/a	0	0	n/a	0	0	n/a	0	0	n/a	0	0	n/a			
January 8, 2012	0	0	n/a	0	0	n/a	0	0	n/a	0	0	n/a	0	0	n/a	0	0	n/a	0	0	n/a	0	0	n/a	0	0	n/a	0	0	n/a			
January 15, 2012	0	0	n/a	0	0	n/a	0	0	n/a	0	0	n/a	0	0	n/a	0	0	n/a	0	0	n/a	0	0	n/a	0	0	n/a	0	0	n/a			
January 22, 2012	0	0	n/a	0	0	n/a	0	0	n/a	0	0	n/a	0	0	n/a	0	0	n/a	0	0	n/a	0	0	n/a	0	0	n/a	0	0	n/a			
January 29, 2012	0	0	n/a	0	0	n/a	0	0	n/a	0	0	n/a	0	0	n/a	0	0	n/a	0	0	n/a	0	0	n/a	0	0	n/a	0	0	n/a			
February 5, 2012	0	0	n/a	0	0	n/a	0	0	n/a	0	0	n/a	0	0	n/a	0	0	n/a	0	0	n/a	0	0	n/a	0	0	n/a	0	0	n/a			
February 12, 2012	0	0	n/a	0	0	n/a	0	0	n/a	0	0	n/a	0	0	n/a	0	0	n/a	0	0	n/a	0	0	n/a	0	0	n/a	0	0	n/a			
February 19, 2012	0	0	n/a	0	0	n/a	0	0	n/a	0	0	n/a	0	0	n/a	0	0	n/a	0	0	n/a	0	0	n/a	0	0	n/a	0	0	n/a			
February 26, 2012	0	0	n/a	0	0	n/a	0	0	n/a	0	0	n/a	0	0	n/a	0	0	n/a	0	0	n/a	0	0	n/a	0	0	n/a	0	0	n/a			
March 4, 2012	0	0	n/a	0	0	n/a	0	0	n/a	0	0	n/a	0	0	n/a	0	0	n/a	0	0	n/a	0	0	n/a	0	0	n/a	0	0	n/a			
March 11, 2012	0	0	n/a	0	0	n/a	0	0	n/a	0	0	n/a	0	0	n/a	0	0	n/a	0	0	n/a	0	0	n/a	0	0	n/a	0	0	n/a			
March 18, 2012	0	0	n/a	0	0	n/a	0	0	n/a	0	0	n/a	0	0	n/a	0	0	n/a	0	0	n/a	0	0	n/a	0	0	n/a	0	0	n/a			
March 25, 2012	0	0	n/a	0	0	n/a	0	0	n/a	0	0	n/a	0	0	n/a	0	0	n/a	0	0	n/a	0	0	n/a	0	0	n/a	0	0	n/a			
April 1, 2012	0	0	n/a	0	0	n/a	0	0	n/a	0	0	n/a	0	0	n/a	0	0	n/a	0	0	n/a	0	0	n/a	0	0	n/a	0	0	n/a			
April 8, 2012	0	0	n/a	0	0	n/a	0	0	n/a	0	0	n/a	0	0	n/a	0	0	n/a	0	0	n/a	0	0	n/a	0	0	n/a	0	0	n/a			
April 15, 2012	0	0	n/a	0	0	n/a	0	0	n/a	0	0	n/a	0	0	n/a	0	0	n/a	0	0	n/a	0	0	n/a	0	0	n/a	0	0	n/a			
April 22, 2012	0	0	n/a	0	0	n/a	0	0	n/a	0	0	n/a	0	0	n/a	0	0	n/a	0	0	n/a	0	0	n/a	0	0	n/a	0	0	n/a			
April 29, 2012	0	0	n/a	0	0	n/a	0	0	n/a	0	0	n/a	0	0	n/a	0	0	n/a	0	0	n/a	0	0	n/a	0	0	n/a	0	0	n/a			
May 6, 2012	0	0	n/a	0	0	n/a	0	0	n/a	0	0	n/a	0	0	n/a	0	0	n/a	0	0	n/a	0	0	n/a	0	0	n/a	0	0	n/a			
May 13, 2012	0	0	n/a	0	0	n/a	0	0	n/a	0	0	n/a	0	0	n/a	0	0	n/a	0	0	n/a	0	0	n/a	0	0	n/a	0	0	n/a			
May 20, 2012	4	3	n/a	53	22	n/a	53	22	n/a	53	22	n/a	53	22	n/a	53	22	n/a	53	22	n/a	53	22	n/a	53	22	n/a	53	22	n/a			
May 27, 2012	0	0	n/a	0	0	n/a	0	0	n/a	0	0	n/a	0	0	n/a	0	0	n/a	0	0	n/a	0	0	n/a	0	0	n/a	0	0	n/a			
June 3, 2012	0	0	n/a	0	0	n/a	0	0	n/a	0	0	n/a	0	0	n/a	0	0	n/a	0	0	n/a	0	0	n/a	0	0	n/a	0	0	n/a			
June 10, 2012	0	0	n/a	0	0	n/a	0	0	n/a	0	0	n/a	0	0	n/a	0	0	n/a	0	0	n/a	0	0	n/a	0	0	n/a	0	0	n/a			
June 17, 2012	0	0	n/a	0	0	n/a	0	0	n/a	0	0	n/a	0	0	n/a	0	0	n/a	0	0	n/a	0	0	n/a	0	0	n/a	0	0	n/a			
June 24, 2012	4	0	n/a	45	16	n/a	73	55	n/a	20	8	n/a	20	8	n/a	402	367	n/a	287	148	n/a	0	0	n/a	0	0	n/a	0	0	n/a			
July 1, 2012	0	0	n/a	0	0	n/a	0	0	n/a	0	0	n/a	0	0	n/a	0	0	n/a	0	0	n/a	0	0	n/a	0	0	n/a	0	0	n/a			
July 8, 2012	0	0	n/a	0	0	n/a	0	0	n/a	0	0	n/a	0	0	n/a	0	0	n/a	0	0	n/a	0	0	n/a	0	0	n/a	0	0	n/a			
July 15, 2012	0	0	n/a	0	0	n/a	0	0	n/a	0	0	n/a	0	0	n/a	0	0	n/a	0	0	n/a	0	0	n/a	0	0	n/a	0	0	n/a			
July 22, 2012	0	0	n/a	0	0	n/a	0	0	n/a	0	0	n/a	0	0	n/a	0	0	n/a	0	0	n/a	0	0	n/a	0	0	n/a	0	0	n/a			
July 29, 2012	3	0	n/a	107	35	n/a	73	49	n/a	28	13	n/a	28	13	n/a	1416	1336	n/a	345	150	n/a	0	0	n/a	0	0	n/a	0	0	n/a			
August 5, 2012	2	0	n/a	78	7	n/a	64	21	n/a	34	14	n/a	34	14	n/a	185	66	n/a	241	39	n/a	822	391	n/a	12	7	n/a	0	0	n/a			
August 12, 2012	9	9	n/a	56	28	n/a	45	26	n/a	38	12	n/a	38	12	n/a	794	648	n/a	270	144	n/a	556	119	n/a	7	0	n/a	0	0	n/a			
August 19, 2012	2	2	n/a	49	17	n/a	52	38	n/a	21	9	n/a	21	9	n/a	813	645	n/a	237	135	n/a	666	385	n/a	15	6	n/a	0	0	n/a			
August 26, 2012	1	1	n/a	0	56	31	4	18	6	6	36	6	6	36	6	6	649	266	n/a	166	221	n/a	425	189	n/a	18	8	n/a	0	0	n/a		
September 2, 2012	3	0	n/a	31	0	n/a	5	31	0	15	18	0	15	18	0	334	2	n/a	68	139	3	206	8	33	8	0	2	n/a	0	0	n/a		
September 9, 2012	0	1	n/a	38	24	n/a	10	2	n/a	41	16	n/a	41	16	n/a	185	70	n/a	134	50	n/a	225	96	n/a	7	5	n/a	0	0	n/a			
September 16, 2012	1	0	n/a	77	43	n/a	13	5	n/a	29	15	n/a	29	15	n/a	168	105	n/a	126	60	n/a	309	168	n/a	12	4	n/a	0	0	n/a			
September 23, 2012	2	0	n/a	16	1	n/a	0	0	n/a	1	0	n/a	1	0	n/a	28	13	n/a	79	16	n/a	96	0	n/a	4	1	n/a	0	0	n/a			
September 30, 2012	0	0	n/a	41	10	n/a	0	0	n/a	13	2	n/a	13	2	n/a	100	26	n/a	103	35	n/a	185	72	n/a	7	3	n/a	0	0	n/a			
October 7, 2012	0	0	n/a	9	0	n/a	0	0	n/a	10	10	n/a	10	10	n/a	22	8	n/a	71	33	n/a	280	180	n/a	11	8	n/a	0	0	n/a			
October 14, 2012	0	0	n/a	47	35	n/a	0	0	n/a	13	10	n/a	13	10	n/a	33	20	n/a	132	76	n/a	240	85	n/a	13	4	n/a	0	0	n/a			
October 21, 2012	0	0	n/a	47	18	n/a	0	0	n/a	14	1	n/a	14	1	n/a	38	9	n/a	122	34	n/a	240	85	n/a	13	4	n/a	0	0	n/a			
October 28, 2012	0	0	n/a	2	2	n/a	0	0	n/a	0	0	n/a	0	0	n/a	1	1	n/a	31	18	n/a	63	41	n/a	3	2	n/a	0	0	n/a			
November 4, 2012	0	0	n/a	3	0	n/a	0	0	n/a	3	1	n/a	3	1	n/a	23	15	n/a	68	33	n/a	115	63	n/a	22	5	n/a	0	0	n/a			
November 11, 2012	0	0	n/a	42	30	n/a	0	0	n/a	10	10	n/a	10	10	n/a	18	9	n/a	139	108	n/a	262	200	n/a	38	6	n/a	0	0	n/a			
November 18, 2012	0	0	n/a	32	4	n/a	0	0	n/a	4	1	n/a	4	1	n/a	19	6	n/a	101	34	n/a	195	78	n/a	11	2	n/a	0	0	n/a			
November 25, 2012	0	0	n/a	1	0	n/a	0	0	n/a	0	0	n/a	0	0	n/a	7	5	n/a	35	22	n/a	56	36	n/a	20	1	n/a	0	0	n/a			
December 2, 2012	0	0	n/a	0	0	n/a	0	0	n/a	0	0	n/a	0	0	n/a	0	0	n/a	0	0	n/a	0	0	n/a	0	0	n/a	0	0	n/a			
December 9, 2012	0	0	n/a	0	0	n/a	0	0	n/a	0	0	n/a	0	0	n/a	0	0	n/a	0	0	n/a	0	0	n/a	0	0	n/a	0	0	n/a			
December 16, 2012	0	0	n/a	0	0	n/a	0	0	n/a	0	0	n/a	0	0	n/a	0	0	n/a	0	0	n/a	0	0	n/a	0	0	n/a	0	0	n/a			
December 23, 2012	0	0	n/a	0	0	n/a	0	0	n/a	0	0	n/a	0	0	n/a	0	0	n/a	0	0	n/a	0	0	n/a	0	0	n/a	0	0	n/a			
Total Rec Days	56			1090			508			620			173			6715			4238			8602			291			85			n/a		
Average per Week	1			21			10			12			3			110			81			164			6			9			n/a		
Total Non Peak	14			425			228			56			13			3900			249			283			462			85			n/a		

\*Sunset Beach Marina not available for 2012

Cheat Lake Total Visitors:  
Sunset Beach Marina Total Visitors:

Total Non Peak Weekends	21191
Saturday and Sunday Avg per Day	N/A

Total Peak Weekends	9914
Avg/day	101
Total/Weekend	663
Memorial Day (Sat - Mon) 4th of July (Sat and Sun)	0
Labor Day (Sat - Mon)	475

Lake Lynn Hydro Plant - Tailrace Fishing Area  
NAES Corporation - 2014 Recreational Use Surveys  
Weekly Summary

Week Beginning	Fishing (Banks)			Fishing (Access Platform)			Fishing (Boatng)			Parking		
	Total per Week	Total Non Peak Weekend	Total Peak Weekend	Total per Week	Total Non Peak Weekend	Total Peak Weekend	Total per Week	Total Non Peak Weekend	Total Peak Weekend	Total per Week	Total Non Peak Weekend	Total Peak Weekend
December 29, 2013	0	0	n/a	0	0	n/a	0	0	n/a	0	0	n/a
January 5, 2014	0	0	n/a	0	0	n/a	0	0	n/a	0	0	n/a
January 12, 2014	0	0	n/a	0	0	n/a	0	0	n/a	0	0	n/a
January 19, 2014	0	0	n/a	0	0	n/a	0	0	n/a	0	0	n/a
January 26, 2014	0	0	n/a	0	0	n/a	0	0	n/a	0	0	n/a
February 2, 2014	0	0	n/a	2	2	n/a	0	0	n/a	1	1	n/a
February 9, 2014	0	0	n/a	0	0	n/a	0	0	n/a	0	0	n/a
February 16, 2014	0	0	n/a	0	0	n/a	0	0	n/a	0	0	n/a
February 23, 2014	0	0	n/a	0	0	n/a	0	0	n/a	0	0	n/a
March 2, 2014	0	0	n/a	4	4	n/a	0	0	n/a	3	3	n/a
March 9, 2014	0	0	n/a	11	2	n/a	0	0	n/a	10	3	n/a
March 16, 2014	1	1	n/a	1	1	n/a	0	0	n/a	2	2	n/a
March 23, 2014	2	2	n/a	5	4	n/a	0	0	n/a	5	4	n/a
March 30, 2014	0	0	n/a	5	0	n/a	0	0	n/a	3	0	n/a
April 6, 2014	4	4	n/a	11	9	n/a	0	0	n/a	17	8	n/a
April 13, 2014	2	2	n/a	10	10	n/a	0	0	n/a	1	1	n/a
April 20, 2014	6	0	n/a	19	8	n/a	0	0	n/a	15	6	n/a
April 27, 2014	0	0	n/a	4	4	n/a	0	0	n/a	6	2	n/a
May 4, 2014	2	0	n/a	14	0	n/a	0	0	n/a	9	0	n/a
May 11, 2014	1	0	n/a	9	3	n/a	0	0	n/a	4	0	n/a
May 18, 2014	4	0	0	19	0	2	1	0	0	24	0	2
May 25, 2014	0	0	0	17	7	0	0	0	0	9	3	0
June 1, 2014	5	1	n/a	17	10	n/a	0	0	n/a	4	4	n/a
June 8, 2014	7	4	n/a	23	12	n/a	0	0	n/a	21	11	n/a
June 15, 2014	4	3	n/a	29	17	n/a	2	0	n/a	22	12	n/a
June 22, 2014	0	0	n/a	7	6	n/a	0	0	n/a	8	8	n/a
June 29, 2014	2	0	2	8	0	0	6	0	6	23	0	11
July 6, 2014	0	0	0	20	1	3	0	0	0	18	0	4
July 13, 2014	4	1	n/a	28	6	n/a	0	0	n/a	12	1	n/a
July 20, 2014	0	0	n/a	24	10	n/a	0	0	n/a	0	4	n/a
July 27, 2014	2	2	n/a	9	5	n/a	0	0	n/a	8	4	n/a
August 3, 2014	10	6	n/a	0	0	n/a	10	6	n/a	0	0	n/a
August 10, 2014	11	5	n/a	3	3	n/a	7	1	n/a	9	9	n/a
August 17, 2014	1	1	n/a	5	5	n/a	1	1	n/a	5	5	n/a
August 24, 2014	0	0	0	0	0	0	0	0	0	0	0	0
August 31, 2014	12	3	3	0	0	0	12	3	3	0	0	0
September 7, 2014	0	0	n/a	0	0	n/a	0	0	n/a	0	0	n/a
September 14, 2014	7	2	n/a	0	0	n/a	7	2	n/a	0	0	n/a
September 21, 2014	8	7	n/a	0	0	n/a	8	7	n/a	0	0	n/a
September 28, 2014	9	6	n/a	0	0	n/a	9	6	n/a	0	0	n/a
October 5, 2014	2	0	n/a	0	0	n/a	2	0	n/a	0	0	n/a
October 12, 2014	11	3	n/a	0	0	n/a	13	5	n/a	0	0	n/a
October 19, 2014	1	0	n/a	0	0	n/a	1	0	n/a	0	0	n/a
October 26, 2014	1	0	n/a	0	0	n/a	1	0	n/a	0	0	n/a
November 2, 2014	0	0	n/a	0	0	n/a	0	0	n/a	0	0	n/a
November 9, 2014	0	0	n/a	0	0	n/a	0	0	n/a	0	0	n/a
November 16, 2014	0	0	n/a	0	0	n/a	0	0	n/a	0	0	n/a
November 23, 2014	5	5	n/a	0	0	n/a	7	7	n/a	0	0	n/a
November 30, 2014	0	0	n/a	0	0	n/a	0	0	n/a	0	0	n/a
December 7, 2014	0	0	n/a	0	0	n/a	0	0	n/a	0	0	n/a
December 14, 2014	0	0	n/a	0	0	n/a	0	0	n/a	0	0	n/a
December 21, 2014	0	0	n/a	0	0	n/a	0	0	n/a	0	0	n/a
December 28, 2014	0	0	n/a	0	0	n/a	0	0	n/a	0	0	n/a
<b>Total Rec Days</b>	<b>124</b>			<b>304</b>			<b>87</b>			<b>239</b>		
<b>Average per Week</b>	<b>2</b>			<b>6</b>			<b>2</b>			<b>5</b>		
<b>Total Non Peak</b>		<b>58</b>			<b>129</b>			<b>38</b>			<b>91</b>	
<b>Total Peak</b>			<b>5</b>			<b>5</b>			<b>9</b>			<b>17</b>

Total Peak Weekends		
	Total/Weekend	Avg/day
Memorial Day (Sat - Mon)	4	1.3
4th of July (4th, Sat and Sun)	26	8.7
Labor Day (Sat - Mon)	6	2

Total Non Peak Weekends	
Saturday and Sunday	316
Avg/per Day	3

Total Visitors

754



Lake Lynn Hydro Plant - Tailrace Fishing Area  
NAES Corporation - 2013 Recreational Use Surveys  
Weekly Summary

Week Beginning	Fishing (Banks)			Fishing (Access Platform)			Fishing (Boating)			Parking		
	Total per Week	Total Non Peak Weekend	Total Peak Weekend	Total per Week	Total Non Peak Weekend	Total Peak Weekend	Total per Week	Total Non Peak Weekend	Total Peak Weekend	Total per Week	Total Non Peak Weekend	Total Peak Weekend
December 30, 2012	0	0	n/a	0	0	n/a	0	0	n/a	0	0	n/a
January 6, 2013	0	0	n/a	0	0	n/a	0	0	n/a	0	0	n/a
January 13, 2013	0	0	n/a	0	0	n/a	0	0	n/a	0	0	n/a
January 20, 2013	0	0	n/a	0	0	n/a	0	0	n/a	0	0	n/a
January 27, 2013	0	0	n/a	0	0	n/a	0	0	n/a	0	0	n/a
February 3, 2013	0	0	n/a	0	0	n/a	0	0	n/a	0	0	n/a
February 10, 2013	0	0	n/a	0	0	n/a	0	0	n/a	0	0	n/a
February 17, 2013	0	0	n/a	0	0	n/a	0	0	n/a	0	0	n/a
February 24, 2013	0	0	n/a	0	0	n/a	0	0	n/a	0	0	n/a
March 3, 2013	0	0	n/a	0	0	n/a	0	0	n/a	0	0	n/a
March 10, 2013	0	0	n/a	0	0	n/a	0	0	n/a	0	0	n/a
March 17, 2013	0	0	n/a	0	0	n/a	0	0	n/a	0	0	n/a
March 24, 2013	0	0	n/a	0	0	n/a	0	0	n/a	0	0	n/a
March 31, 2013	0	0	n/a	0	0	n/a	0	0	n/a	0	0	n/a
April 7, 2013	0	0	n/a	0	0	n/a	0	0	n/a	0	0	n/a
April 14, 2013	0	0	n/a	0	0	n/a	0	0	n/a	0	0	n/a
April 21, 2013	0	0	n/a	0	0	n/a	0	0	n/a	0	0	n/a
April 28, 2013	0	0	n/a	0	0	n/a	0	0	n/a	0	0	n/a
May 5, 2013	1	0	n/a	0	0	n/a	1	0	n/a	0	0	n/a
May 12, 2013	11	7	n/a	1	0	n/a	10	7	n/a	0	0	n/a
May 19, 2013	12	5	n/a	0	0	n/a	12	5	n/a	0	0	n/a
May 26, 2013	33	4	13	4	0	3	27	4	10	0	0	0
June 2, 2013	31	4	3	1	0	0	27	4	2	2	0	0
June 9, 2013	25	5	n/a	2	0	n/a	23	5	n/a	0	0	n/a
June 16, 2013	35	7	n/a	6	1	n/a	30	6	n/a	0	0	n/a
June 23, 2013	14	3	n/a	1	0	n/a	15	3	n/a	0	0	n/a
June 30, 2013	49	12	15	0	0	0	44	12	10	0	0	0
July 7, 2013	26	5	2	4	0	0	26	5	2	5	0	0
July 14, 2013	22	5	n/a	5	0	n/a	13	5	n/a	0	0	n/a
July 21, 2013	24	11	n/a	6	4	n/a	18	7	n/a	0	0	n/a
July 28, 2013	43	16	n/a	2	0	n/a	42	16	n/a	0	0	n/a
August 4, 2013	43	16	n/a	2	0	n/a	42	16	n/a	0	0	n/a
August 11, 2014	13	2	n/a	7	3	n/a	25	16	n/a	3	2	n/a
August 18, 2014	20	8	n/a	0	0	n/a	18	8	n/a	1	0	n/a
August 25, 2013	11	8	1	2	0	2	10	8	0	6	6	0
September 1, 2013	16	2	11	3	0	3	13	2	8	0	0	0
September 8, 2013	24	8	n/a	1	1	n/a	23	13	n/a	0	0	n/a
September 15, 2013	0	0	n/a	0	0	n/a	0	0	n/a	0	0	n/a
September 22, 2013	8	2	n/a	0	0	n/a	8	2	n/a	3	0	n/a
September 29, 2013	27	8	n/a	2	0	n/a	25	16	n/a	0	0	n/a
October 6, 2013	15	8	n/a	2	2	n/a	13	6	n/a	0	0	n/a
October 13, 2013	11	8	n/a	0	0	n/a	9	5	n/a	0	0	n/a
October 20, 2013	0	8	n/a	0	0	n/a	0	0	n/a	0	0	n/a
October 27, 2013	0	8	n/a	0	0	n/a	0	0	n/a	0	0	n/a
November 3, 2013	0	8	n/a	0	0	n/a	0	0	n/a	0	0	n/a
November 10, 2013	0	8	n/a	0	0	n/a	0	0	n/a	0	0	n/a
November 17, 2013	0	8	n/a	0	0	n/a	0	0	n/a	0	0	n/a
November 24, 2013	0	8	n/a	0	0	n/a	0	0	n/a	0	0	n/a
December 1, 2013	0	8	n/a	0	0	n/a	0	0	n/a	0	0	n/a
December 8, 2013	0	8	n/a	0	0	n/a	0	0	n/a	0	0	n/a
December 15, 2013	0	8	n/a	0	0	n/a	0	0	n/a	0	0	n/a
December 22, 2013	0	8	n/a	0	0	n/a	0	0	n/a	0	0	n/a
<b>Total Rec Days</b>	<b>514</b>			<b>51</b>			<b>474</b>			<b>20</b>		
<b>Average per Week</b>	<b>10</b>			<b>1</b>			<b>9</b>			<b>0</b>		
<b>Total Non Peak</b>		<b>234</b>			<b>11</b>			<b>171</b>			<b>8</b>	
<b>Total Peak</b>			<b>45</b>			<b>8</b>			<b>32</b>			<b>0</b>

Total Peak Weekends		
	Total/Weekend	Avg/day
Memorial Day (Sat - Mon)	26	8.7
4th of July (4th, Sat and Sun)	25	8.3
Labor Day (Sat - Mon)	25	8.3

Total Non Peak Weekends	
Saturday and Sunday	424
Avg/per Day	4

Total Visitors

1059

Lake Lynn Hydro Plant - Tailrace Fishing Area  
NAES Corporation - 2012 Recreational Use Surveys  
Weekly Summary

Week Beginning	Fishing (Banks)			Fishing (Access Platform)			Fishing (Boating)			Parking		
	Total per Week	Total Non Peak Weekend	Total Peak Weekend	Total per Week	Total Non Peak Weekend	Total Peak Weekend	Total per Week	Total Non Peak Weekend	Total Peak Weekend	Total per Week	Total Non Peak Weekend	Total Peak Weekend
January 1, 2012	0	8	n/a	0	0	n/a	0	0	n/a	0	0	n/a
January 8, 2012	0	8	n/a	0	0	n/a	0	0	n/a	0	0	n/a
January 15, 2012	0	8	n/a	0	0	n/a	0	0	n/a	0	0	n/a
January 22, 2012	0	8	n/a	0	0	n/a	0	0	n/a	0	0	n/a
January 29, 2012	0	8	n/a	0	0	n/a	0	0	n/a	0	0	n/a
February 5, 2012	0	8	n/a	0	0	n/a	0	0	n/a	0	0	n/a
February 12, 2012	0	8	n/a	0	0	n/a	0	0	n/a	0	0	n/a
February 19, 2012	0	8	n/a	0	0	n/a	0	0	n/a	0	0	n/a
February 26, 2012	4	8	n/a	0	0	n/a	4	0	n/a	0	0	n/a
March 4, 2012	5	8	n/a	1	1	n/a	6	6	n/a	0	0	n/a
March 11, 2012	59	8	n/a	11	3	n/a	39	15	n/a	0	0	n/a
March 18, 2012	44	8	n/a	2	0	n/a	42	11	n/a	0	0	n/a
March 25, 2012	27	8	n/a	3	3	n/a	24	13	n/a	0	0	n/a
April 1, 2012	60	8	n/a	4	2	n/a	52	17	n/a	0	0	n/a
April 8, 2012	29	8	n/a	3	0	n/a	26	10	n/a	0	0	n/a
April 15, 2012	48	8	n/a	8	4	n/a	40	9	n/a	0	0	n/a
April 22, 2012	27	8	n/a	2	0	n/a	25	5	n/a	0	0	n/a
April 29, 2012	24	8	n/a	1	1	n/a	17	5	n/a	0	0	n/a
May 6, 2012	64	8	n/a	10	6	n/a	54	15	n/a	0	0	n/a
May 13, 2012	28	8	n/a	1	1	n/a	27	13	n/a	0	0	n/a
May 20, 2012	35	5	7	0	0	0	35	5	7	0	0	0
May 27, 2012	23	5	7	0	0	0	23	5	7	0	0	0
June 3, 2012	27	8	n/a	0	0	n/a	30	9	n/a	0	0	n/a
June 10, 2012	42	8	n/a	2	2	n/a	40	8	n/a	0	0	n/a
June 17, 2012	22	8	n/a	1	0	n/a	21	8	n/a	0	0	n/a
June 24, 2012	38	8	n/a	2	0	n/a	36	10	n/a	0	0	n/a
July 1, 2012	16	4	5	0	0	0	16	4	5	0	0	0
July 8, 2012	20	0	5	0	0	0	20	0	5	0	0	0
July 15, 2012	11	8	n/a	0	0	n/a	11	5	n/a	0	0	n/a
July 22, 2012	14	8	n/a	1	1	n/a	13	9	n/a	0	0	n/a
July 29, 2012	6	8	n/a	1	0	n/a	5	4	n/a	0	0	n/a
August 5, 2012	13	8	n/a	0	0	n/a	13	3	n/a	0	0	n/a
August 12, 2012	15	8	n/a	2	2	n/a	13	11	n/a	0	0	n/a
August 19, 2012	24	8	n/a	1	1	n/a	23	17	n/a	0	0	n/a
August 26, 2012	12	7	0	3	1	0	9	6	0	0	0	0
September 2, 2012	35	3	12	11	0	6	24	3	6	2	0	0
September 9, 2012	12	8	n/a	3	0	n/a	9	0	n/a	0	0	n/a
September 16, 2012	6	8	n/a	0	0	n/a	6	5	n/a	0	0	n/a
September 23, 2012	17	8	n/a	6	0	n/a	11	6	n/a	0	0	n/a
September 30, 2012	7	8	n/a	0	0	n/a	10	2	n/a	0	0	n/a
October 7, 2012	3	8	n/a	0	0	n/a	3	3	n/a	0	0	n/a
October 14, 2012	14	8	n/a	2	0	n/a	13	3	n/a	0	0	n/a
October 21, 2012	0	8	n/a	0	0	n/a	0	0	n/a	0	0	n/a
October 28, 2012	0	8	n/a	0	0	n/a	0	0	n/a	0	0	n/a
November 4, 2012	0	8	n/a	0	0	n/a	0	0	n/a	0	0	n/a
November 11, 2012	0	8	n/a	0	0	n/a	0	0	n/a	0	0	n/a
November 18, 2012	0	8	n/a	0	0	n/a	0	0	n/a	0	0	n/a
November 25, 2012	0	8	n/a	0	0	n/a	0	0	n/a	0	0	n/a
December 2, 2012	0	8	n/a	0	0	n/a	0	0	n/a	0	0	n/a
December 9, 2012	0	8	n/a	0	0	n/a	0	0	n/a	0	0	n/a
December 16, 2012	0	8	n/a	0	0	n/a	0	0	n/a	0	0	n/a
December 23, 2012	0	8	n/a	0	0	n/a	0	0	n/a	0	0	n/a
<b>Total Rec Days</b>	<b>831</b>			<b>81</b>			<b>740</b>			<b>2</b>		
<b>Average per Week</b>	<b>16</b>			<b>2</b>			<b>14</b>			<b>0</b>		
<b>Total Non Peak</b>		<b>392</b>			<b>28</b>			<b>245</b>			<b>0</b>	
<b>Total Peak</b>			<b>36</b>			<b>6</b>			<b>30</b>			<b>0</b>

Total Peak Weekends		
	Total/Weekend	Avg/day
Memorial Day (Sat - Mon)	28	9.3
4th of July (4th, Sat and Sun)	10	3.3
Labor Day (Sat - Mon)	24	8

Total Non Peak Weekends	
Saturday and Sunday	665
Avg/per Day	7

Total Visitors 1654

**ATTACHMENT III**

**PUBLIC MEETING MINUTES, PRESENTATION,  
AND SIGN-IN SHEET**

**ATTACHMENT IV**

**LAKE LYNN RECREATION PLAN  
COMMENTS AND RESPONSES**