

# 2021 Recreation Plan Update

March 2021

## Lake Lynn Hydroelectric Project (FERC No. 2459)

Lake Lynn Generation, LLC  
2 Bethesda Metro Center, Suite 1330  
Bethesda, Maryland 20814



## TABLE OF CONTENTS

<b>1.0</b>	<b>INTRODUCTION.....</b>	<b>1</b>
1.1	Background.....	1
1.2	Project Description.....	1
<b>2.0</b>	<b>EXISTING PROJECT RECREATION SITES AND FACILITIES.....</b>	<b>1</b>
2.1	Tailrace Fishing Area.....	2
2.2	Cheat Lake Trail.....	2
2.3	Cheat Lake Park.....	2
2.4	Sunset Beach Marina Public Boat Launch.....	3
2.5	Wildlife and Nature Viewing Areas.....	3
<b>3.0</b>	<b>RECREATION SITE OPERATION AND MAINTENANCE.....</b>	<b>10</b>
<b>4.0</b>	<b>RECREATION USE MONITORING.....</b>	<b>10</b>
4.1	Public Recreation Use Methodology.....	10
4.2	Results.....	11
4.2.1	Recreation Use at Primary Recreation Sites.....	15
4.2.2	Recreation Use at Secondary Sites.....	16
4.3	Adequacy of Recreation Facilities.....	17
<b>5.0</b>	<b>PROJECT SPECIFIC ISSUES (ARTICLE 417).....</b>	<b>18</b>
<b>6.0</b>	<b>PROPOSED RECREATION PLAN AMENDMENTS.....</b>	<b>18</b>
<b>7.0</b>	<b>AGENCY CONSULTATION.....</b>	<b>19</b>

## **TABLES**

Table 2-1: Commission Approved Recreation Facilities at the Project .....	4
Table 2-2: Commission Approved Recreation Amenities at the Project .....	6
Table 4-1: Recreation Spot Count Dates, 2020.....	10
Table 4-2: Estimated Annual Use of Primary Sites * .....	11
Table 4-3: Estimated Use of Surveyed Sites by Season .....	12
Table 4-4: Estimated Recreation Types Observed During Limited Duration Spot Counts .....	14
Table 4-5: Capacity Utilization by Primary Recreation Site .....	15

## **APPENDICES**

Appendix A: 2021 Recreation Plan Update Comments and Responses and Documentation of Agency Consultation	
Appendix B: Recreation Site Photos	
Appendix C: Recreation Site Field Inventory Forms	

## ACRONYM LIST

ADA	Americans with Disabilities Act
Commission	Federal Energy Regulatory Commission or FERC
2021 Plan	2021 Recreation Plan Update – March 2021
FERC	Federal Energy Regulatory Commission or Commission
FOC	Friends of the Cheat
ft	feet
Lake Lynn	Lake Lynn Generation, LLC or Licensee
Licensee	Lake Lynn Generation, LLC or Lake Lynn
MRTC	Monongahela River Trails Conservancy Ltd.
NGVD	National Geodetic Vertical Datum
NVA	Nature Viewing Areas
PFBC	Pennsylvania Fish and Boat Commission
Project	Lake Lynn Hydroelectric Project (FERC No. 2459)
USFWS	U.S. Fish and Wildlife Service
WVDNR	West Virginia Division of Natural Resources

## 1.0 Introduction

### 1.1 Background

In accordance with Article 417 of the Federal Energy Regulatory Commission (FERC) License<sup>1</sup> for the Lake Lynn Hydroelectric Project (Project) (FERC No. 2459), as amended<sup>2</sup> in the FERC “Order Modifying and Approving Recreation Plan”, dated April 11, 1997, Lake Lynn Generation, LLC (Lake Lynn), as the Licensee for the Project, is required to file a Recreation Plan Update with FERC every three years. The Recreation Plan was updated on March 31, 2008, May 18, 2010, June 1, 2015, and on April 2, 2018.

The most recent Recreation Plan Update was filed with FERC on April 2, 2018 and was modified and approved by FERC by order dated August 10, 2018. FERC’s order modifying and approving the 2018 Recreation Plan Update requires Lake Lynn to file a Recreation Plan Update by March 31, 2021 in accordance with Article 417 that includes: (1) annual recreational use numbers collected in 2020; (2) a discussion of the adequacy of the Project recreation facilities to meet recreation demand; (3) a description of the methodology used to collect all recreational use data; (4) if there is a need for additional facilities, a discussion of how the licensee will address recreation needs during relicensing; and (5) documentation of agency consultation and agency comments on the update after it has been prepared and provided to the agencies.

This 2021 Recreation Plan Update (2021 Plan) includes an evaluation of facility recreation use data collected in 2020 and an inventory of the Project recreation sites and facilities that was conducted in early October 2020.

### 1.2 Project Description

The Project is located on the Cheat River, in Monongalia County, West Virginia near the City of Morgantown, and in Fayette County, Pennsylvania near the Borough of Point Marion, Pennsylvania. The Project currently operates under a license issued by FERC that expires November 30, 2024. The Project is operated as a dispatchable peaking hydroelectric facility with storage capability. The facility’s ponding capability varies by season and allows for peaking. The current FERC license requires that Lake Lynn operate the Project to maintain Cheat Lake between 868 and 870 ft National Geodetic Vertical Datum (NGVD) from May 1 through October 31, between 857 and 870 ft from November 1 through March 31, and between 863 ft and 870 ft from April 1 through April 30, each year.

## 2.0 Existing Project Recreation Sites and Facilities

Project recreation sites provide fishing, boating, nature viewing, picnicking, and hiking/biking opportunities. Existing Project recreation sites are described in the following subsections and summarized in Table 2-1. Table 2-2 provides specific details regarding recreation amenities

---

<sup>1</sup> Order Issuing New License issued December 27, 1994 (69 FERC ¶ 62,253)

<sup>2</sup> Article 417 was amended by ordering paragraph (G) of Order Modifying and Approving Recreation and Land Management Plan, issued April 11, 1997 (79 FERC ¶ 62,017).

provided at the Project recreation sites. Figure 2-1 depicts the locations of the Project recreation sites. Photos of the Project recreation sites are included in Appendix B and the field forms for the Project recreation site inventory are included in Appendix C.

## **2.1 Tailrace Fishing Area**

The Tailrace Fishing Area provides access to the Cheat River below Cheat Dam for fishing. The site consists of a parking area, a concrete fishing platform, and bank fishing access (see Table 2-2, Appendix B and Appendix C). The fishing platform is accessed from Lake Lynn Road.

Both the fishing platform and parking area are illuminated. A handicap accessible pedestrian ramp connects the parking area with the fishing platform. The fishing platform can accommodate approximately 20 anglers and has handrails constructed with barrier free cutouts to provide handicap accessibility. An existing roadway provides easy foot access from the parking lot to the riverbank. A portable toilet is provided at the site. To enhance public safety, visual and audible alarms are operated and maintained to provide sufficient notification of flow increases from the Project facility and to warn the public to exit the water.

## **2.2 Cheat Lake Trail**

The Cheat Lake Trail is a 4.5-mile hiking/biking trail that extends from a parking area near the Lake Lynn powerhouse (the Substation Parking Area) to its southern terminus at the Cheat Haven Nature Viewing Area (see Table 2-2, Appendix B and Appendix C). The trail can be accessed from the Substation Parking Area or from Cheat Lake Park (the Upper or Lower Parking Areas). The northern portion of the Cheat Lake Trail is approximately 1.4 miles long and extends from the Substation Parking Area to Cheat Lake Park. The Trail passes through Cheat Lake Park. The South Cheat Lake Trail begins at Cheat Lake Park. The southern-most 3.1 miles of the Trail is accessed through a gate at Mannings Run. The gate allows Lake Lynn to close the southern-most 3.1-mile section of the Trail at dusk during the recreation season and the winter months. Interpretive signs are installed at several historical sites along the Cheat Lake Trail. Additionally, there are mile-markers every half-mile along the length of the trail. Because of safety concerns, the Trail may be temporarily closed if snow and/or ice are present or other hazardous conditions exist. Signs are posted on the Morgan Run Bridge to inform hikers of any trail closures.

## **2.3 Cheat Lake Park**

Cheat Lake Park consists of an area of about 46 acres primarily situated on a peninsula between two embayments (Rubles Run and Morgan Run) of Cheat Lake. Recreation facilities at Cheat Lake Park include an upper picnic area, a shoreline picnic area, parking areas, a playground area, a car-top/winter boat launch, three restroom facilities, a security/maintenance station, day-use boat docks, a swimming beach, fishing platforms, and access to the Cheat Lake Trail (see Table 2-2, Appendix B and Appendix C). Cheat Lake Park is accessible from a gravel parking area (the Upper Parking Area). A second gravel parking area also provides overflow parking, if needed. A paved roadway provides access from the Upper Parking Area to the facilities along the shoreline of Cheat Lake. The roadway is wide enough to accommodate two-way traffic and pedestrians. A short-term and Americans with Disabilities Act (ADA) accessible parking area for the car-top/winter boat launch and loading/unloading area is located near the shoreline. This Lower Parking Area provides parking without time restrictions for the disabled.

The car-top/winter boat launch at Cheat Lake Park is available for use from November 1 through April 30. This boat launch provides access to Cheat Lake for those periods when the public boat launch at Sunset Beach Marina is unavailable due to lake levels below 865-ft NGVD.

A courtesy dock, ADA accessible at the normal recreational pool level of 868-ft to 870-ft, is available for car-top boat users. This courtesy dock is in the Rubles Run embayment. Another courtesy dock is located on the main body of Cheat Lake near the Morgan Run embayment.

Two timber bridge structures constructed over the Morgan Run and Rubles Run embayments provide access to the 4.5-mile Cheat Lake Trail along the Cheat Lake shoreline, additional picnic areas, and fishing access. The bridge structures at Rubles Run and Morgan Run both have a pavilion deck with picnic tables and a 200-foot-long fishing platform. Both bridges over the Rubles Run and Morgan Run embayments have a 13-foot clearance when Cheat Lake is at maximum depth to allow most boaters access to the embayments. Although the bridge structures are intended for pedestrians only, they can support emergency and maintenance vehicles weighing up to 10 tons.

Three restroom facilities are available at the park. An ADA accessible restroom facility is located at the Upper Picnic Area. A second ADA accessible restroom facility is located at the peninsula, near the children's playground, and provides office space for security and maintenance, a public telephone, and a water fountain. A third restroom facility is located between the Morgan and Manning Run embayments and provides a convenient location for boaters using the day-use boat docks. All restroom facilities have indoor lighting and a proper ventilation system.

A small swimming beach is located along the Cheat Lake Trail. This "swim at your own risk area" is approximately 200 feet long and 15 feet wide and is roped off for swimming. The swimming beach is a natural beach, vegetation has been removed and sand has been added to the area. The beach is located near the restroom facility. The swimming beach is open from dawn to dusk and is adjacent to a small picnic area with four picnic tables.

## **2.4 Sunset Beach Marina Public Boat Launch**

A free public boat launch and associated parking area are located at Sunset Beach Marina and provide public access to Cheat Lake (see Table 2-2, Appendix B and Appendix C). This Public Boat Launch is available year-round when the lake level is above 865-ft NGVD. Lake Lynn maintains the surface elevation of Cheat Lake at certain levels throughout the year, as described in Section 1.2.

During the recreation season, the lake level is maintained so that use of the boat launch is not affected by Project operations. During the winter months, if the lake level is drawn down to 857-ft NGVD for power generation, there could be shallow water in Cheat Lake near the Ices Ferry Bridge and the embayments, however, most boaters using Cheat Lake in the winter are typically familiar with these conditions and would avoid shallow areas. A winter boat launch is available for use from November 1 through March 31 at Cheat Lake Park. Lake Lynn provides lake elevation and water temperature information on the Cheat Lake website at <https://cheatlake.today/>.

## **2.5 Wildlife and Nature Viewing Areas**

In addition to the developed Project recreation sites, four parcels of Project lands have been designated as wildlife and nature viewing areas (NVAs). These areas are open for certain public

recreation uses and there are no plans to develop these areas in the future. These areas include the following:

- 40 acres between Morgan and Manning Run embayments;
- the 140-acre Cheat Haven Peninsula;
- 12-acre parcel across the reservoir from the Cheat Haven peninsula (accessible by boat only); and
- 25 acres at Tower Run.

Forty acres located between Morgan and Manning Run embayments is an undeveloped NVA.

The 140-acre Cheat Haven Peninsula NVA provides hikers on the South Cheat Lake Trail the opportunity to leave the Cheat Lake Trail and hike along the 1-mile trail through the woods. A bike rack is provided at the trailhead for trail users. A three-sided storm shelter is also on the South Cheat Lake Trail near the trailhead for the Cheat Haven NVA trail. A designated trail through the NVA was developed to reduce habitat destruction in the NVA.

A small NVA that is accessible by boat only is located on about 12 acres across the reservoir from the Cheat Haven peninsula.

The Tower Run area was identified in the original Recreation Plan as a hunting area. By order dated October 7, 1997, FERC approved the Hunting Area Management Plan and amended the Project Recreation and Land Management Plan. Due to the number of nearby property owners and the small size of the parcel, FERC prohibited hunting in this area. This NVA has Project signage and a small pull-off parking area for approximately 3 cars.

**Table 2-1: Commission Approved Recreation Facilities at the Project**

Recreation Site Name	Recreation Facilities
Tailrace Fishing Area	100-ft concrete handicap accessible fishing platform, bank fishing opportunities, gravel parking area for approximately 22 vehicle, portable toilet, trash receptacles
Cheat Lake Trail	4.5-mile hiking/biking trail (handicap accessible) consisting of northern and southern sections, parking at Substation Parking Area or Cheat Lake Park, bike rack, storm shelter, benches, interpretive historical signs, trash receptacle
Substation Parking Area	Gravel parking area for approximately 20 vehicles, steps to the Cheat Lake Trail
Cheat Lake Park	Winter/car-top boat ramp with courtesy dock, 2 courtesy docks, swimming beach, 14 picnic tables including 4 in picnic area next to the beach, 8 day-use boat docks, playground area, 2 restroom facilities, 9 benches, security/maintenance station, 2 200-ft long fishing platforms, 6 water fountains, access to the Cheat Lake Trail, interpretive historical signs
Cheat Lake Park Upper Parking Area	Gravel parking area for approximately 50 vehicles, trash receptacle
Cheat Lake Park Overflow Parking Area	Gravel parking area for approximately 30 vehicles
Cheat Lake Park Lower Parking Area	6 Americans with Disabilities Act (ADA) parking spaces
Cheat Lake Park Upper Picnic Area	Picnic loop with 29 drive-in picnic sites (each with parking for up to 2 vehicles) one of which includes handicapped accessible parking, 23 grills, 20 picnic tables, restroom building, 2 water fountains, 9 trash receptacles, parking lot with 11 parking spaces (of which 2 are ADA accessible)



Recreation Site Name	Recreation Facilities
Sunset Beach Marina Public Boat Launch	Public boat ramp, parking area for up to 85 vehicles with trailers, 2 portable toilets
Cheat Haven Peninsula Nature Viewing Area	Nature area, approximately 1.4-mile-long trail
Cheat Lake Park Nature Viewing Area	Nature viewing area
Nature Viewing Area across from Cheat Haven	Nature area accessible by boat only
Tower Run Nature Viewing Area	Pull-off parking for approximately 3 vehicles, nature area

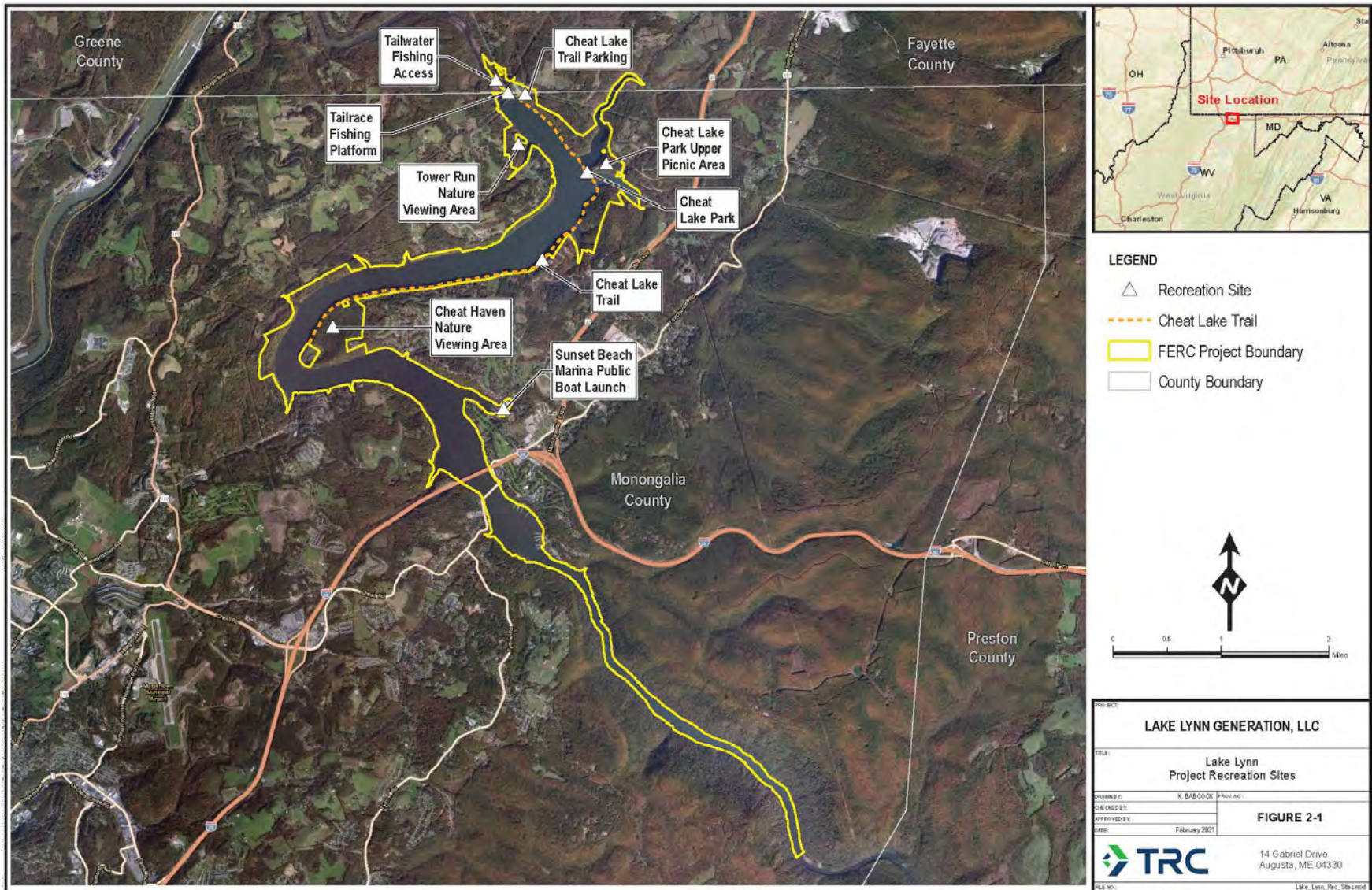
**Table 2-2: Commission Approved Recreation Amenities at the Project**

FERC Project No.	Development Name	Recreation Amenity Name	Recreation Amenity Type	Amenity Status	Latitude	Longitude	FERC Citation and Date	Notes
2459	Lake Lynn	Sunset Beach Marina Boat Launch	Public Boat Ramp	Constructed	39.6783553	-79.8582892	97 FERC ¶ 62,197 (12/5/2001)	
2459	Lake Lynn	Cheat Lake Trail South	Bench	Constructed	39.687408	-79.8919843	97 FERC ¶ 62,197 (12/5/2001)	Located at southern terminus of the trail
2459	Lake Lynn	Cheat Haven Nature Trail	Trail	Constructed	39.6884484	-79.8911941	97 FERC ¶ 62,197 (12/5/2001)	End of Cheat Haven Natural Trail near southern terminus of Cheat Lake Trail
2459	Lake Lynn	Cheat Haven Nature Viewing Area	Nature Viewing Area	Constructed	39.6893100	-79.8846700	97 FERC ¶ 62,197 (12/5/2001)	
2459	Lake Lynn	Cheat Lake Trail South	Storm Shelter and Bike Rack	Constructed	39.6929451	-79.8861185	97 FERC ¶ 62,197 (12/5/2001)	
2459	Lake Lynn	Cheat Haven Nature Trail	Trail	Constructed	39.6929502	-79.8860874	97 FERC ¶ 62,197 (12/5/2001)	Trailhead near storm shelter
2459	Lake Lynn	Cheat Lake Trail South	Bench	Constructed	39.6997168	-79.8495378	97 FERC ¶ 62,197 (12/5/2001)	
2459	Lake Lynn	Cheat Lake Trail South	Trail	Constructed	39.701901	-79.8465054	97 FERC ¶ 62,197 (12/5/2001)	Gated trailhead
2459	Lake Lynn	Cheat Lake Trail South	Viewpoint	Constructed	39.7020054	-79.8464871	97 FERC ¶ 62,197 (12/5/2001)	
2459	Lake Lynn	Cheat Lake Trail South	Bench	Constructed	39.701989	-79.8461322	97 FERC ¶ 62,197 (12/5/2001)	Located before gate to trail
2459	Lake Lynn	Cheat Lake Trail South	Bench	Constructed	39.703014	-79.844851	97 FERC ¶ 62,197 (12/5/2001)	Located south of picnic area and beach
2459	Lake Lynn	Cheat Lake Park Lower Picnic Area	Picnic Area	Constructed	39.7057931	-79.8438131	97 FERC ¶ 62,197 (12/5/2001)	Adjacent to beach
2459	Lake Lynn	Cheat Lake Park Beach	Beach	Constructed	39.7060597	-79.8431082	97 FERC ¶ 62,197 (12/5/2001)	
2459	Lake Lynn	Cheat Lake Trail	Cultural Resource Sign 4	Constructed	39.7057219	-79.8434283	97 FERC ¶ 62,197 (12/5/2001)	Signage about millstones
2459	Lake Lynn	Cheat Lake Trail	Cultural Resource Sign 3	Constructed	39.7062508	-79.8424690	97 FERC ¶ 62,197 (12/5/2001)	Signage about historic foundations
2459	Lake Lynn	Cheat Lake Park	Restroom Building	Constructed	39.7066170	-79.8421644	97 FERC ¶ 62,197 (12/5/2001)	Located near day-use boat docks
2459	Lake Lynn	Day Use Boat Dock 1	Boat Dock	Constructed	39.7069843	-79.8420758	97 FERC ¶ 62,197 (12/5/2001)	
2459	Lake Lynn	Day Use Boat Dock 2	Boat Dock	Constructed	39.7069457	-79.8421546	97 FERC ¶ 62,197 (12/5/2001)	
2459	Lake Lynn	Day Use Boat Dock 3	Boat Dock	Constructed	39.7068796	-79.8422025	97 FERC ¶ 62,197 (12/5/2001)	
2459	Lake Lynn	Day Use Boat Dock 4	Boat Dock	Constructed	39.7068373	-79.8422649	97 FERC ¶ 62,197 (12/5/2001)	
2459	Lake Lynn	Day Use Boat Dock 5	Boat Dock	Constructed	39.7067815	-79.8423241	97 FERC ¶ 62,197 (12/5/2001)	

FERC Project No.	Development Name	Recreation Amenity Name	Recreation Amenity Type	Amenity Status	Latitude	Longitude	FERC Citation and Date	Notes
2459	Lake Lynn	Day Use Boat Dock 6	Boat Dock	Constructed	39.7067361	-79.8423879	97 FERC ¶ 62,197 (12/5/2001)	
2459	Lake Lynn	Day Use Boat Dock 7	Boat Dock	Constructed	39.7066895	-79.8424397	97 FERC ¶ 62,197 (12/5/2001)	
2459	Lake Lynn	Day Use Boat Dock 8	Boat Dock	Constructed	39.7066895	-79.8424397	97 FERC ¶ 62,197 (12/5/2001)	
2459	Lake Lynn	Morgan Run Causeway Pavilion Deck	Deck and Picnic Table	Constructed	39.7086276	-79.8421256	97 FERC ¶ 62,197 (12/5/2001)	
2459	Lake Lynn	Morgan Run Fishing Platform	Fishing Pier	Constructed	39.7082037	-79.8416733	97 FERC ¶ 62,197 (12/5/2001)	
2459	Lake Lynn	Cheat Lake Park Courtesy Boat Dock	Boat Dock	Constructed	39.7092698	-79.8429610	97 FERC ¶ 62,197 (12/5/2001)	
2459	Lake Lynn	Cheat Lake Park	Picnic Table	Constructed	39.7094546	-79.8434828	97 FERC ¶ 62,197 (12/5/2001)	
2459	Lake Lynn	Cheat Lake Park	Picnic Table	Constructed	39.7094845	-79.843598	97 FERC ¶ 62,197 (12/5/2001)	
2459	Lake Lynn	Cheat Lake Park	Cultural Resource Sign 2	Constructed	39.7095353	-79.8436710	97 FERC ¶ 62,197 (12/5/2001)	Signage about Bruceton Railroad
2459	Lake Lynn	Cheat Lake Park	Playground	Constructed	39.7097151	-79.8435524	97 FERC ¶ 62,197 (12/5/2001)	
2459	Lake Lynn	Cheat Lake Park	Picnic Table	Constructed	39.7096669	-79.8434484	97 FERC ¶ 62,197 (12/5/2001)	
2459	Lake Lynn	Cheat Lake Park	Bench	Constructed	39.7097412	-79.8438414	97 FERC ¶ 62,197 (12/5/2001)	
2459	Lake Lynn	Cheat Lake Park	Restroom/Security Office	Constructed	39.709644	-79.843278	97 FERC ¶ 62,197 (12/5/2001)	
2459	Lake Lynn	Cheat Lake Park Lower Parking Area	Parking Area	Constructed	39.7096865	-79.8433459	97 FERC ¶ 62,197 (12/5/2001)	
2459	Lake Lynn	Cheat Lake Park Winter Boat Ramp/Car Top Boat Ramp	Boat Ramp	Constructed	39.7100543	-79.8438393	97 FERC ¶ 62,197 (12/5/2001)	
2459	Lake Lynn	Cheat Lake Park Courtesy Boat Dock	Boat Dock	Constructed	39.7103239	-79.8433635	97 FERC ¶ 62,197 (12/5/2001)	Located on Rubles Run embayment
2459	Lake Lynn	Rubles Run Fishing Platform	Fishing Pier	Constructed	39.7114969	-79.8444811	97 FERC ¶ 62,197 (12/5/2001)	
2459	Lake Lynn	Rubles Run Causeway Pavilion Deck	Deck and Picnic Table	Constructed	39.7110053	-79.8442133	97 FERC ¶ 62,197 (12/5/2001)	
2459	Lake Lynn	Cheat Lake Trail North	Trail	Constructed	39.7119939	-79.8450082	97 FERC ¶ 62,197 (12/5/2001)	Trailhead past Rubles Rin causeway
2459	Lake Lynn	Cheat Lake Trail	Cultural Resource Sign 1	Constructed	39.7137546	-79.8471367	97 FERC ¶ 62,197 (12/5/2001)	
2459	Lake Lynn	Cheat Lake Park Upper Parking Area	Parking Area	Constructed	39.7100066	-79.8419058	97 FERC ¶ 62,197 (12/5/2001)	

FERC Project No.	Development Name	Recreation Amenity Name	Recreation Amenity Type	Amenity Status	Latitude	Longitude	FERC Citation and Date	Notes
2459	Lake Lynn	Cheat Lake Park Overflow Parking	Parking Area	Constructed	39.7104320	-79.8403869	97 FERC ¶ 62,197 (12/5/2001)	
2459	Lake Lynn	Cheat Lake Park Upper Picnic Area	Parking Area	Constructed	39.710833	-79.839958	97 FERC ¶ 62,197 (12/5/2001)	
2459	Lake Lynn	Cheat Lake Park Upper Picnic Area	Restroom	Constructed	39.710989	-79.839894	97 FERC ¶ 62,197 (12/5/2001)	
2459	Lake Lynn	Cheat Lake Park Upper Picnic Area	Picnic Area Loop	Constructed	39.7116880	-79.8387755	97 FERC ¶ 62,197 (12/5/2001)	
2459	Lake Lynn	Substation Parking Area	Parking Area	Constructed	39.7205600	-79.8537465	97 FERC ¶ 62,197 (12/5/2001)	
2459	Lake Lynn	Cheat Lake Trail	Trailhead	Constructed	39.7200832	-79.8542142	97 FERC ¶ 62,197 (12/5/2001)	Steps from parking area to trail
2459	Lake Lynn	Tailrace Fishing Area	Parking Area	Constructed	39.7215442	-79.8574737	97 FERC ¶ 62,197 (12/5/2001)	
2459	Lake Lynn	Tailrace Fishing Area	Concrete Fishing Platform	Constructed	39.7206322	-79.8567070	97 FERC ¶ 62,197 (12/5/2001)	
2459	Lake Lynn	Tailrace Fishing Area	Portable Toilet	Constructed	39.721386	-79.857458	97 FERC ¶ 62,197 (12/5/2001)	
2459	Lake Lynn	Tailrace Unimproved Access Area	Unimproved Tailrace Fishing Access	Constructed	39.7217426	-79.8577291	97 FERC ¶ 62,197 (12/5/2001)	
2459	Lake Lynn	Tower Run Nature Viewing Area	Nature Viewing Area	Constructed	39.7123015	-79.8553553	97 FERC ¶ 62,197 (12/5/2001)	

Figure 2-1: Lake Lynn Project Recreation Sites





### 3.0 Recreation Site Operation and Maintenance

Lake Lynn currently contracts with a private company to provide security patrols and operation and maintenance activities at the Project recreation sites. In accordance with the FERC-approved 2018 Recreation Plan Update, Lake Lynn provides security personnel patrol at the Project's recreation sites during daylight hours on weekends and holidays from Memorial Day weekend through Labor Day.

### 4.0 Recreation Use Monitoring

#### 4.1 Public Recreation Use Methodology

Lake Lynn conducted a recreation assessment in 2020 to assess the level of use at Project recreation sites. This recreation assessment was included as part of the Recreation Plan Update in the Study Plan developed in 2020 in consultation with stakeholders. Although a detailed methodology was not included in the Study Plan, Lake Lynn did not receive any comments about the methodology used for collecting recreation use data as part of the Recreation Plan Update. Data collection objectives included the determination of the amount of recreation use and demand at Project recreation sites. The data regarding the type and amount of use was obtained by spot counts conducted at recreation sites on random weekdays, weekend days, and holiday weekends (Memorial Day weekend, Independence Day weekend, and Labor Day weekend) and Sunset Beach Marina data. Spot counts were conducted on 40 days at each of the different recreation sites, with a total of 560 spot counts made. Spot counts are “snapshots” of recreation use at the time the site is visited. Table 4-1 presents the dates on which spot counts were made.

**Table 4-1: Recreation Spot Count Dates, 2020**

Season	Season Dates	Survey Dates
Winter	January 1, 2020 through March 31, 2020 and December 1, 2020 through December 31, 2020	January 26, February 9, March 7, December 13, December 19, December 22, December 30
Spring	April 1, 2020 through May 22, 2020	April 23, April 24, May 15, May 16
Summer	May 23, 2020 through September 7, 2020	May 23, May 28, May 31, June 12, June 16, June 20, June 28, July 3, July 8, July 12, July 26, July 27, August 9, August 11, August 16, August 17, September 5
Fall	September 8, 2020 through November 30, 2020	September 19, September 23, September 25, September 27, October 4, October 8, October 13, October 17, November 7, November 13, November 15, November 24

Note: Survey dates in March and April were limited by stay-at-home orders related to the COVID-19 pandemic.

Spot counts were conducted at parking locations associated with the recreation sites (primary sites) and at other specific recreation sites (secondary sites). The assessment determined the type and amount of use at primary sites in terms of recreation days, with a recreation day being defined as each visit by a person to a development for recreational purposes during any portion

of a 24-hour period.<sup>3</sup> The capacity use at primary recreation sites, which were defined as sites with on-site parking, was estimated based on a comparison of total parking available against typical current use of parking lots during weekends during the peak season. For both primary and secondary recreation sites, the seasonal use patterns and recreation activities were determined.

## 4.2 Results

Based on data collected in 2020, the total annual recreation use of the monitored recreation sites at the Project was estimated to be 143,981 recreation days (Table 4-2).

It is important to note that most of the 2020 data collection was conducted during the COVID-19 Pandemic. In response to state Executive Orders, Emergency Orders, or Department of Health advisories urging individuals to stay home and minimize the spread of COVID-19, Eagle Creek developed a policy for all its recreation sites and facilities during the pandemic. This policy included the removal of temporary toilets and the closure of permanent toilet facilities and certain other facilities.

Outdoor recreation in the United States has seen significant impacts from COVID-19 and its related lockdowns and continuing restrictions. Overall, participation in outdoor recreation has increased, despite the closure of various facilities and amenities. The increase in use has been coupled with a shift in use patterns and in recreational users. Through its surveys, the Outdoor Industry Association found that day hiking participation rates in April, May, and June of 2020 increased more than 8 percent over the same period in 2019. Additionally, the organization found that running, bicycling, day hiking, bird watching and camping participation by urban respondents increased noticeably since March shutdowns.<sup>4</sup>

**Table 4-2: Estimated Annual Use of Primary Sites \***

Recreation Site	Estimated Annual Use (2020)
Tailrace Fishing Area	5,156
Substation Parking Area	3,974
Cheat Lake Park Upper Picnic Area	723
Cheat Lake Park Upper Parking Area	89,748
Cheat Lake Park Lower Parking Area	13,524
Sunset Beach Marina	30,856
<b>Total Annual Use</b>	<b>143,981</b>

\* Primary sites are those locations with on-site parking or are designated parking facilities. Use at these sites is based on counts of recreationists and parked vehicles. Therefore, these counts include those who have used the on-site parking but may be recreating in other areas of the Park.

<sup>3</sup> Recreation use was not calculated for secondary sites (those without on-site parking). Recreationists who visit secondary sites were counted with the primary site at which they have parked.

<sup>4</sup> See: <https://outdoorindustry.org/article/increase-outdoor-activities-due-covid-19/>

Table 4-3 provides a breakdown of estimated 2020 use by season. As shown, approximately half of the recreation use occurred during the summer with 53 percent of recreation days. Recreation use was lowest in winter (7%), with moderate use in spring (25%) and fall (14%).

**Table 4-3: Estimated Use of Surveyed Sites by Season**

Recreation Site	Spring Use %	Summer Use %	Fall Use %	Winter Use %
<b>Estimated Use at Primary Sites<sup>1</sup></b>				
Tailrace Fishing Area	23%	49%	15%	12%
Substation Parking Area	44%	37%	12%	7%
Cheat Lake Park Upper Picnic Area	0%	100%	0%	0%
Cheat Lake Park Upper Parking Area	29%	50%	14%	7%
Cheat Lake Park Lower Parking Area	28%	42%	16%	14%
Sunset Beach Marina	11%	71%	15%	3%
<b>Total Annual Use</b>	<b>25%</b>	<b>53%</b>	<b>14%</b>	<b>7%</b>
<b>Estimated Use at Secondary Sites<sup>2</sup></b>				
Cheat Lake Park Day Use Boat Dock	18%	45%	15%	22%
Cheat Lake Park Lower Picnic Area	30%	49%	20%	1%
Cheat Lake Trail North	23%	41%	17%	18%
Cheat Lake Trail South	38%	32%	20%	10%
Cheat Lake Park Playground	0%	8%	46%	46%
Cheat Lake Park Beach	10%	77%	12%	1%
Cheat Lake Winter Boat Launch	14%	63%	20%	3%

Note: Percentages of estimated use by season at each recreation site may not sum to 100% due to rounding.

<sup>1</sup>Primary sites are those locations with on-site parking or are designated parking facilities. Use at these sites is based on counts of recreationists and parked vehicles. Therefore, these percentages include those who have used the on-site parking but may be recreating in other areas of the Park.

<sup>2</sup>Secondary sites are those locations that do not have on-site parking, but rather are accessed from parking areas in other sections of the Park. Recreationists using these sites are included in the use estimates of the primary sites.

Table 4-4 shows a breakdown of recreation use observed during spot counts by activity type for each recreation site. As shown, recreationists participated in a wide variety of activities at the Lake Lynn Project. Project-wide walking, hiking, and jogging was found to be the most popular recreation activity observed at the many of the Lake Lynn Project recreation sites. Platform fishing was popular at the Tailrace Fishing Area (83%) and the Day Use Boat Dock (33%). Passive recreation, which includes sightseeing, shoreline relaxation, bird watching, and photography, was popular at the Beach (59%), the Day Use Boat Dock (36%), the Lower Picnic Area (35%), and Lower Parking Area (26%). Recreationists also enjoyed motor boating (87% at Sunset Beach Marina), spending time at the playground (85% at the Playground), non-motor boating (51% at the Winter Boat Launch), picnicking (50% at the Lower Picnic Area), and swimming (30% at the Beach).

In addition to independent recreation captured during the spot counts, organized fishing tournaments also occur at Cheat Lake. According to West Virginia Division of Natural Resources (WVDNR), one tournament that offered a purse was held at Cheat Lake during 2020. Additional



tournaments for points may have been held as well but would not have been recorded by WVDNR. The website [www.americanfishingtournaments.com](http://www.americanfishingtournaments.com) lists 9 tournaments for Cheat Lake in 2020.<sup>5</sup> Cheat Lake is typically host to a number of fishing tournaments during the year and the number of fishing tournaments in 2020 may have been impacted by the COVID-19 pandemic.

In addition to determining the type and amount of use at each of the primary recreation sites, the degree to which each recreation site had the capacity to sustain the recreation activity occurring at a site was estimated. Table 4-5 provides a breakdown of percent capacity utilized for each primary site. Percent capacity was determined by the available amount of parking at each site versus the average number of parking spaces that were occupied during surveys during each site's peak recreation season.

---

<sup>5</sup> Note that two tournaments are listed twice on the website. Post-tournament standings were posted online for one of the Tri-State Bass Circuit tournament held on May 17, 2020. These standings indicate 21 anglers participated in the tournament. (See: <http://tristatebasscircuit.com/standings.php>). Country Roads Bassmasters tournament on August 1, 2020 was limited to 25 anglers (from post on organization's Facebook page). Outcast Bass Club's tournament on October 18, 2020 consisted of 10 anglers (from post on organization's Facebook page). Standings for 2020 in the Cheat Lake Anglers Bass Club were also published online. These standings indicate a total of 24 participants. (See: <http://www.cheatlakeanglersbassclub.com/overall-standings-ytd-2020.html>)

**Table 4-4: Estimated Recreation Types Observed During Limited Duration Spot Counts**

Recreation Site	Motorboat	Non-Motorboat	Platform Fishing	Bank Fishing	Boat Fishing	Picnic	Swim	Walk/Hike/Jog	Bike	Play-ground	Passive Recreation <sup>1</sup>	Other Recreation Use
<b>Use Type at Primary Sites<sup>2</sup></b>												
Tailrace Fishing Area	NA	NA	<b>83%</b>	10%	NA	2%	NA	NA	NA	NA	5%	0%
Substation Parking Area	NA	NA	NA	NA	NA	NA	NA	<b>100%</b>	0%	NA	0%	0%
Cheat Lake Park Upper Picnic Area	NA	NA	NA	NA	NA	NA	NA	<b>100%</b>	0%	NA	0%	0%
Cheat Lake Park Upper Parking Area	NA	NA	NA	NA	NA	NA	NA	<b>90%</b>	2%	NA	6%	1%
Cheat Lake Park Lower Parking Area	NA	NA	NA	NA	NA	4%	NA	<b>59%</b>	4%	NA	26%	7%
Sunset Beach Marina	<b>87%</b>	3%	NA	1%	None observed	NA	NA	4%	NA	NA	1%	5%
<b>Use Type at Secondary Sites<sup>3</sup></b>												
Cheat Lake Park Day Use Boat Dock	9%	9%	33%	NA	0%	11%	1%	NA	NA	NA	<b>36%</b>	0%
Cheat Lake Park Lower Picnic Area	NA	NA	NA	6%	NA	<b>50%</b>	NA	0%	9%	NA	35%	0%
Cheat Lake Trail North	NA	NA	1%	3%	NA	3%	1%	<b>77%</b>	10%	NA	5%	0%
Cheat Lake Trail South	NA	NA	3%	5%	NA	5%	1%	<b>75%</b>	5%	NA	6%	0%
Cheat Lake Park Playground	NA	NA	NA	NA	NA	NA	NA	NA	NA	<b>85%</b>	15%	0%
Cheat Lake Park Beach	NA	NA	NA	NA	NA	NA	30%	11%	NA	NA	<b>59%</b>	0%
Cheat Lake Winter Boat Launch	12%	<b>51%</b>	3%	NA	0%	3%	5%	6%	NA	NA	17%	3%

Note: Percentages of estimated recreation type at each recreation site may not sum to 100% due to rounding. The most popular activity for the site is shown in **bold**. Not all recreation activities are available at each site. NA donates that the activity is Not Available at the recreation site.

<sup>1</sup>Passive recreation includes sightseeing, shoreline relaxation, birding, and photography.

<sup>2</sup>Primary sites are those locations with on-site parking or are designated parking facilities.

<sup>3</sup>Secondary sites are those locations that do not have on-site parking, but rather are accessed from parking areas in other sections of the Park.

**Table 4-5: Capacity Utilization by Primary Recreation Site**

Site	Parking Spaces	Maximum Utilization Observed	Percent Capacity Utilized, Weekends, Peak Season Utilized	Peak Season
Tailrace Fishing Area	22	4	9%	summer
Substation Parking Area	20	4	20%	spring
Cheat Lake Park Upper Picnic Area	64	5	8%	summer
Cheat Lake Park Upper Parking Area	50	80	11%	summer
Cheat Lake Park Lower Parking Area	6	12	76%	summer
Sunset Beach Marina	85*	309	65%	summer

\*The adjacent restaurant parking area accommodates approximately 25 vehicles. These parking spaces, and the related use, are not included in this table.

#### **4.2.1 Recreation Use at Primary Recreation Sites**

**Tailrace Fishing Area:** Annual recreation use at the Tailrace Fishing Area was estimated to be 5,156 recreation days in 2020. The site is estimated to be utilized at about 9 percent of capacity on summer weekends. The site was used most heavily in the summer (49%). The spring (23%) fall (15%), and winter (12%) seasons saw more moderate use. Fishing from platforms (83%) was the most popular recreation use observed during spot counts at the recreation site followed by fishing from banks (10%). Passive recreation (5%) and picnicking were also observed (2%).

**Substation Parking Area:** In 2020, there were an estimated 3,974 recreation days associated with the Substation Parking Area. This parking area is located at the northern terminus of the Cheat Lake Trail North. Recreationists also visit other areas of the Park and the Cheat Lake Trail South from this parking area. The site was estimated to be utilized at approximately 20 percent of capacity on weekends in the spring (peak season). The spring (44%) and summer (35%) saw most of the use at the Substation Parking Area, with light use in the fall (12%) and winter (7%). All the recreation use observed during spot counts at the Substation Parking Area was for walking, hiking, and jogging (100% of use).

**Cheat Lake Park Upper Picnic Area:** In 2020, annual recreation use at the Cheat Lake Upper Picnic Area was estimated to be 723 recreation days. The Upper Picnic Area was closed for the majority of 2020. The site was utilized at 8 percent of capacity on the one summer weekend when use was observed. Use at the site was only observed in the summer (100%). Walking, hiking, and jogging were the only activities observed at the site.

**Cheat Lake Park Upper Parking Area:** There were an estimated 89,748 recreation days spent in 2020 at recreation facilities associated with the Cheat Lake Upper Parking Area. This site was the busiest recreation area at the Project. The parking area supports many of the Cheat Lake Park recreation sites. The site is utilized at roughly 11 percent capacity on weekends in the summer (peak season). Half of the use (50%) at the Upper Parking Area occurred in the summer, with 29 percent of use in the spring. Use was light in the fall (14%) and winter (7%). Walking, hiking, and jogging accounted for 90 percent of the observed use during spot counts. Shoreline recreation (6%), biking (2%), and “other recreation” (1%) were also observed at this site.

**Cheat Lake Park Lower Parking Area:** Annual recreation use associated with the Cheat Lake Lower Parking Area was estimated to be 13,524 recreation days. The parking area was utilized at 76 percent capacity during the summer weekends in 2020. Summer (42%) and spring (28%)

were the most popular seasons at the Lower Parking Area. Use in the summer was estimated to be 16 percent, with winter use at 14 percent. Walking, hiking, and jogging were the most popular uses observed during spot counts at this area and accounted for 59 percent of annual use. Passive recreation (26%) was also popular, with “other recreation” (7%), biking (4%), and picnicking (4%) also observed.

**Sunset Beach Marina:** Annual recreation use at the Sunset Beach Marina was estimated to be 30,856 recreation days in 2020. The site is utilized at approximately 65 percent capacity on summer weekends (peak season).<sup>6</sup> On peak weekends, capacity is often exceeded. The majority of the recreation use (71%) at Sunset Beach Marina occurred in the summer, with the fall (15%) the second most popular season. Use was light in the spring (11%) and winter (3%). Motor boating was the dominant recreation activity observed during spot counts at the marina (87%). Other recreation activities observed included walking, hiking, and jogging (4%), non-motor boating (3%), passive recreation (1%), fishing from banks (1%), and “other recreation” (5%).

#### **4.2.2 Recreation Use at Secondary Sites**

**Cheat Lake Park Day Use Boat Docks:** Recreationists at the boat docks may arrive at the docks by boat and then visit other areas of the park or may have come from other areas within Cheat Lake Park to visit the Day Use Boat Docks. The summer is the most popular recreation time (45%), followed by winter (22%), spring (18%), and fall (15%). The most popular recreation activities observed during spot counts in the area were passive recreation (36%), platform fishing (33%), picnicking (11%), motor boating (9%), non-motor boating (9%), and swimming (1%).

**Cheat Lake Park Lower Picnic Area:** Recreationists visiting the Lower Picnic Area may park at the Upper or Lower Parking Areas or the Substation Parking Area or may arrive by boat. Summer use at the Lower Picnic Area was 41 percent, with spring use at 23 percent, winter use at 18 percent, and fall use at 17 percent. Picnicking was the most commonly observed recreation activity at the site, with 50 percent of use. Passive recreation was also popular (35%) based on spot count observations. Biking (9%), bank fishing (6%), and bird watching (1%) were also observed.

**Cheat Lake Trail North:** Recreationists at Cheat Lake Trail North typically use the Substation Parking Area and are also included in the recreation use count for that site. Summer was the most popular time at the trail, with 41 percent of the use. Spring use was 23 percent, with winter at 18 percent and fall at 17 percent. The most popular recreation activities observed during spot counts at Cheat Lake Trail North were walking, hiking, and jogging (77%), followed by biking (10%). Several other recreational activities were also observed: picnicking (3%), passive relaxation (5%), bank fishing (3%), bird watching (2%), swimming (1%), non-motor boating (1%), and platform fishing (1%).

**Cheat Lake Trail South:** Recreationists at Cheat Lake Trail South may use the Upper or Lower Parking Areas or the Substation Parking Area. A portion of the trail was closed until late August 2020; however, the open portion of the trail (beyond the beach) saw its heaviest use in the spring (38%), with strong use in the summer (32%) as well. The fall (20%) and winter experienced lighter use. The most popular recreation activities observed during spot counts included walking, hiking,

---

<sup>6</sup> The area sees additional use associated with the adjacent restaurant.

and jogging (75%). Passive recreation (6%), bank fishing (5%), picnicking (5%), biking (5%), platform fishing (3%), and swimming (1%) were also observed.

**Cheat Lake Park Playground:** Playground users typically use the Upper or Lower Parking Areas, as well as the Substation Parking Area. Recreationists may have also accessed the Park via boat. The playground was closed for much of the spring and summer recreation seasons due to the COVID-19 pandemic. As a result, fall (46%) and winter (46%) were the most popular seasons at the site, with no use recorded in the spring and only 8 percent of the use observed in the summer. The most popular recreational activities observed during spot counts were playground use (85%) and passive recreation (15%).

**Cheat Lake Park Beach:** Parking for the beach is available at the Upper and Lower Parking Areas. Beachgoers may have also parked at the Substation Parking Area or arrived at the Park via boat. Despite being closed during the initial part of summer due to the COVID-19 pandemic, summer was the dominant season with 77 percent of total use at the site. Fall (12%), spring (10%), and winter (1%) saw light use. Passive recreation (59%) and swimming (30%) were the most popular activities observed during spot counts at the Beach, with walking/hiking/jogging (11%) also observed.

**Cheat Lake Park Winter Boat Launch:** Recreationists at the Winter Boat Launch typically use the Upper or Lower Parking Areas. The Winter Boat Launch experienced its lightest use in the winter, with only 3 percent of use occurring then. The majority of the use (63%) occurred in the summer, with light use in the fall (20%) and spring (14%). Non-motor boating (51%) was the most popular activity observed during spot counts at the site. Recreationists were also observed participating in passive recreation (17%), motor boating (12%), walking/hiking/jogging (6%), swimming (5%), platform fishing (3%), picnicking (3%), and “other recreation” (3%).

### 4.3 Adequacy of Recreation Facilities

As discussed in Section 4.2, the degree to which each Project recreation site had the capacity to sustain the recreation activity occurring at a site was estimated. Table 4-5 provides a breakdown of percent capacity utilized which was determined by the available amount of parking at each site versus the average number of parking spaces that were occupied during surveys during weekends during each site’s peak recreation season. Most of the Project recreation facilities continue to be utilized at less than 50 percent of capacity. The Cheat Lake Park Lower Parking Area (76%) and Sunset Beach Marina (65%) were both over 50 percent. Lake Lynn is working to address the parking issues that occur at the Sunset Beach Marina on certain peak weekends. The Cheat Lake Park Lower Parking Area provides ADA parking and temporary unloading/loading parking. Nothing in the recreation use data collected in 2020 suggests any significant changes in recreation facility capacity. Based on the recreation site inventory, review of the available facilities, annual use numbers generated in 2020 and the estimated capacity utilization rates, the existing facilities, as operated, are adequate to meet the current demonstrated demand for recreation use at the Project and comply with the Recreation and Land Management Plan approved by FERC on June 26, 1995 and amended on April 11, 1997, March 31, 2008, and May 18, 2010.

## 5.0 Project Specific Issues (Article 417)

Article 417 of the FERC License requires that the Recreation Plan Update consider Project-specific issues. FERC's order modifying and approving the 2018 Recreation Plan Update did not include any issues or conclusions that need to be addressed as part of this 2021 Plan.

## 6.0 Proposed Recreation Plan Amendments

Lake Lynn is not proposing any new recreation sites, facilities, or amenities in this 2021 Plan. As discussed in Section 4.2, the Project recreation facilities continue to be utilized at less than 50 percent of capacity except for the Cheat Lake Park Lower Parking Area and Sunset Beach Marina. Lake Lynn is working to address the parking issues that have been observed at Sunset Beach Marina on certain peak weekends. Based on the recreation site inventory, review of the available facilities, annual use numbers generated in 2020 and the estimated capacity utilization rates, the existing facilities, as operated, are adequate to meet the current demonstrated demand for recreation use at the Project.

The FERC license for the Project expires on November 30, 2024. The relicensing process for the Project was initiated in 2019 and will continue through 2022. Since the existing FERC License expires in November 2024, Lake Lynn proposes to make this 2021 Plan update the final update under the existing FERC license. During relicensing, agencies and stakeholders have an opportunity to participate in the process and provide input on resource concerns, including those related to recreation resources. The Licensee developed a Study Plan in 2020 that included an assessment of recreation measures requested along with study requests. The report for this assessment is being finalized and will be provided to stakeholders for review. The Licensee will submit proposed measures, including recreation measures, for the new license in its Draft License Application, which is due in early 2022, and Final License Application due in November 2022. The Licensee anticipates the development of a new Recreation Management Plan under a new FERC license that will address recreation needs under a new license. In its comments on the draft Recreation Plan, WVDNR concurs with the Licensee in affirming that this would be the final recreation plan update under the current license.

Lake Lynn is also proposing to remove the fish cleaning station at Cheat Lake Park. The station is consistently being misused and vandalized, requiring additional maintenance, and is not being used for its intended purpose. Security cameras or increasing security patrols would be costly and security patrols are currently being provided at this area during the daylight hours during the summer recreation season. No use at the station was observed during recreation spot counts in 2020. In its comments on the draft Recreation Plan, WVDNR supports the removal of the station due to underutilization and no other stakeholders have objected to its removal.

In summary, Lake Lynn proposes the following amendments to the Recreation Plan:

1. Lake Lynn proposes that this is the final update of the Recreation Plan under the current FERC license.
2. Lake Lynn proposes to remove the fish cleaning station at Cheat Lake Park.

## 7.0 Agency Consultation

On February 23, 2021, Lake Lynn distributed a draft 2021 Recreation Plan Update for review and comment. Lake Lynn provided a 30-day comment period for all parties to comment on the draft Recreation Plan. Lake Lynn met with WVDNR, Pennsylvania Fish and Boat Commission (PFBC), and U.S. Fish and Wildlife Service (USFWS) via MS Teams on March 22, 2021. Lake Lynn met with Cheat Lake Environment & Recreation Association (CLEAR) via MS Teams on March 9, 2021, with a follow-up site visit on March 16, 2021 to discuss operation and maintenance concerns.

Appendix A includes a summary of comments received on the draft Recreation Plan and Lake Lynn's responses to comments along with descriptions of how comments are accommodated. Attachment A also includes copies of the comments received, in chronological order, and documentation of agency consultation.

## **APPENDIX A**

### **2021 RECREATION PLAN UPDATE COMMENTS AND RESPONSES AND DOCUMENTATION OF AGENCY CONSULTATION**



**Comment and Response Summary on  
Lake Lynn Hydroelectric Project (FERC No. 2459) Draft 2021 Recreation Plan Update**

<b>Agency / Stakeholder</b>	<b>Date</b>	<b>Comment</b>	<b>Response</b>
Monongahela River Trails Conservancy Ltd. (MRTC)	3/23/21	MRTC would like to see improvements to these recreational opportunities be included in this recreation plan as part of the re-licensing process: To have the entire 4.5-mile Cheat Lake Trail open and accessible to the public all year long. The gate on the south end should be removed or simply remain open and unlocked at night. This would lessen the work of your maintenance crew and provide access to trail users. Please make this recommendation to FERC in this recreation plan	The Licensee is required by FERC to close the South Cheat Lake Trail at night in accordance with the Trail Management Plan filed with FERC on October 14, 1997 and approved by FERC on March 2, 1998. This Plan was required by FERC for the Cheat Lake Trail to address concerns of private property owners related to trespass and vandalism that they anticipated once the trail was constructed.
MRTC	3/23/21	MRTC would like to see improvements to these recreational opportunities be included in this recreation plan as part of the re-licensing process: To plan and build a connection of the Cheat Lake Trail to the Sheepskin Trail at the north end of the 4.5-mile Cheat Lake Trail. This involves opening the gate at the north end of trail and working with other stakeholders to build new trail on Lake Lynn Generation property to link into the Sheepskin Trail corridor. The Sheepskin Trail is not yet built to the Cheat Lake Trail but we anticipate it will be in the next 5-8 years.	The Licensee will continue to work with Interested stakeholders, outside of the Recreation Plan, to allow a connection of the Sheepskin Trail to the Cheat Lake Trail.  In response to stakeholder requests for relicensing studies, the Licensee developed a Study Plan in 2020 for a Recreation Enhancement and Feasibility Assessment. The study report is currently being finalized and will be distributed for stakeholder review. The study assessed connecting the two trails.
MRTC	3/23/21	MRTC would like to see improvements to these recreational opportunities be included in this recreation plan as part of the re-licensing process: To extend the Cheat Lake Trail south on Lake Lynn Generation property and in doing so, open more area to hiking, biking, birding, and fishing.	In response to stakeholder requests for relicensing studies, the Licensee developed a Study Plan in 2020 for a Recreation Enhancement and Feasibility Assessment. The study report is currently being finalized and will be distributed for stakeholder review. The study assessed extending the trail to the south.

MRTC	3/23/21	<p>MRTC would like to see improvements to these recreational opportunities be included in this recreation plan as part of the re-licensing process:          To improve recreational promotion of the Cheat Lake recreation area by hiring on-site recreation staff, by improving public communication (website, social media, phone), taking down old signs that were a part of the trail repair, putting up a directional sign at the path that leads to the housing development, and by creating a process for holding events on the Cheat Lake Trail such as walks and runs.</p>	<p>The Licensee's maintenance and security contractor is on-site during daylight hours on weekends and holidays from Memorial Day weekend through Labor Day in accordance with the 2018 Recreation Plan Update. The Licensee's contractor is in the process of preparing the recreation sites for the upcoming recreation season.</p>
Mountaineer Chapter of the National Audubon Society	3/24/21	<p>Plans need to include a commitment to facilitate an at-grade connection to the Sheepskin Trail.</p>	<p>The Licensee will continue to work with interested stakeholders, outside of the Recreation Plan, to allow a connection of the Sheepskin Trail to the Cheat Lake Trail.</p> <p>In response to stakeholder requests for relicensing studies, the Licensee developed a Study Plan in 2020 for a Recreation Enhancement and Feasibility Assessment. The study report is currently being finalized and will be distributed for stakeholder review. The study assessed connecting the two trails.</p>
Mountaineer Chapter of the National Audubon Society	3/24/21	<p>We also believe that the entire Cheat Lake Trail should be open at all times. There should be no closed, locked gate for the Cheat Lake Trail south. Any gates should be left open, and the trail should always be accessible to bicycles and foot traffic all year long and all day long.</p>	<p>The Licensee is required by FERC to close the South Cheat Lake Trail at night in accordance with the Trail Management Plan filed with FERC on October 14, 1997 and approved by FERC on March 2, 1998. This Plan was required by FERC for the Cheat Lake Trail to address concerns of private property owners related to trespass and vandalism that they anticipated once the trail was constructed.</p>

WVDNR	3/24/21	Cheat Lake Park – courtesy dock located on the main body of Cheat Lake near Morgan Run embayment is dilapidated and unsafe and in need of repairs. WVDNR requests that the dock be repaired as soon as possible.	The Licensee met with stakeholders on-site on March 16, 2021. The Licensee is planning to make the dock more stable with less side-to-side movement by adding stabilization poles on each section of dock. A handrail will also be added to one side of the dock. The improvements will be made once materials are received.
WVDNR	3/24/21	WVDNR questions some of the results of the study, specifically related to recreation activity percentages.	A follow-up email clarification and a phone call on 3/24/21 was conducted to address questions WVDNR had related to the recreation activity characterization. Section 4.0 has been revised to include additional information on methodology and to further clarify the results.
WVDNR	3/24/21	WVDNR concurs with the Licensee in affirming that this would be the final recreation plan update under the current license.	Comment noted.
WVDNR	3/24/21	WVDNR supports the removal of the fish cleaning station due to its underutilization.	Comment noted.
WVDNR	3/24/21	WVDNR recommends that the courtesy dock located at the winter boat launch at Cheat Lake Park be repaired as soon as possible.	The Licensee met with stakeholders on-site on March 16, 2021. The Licensee is planning to make the dock more stable with less side-to-side movement by adding stabilization poles on each section of dock. A handrail will also be added to one side of the dock. The improvements will be made once materials are received.
WVDNR	3/24/21	It sounds like the concern/issue is the methodology, since people were not specifically interviewed but your surveyor simply recorded what they thought/observed people doing, which may have contributed to an underrepresentation of certain activities.	A follow-up email clarification and a phone call on 3/24/21 was conducted to address questions WVDNR had related to the recreation activity characterization. Section 4.0 has been revised to include additional information on methodology and to further clarify the results.

Friends of the Cheat (FOC)	3/24/21	It would be ideal for the northern end of the Cheat Lake Trail be extended along the original rail grade to meet up with Lake Lynn Rd / Bunker Hill Rd.	In response to stakeholder requests for relicensing studies, the Licensee developed a Study Plan in 2020 for a Recreation Enhancement and Feasibility Assessment. The study report is currently being finalized and will be distributed for stakeholder review. The study assessed extending the trail.
FOC	3/24/21	3.1 miles south of the Cheat Lake Park access, the Trail dead-ends at a chain-link fence. Most of the peninsula is owned by Eagle Creek, with part of the north side being designated as the Cheat Haven Wildlife Viewing Area. There are also 3 parcels totaling 15.82 acres that are owned by Quadco Enterprises Inc. The tax maps indicate that the railroad right-of-way continues through this parcel and back into the Lake Lynn Generation property which encompasses most of the peninsula. Ideally, this end of the trail could be extended to a third public access point such as Cheat Lake Marina that would allow for through-traffic, but private homes and steep slopes past the terminus of the rail grade will stand as formidable obstacles.	In response to stakeholder requests for relicensing studies, the Licensee developed a Study Plan in 2020 for a Recreation Enhancement and Feasibility Assessment. The study report is currently being finalized and will be distributed for stakeholder review. The study assessed extending the trail to the south.
FOC	3/24/21	There exists an opportunity to create another access point for river egress in the lower Canyon at a spot called Buzzard Run. Here, an existing single lane gravel road extends from Snake Hill Rd 1.4 miles down to Cheat Lake. Improvements to this road as well as the development of a small parking lot and non-motorized boat ramp would allow paddlers to float to this point from Albright or Jenkinsburg. The WVDNR would also be a necessary partner in establishing this area as a public trail, as much of it lies within the Snake Hill Wildlife Management Area.	In response to stakeholder requests for relicensing studies, the Licensee developed a Study Plan in 2020 for a Recreation Enhancement and Feasibility Assessment. The study report is currently being finalized and will be distributed for stakeholder review. The study provided a preliminary assessment of this area.
CLEAR	3/25/21	Debris in Cheat Lake comes almost entirely from trees, limbs, branches, twigs, and leaf mass being washed from the headwater area. This debris creates safety issues for boaters and those on water skis. We seek to place floating safety buoys on the trees.	The Licensee will continue to work cooperatively with CLEAR regarding safety-related concerns at the Project.
CLEAR	3/25/21	CLEAR is dedicated to assist in the removal of plastic floating debris.	The Licensee will continue to work cooperatively with CLEAR regarding safety-related concerns at the Project.
CLEAR	3/25/21	Safety buoys to demark no-wake and danger zones need to be maintained during boating season at the various locations. There are also safety zones close to the Lake Lynn Dam and in other locations.	No-wake safety buoys on Cheat Lake are the responsibility of WVDNR. Safety buoys at the dam and beach are maintained by the Licensee.

CLEAR	3/25/21	The debris accumulation at the Sunset Beach has resulted in local residents building stack fires on the shoreline to burn off the debris materials. CLEAR recommends that this practice be examined so that alternatives can be established. The clearing of debris from some areas of the shoreline by manual labor may be appropriate on a once per year basis.	The Licensee will look into this issue to determine if this activity is within the Project boundary.
CLEAR	3/25/21	The Swimming Beach on the Cheat Lake Park & Trail was damaged during last winter. We are confident that plans are underway to restore this beach area and reapply sand that has been washed away.	The Licensee is working to prepare this site along with all recreation sites for the upcoming recreation season.
CLEAR	3/25/21	CLEAR promotes the extension of the beach to the day-use boat docks. This whole area should be marked with signage indicating "No Dogs in this Area." There is an appropriate area as a dog beach on the Trailhead side of the Morgan Run backwater entrance, which should be identified "Dog Swimming Only" or other similar wording.	In response to stakeholder requests for relicensing studies, the Licensee developed a Study Plan in 2020 for a Recreation Enhancement and Feasibility Assessment. The study report is currently being finalized and will be distributed for stakeholder review. The study assessed extending the beach area.
CLEAR	3/25/21	CLEAR requests that the four Wildlife Habitat and Nature Viewing Areas be made available as research areas for a five (5) year period. Research project proposals would be submitted in advance of any activity and would involve non-intrusive schemes.	Any non-Project use of Project lands must be consistent with the Standard Land Use Article in the FERC license. The Licensee has the authority to permit certain types of activities without prior FERC notice and approval and will consider any requested activities in accordance with the Standard Land Use Article and the FERC license.
CLEAR	3/25/21	The Recreation Plan in the past has identified five (5) "PUBLIC ACCESS DECK" locations along the South Trail, however, CLEAR has worked with previous owners to reduce this to two public observation decks - at the fence gate to the South Trail and the CLEAR Dock Deck near the south most Nature Viewing Area. These are important components of the overall Recreation Plan and should be maintained.	There are no plans to remove these Public Access Decks.
CLEAR	3/25/21	Shoreline erosion continues to be a problem around the lake. The lake level variations as well as the sustained presence of boat wakes continues to erode the shoreline. The steep nature of the shore contributes to this problem. Another factor is the on-going building of private homes around the lake where many new owners seek to down trees and bushes for their viewing pleasure. These activities result in land subsidence between the private homes and the Lake itself. More study and mitigation would be appropriate for these issues.	Comment noted. The Licensee only has authority over activities on its land and lands within the FERC-licensed Project boundary.

CLEAR	3/25/21	The installation and maintenance of signage in the region around the Lake is essential. Generally, the Cheat Lake Park & Trail is not easy to locate for the first time, and even then, the roads are not easy to navigate. Signs in the region and along the roads would be useful to the general public. The signage in recent past years has been quite good, but not optimal.	The Licensee maintains its Part 8 recreation site signage at the entrances to the Project recreation sites. A sign for Cheat Lake Park is located on Highway 43.
CLEAR	3/25/21	The Cheat Lake Park & Trail and the Lake Lynn lake itself serves primarily Monongalia County in West Virginia but is important to the adjoining counties and the region as a whole. The future of the lake and its usage are very important public service topics.	Comment noted.
CLEAR	3/25/21	CLEAR recommends that a study of the lake level in the Sunset Marina Cove be prepared and distributed for study. The dredge activity recently completed was helpful but may well need to be extended for the practical continued use of the public access of fishing and recreational boats.	The Licensee is required by the FERC license to maintain the public boat ramp at Sunset Beach Marina and recognizes that additional dredging at the Sunset Beach Marina in the future may be necessary to maintain accessibility of the public boat ramp.
CLEAR	3/25/21	The Winter Fishing Launch at the main Trailhead has been serving as intended, but consistent and complete maintenance is needed as the connections are frequently disengage and floating Lake debris often fouls its usage.	The Licensee is working to address this issue and to prepare this site along with all recreation sites for the upcoming recreation season.
CLEAR	3/25/21	At a future time, plans will be needed to interconnect the Cheat Lake Trail to the Sheepskin Trail. Safety and security considerations will apply and service to the public can result in the best interest of both States.	The Licensee will continue to work with interested stakeholders, outside of the Recreation Plan, to allow a connection of the Sheepskin Trail to the Cheat Lake Trail.
CLEAR	3/25/21	Adequate parking is needed at Sunset Marina so that fishing trucks and trailers can use the only public access ramp during the boating season	The Licensee is working to address parking issues with the operator of the Sunset Beach Marina.
CLEAR	3/25/21	A bicycle rental vendor would be useful at the Trailhead. A jitney vehicle to transport people from the parking lots to the swimming area would be useful.	The Licensee does not plan to provide these services at Cheat Lake Park but is willing to consider working with CLEAR to explore these further.

CLEAR	3/25/21	A brochure distribution box with information on the Lake and Trail system would be appropriate.	The Licensee provides public information on its website and is happy to provide information on Cheat Lake and the Trail to local organizations to promote within their membership. The Licensee does not believe that providing a paper brochure is worth the cost and anticipates that paper brochures would contribute to the litter in that Park and along the trail.
CLEAR	3/25/21	A safety officer/information staff person would be very helpful to the new people coming in to use these facilities	The Licensee's maintenance and security contractor is on-site during daylight hours on weekends and holidays from Memorial Day weekend through Labor Day in accordance with the 2018 Recreation Plan Update. The Licensee's contractor serves in this role.
CLEAR	3/25/21	Press releases every week during the swimming/boating season would be carried in the local newspapers.	The Licensee provides public information on its website and will provide necessary public notifications. The Licensee does not have plans to provide general press releases to promote recreation use to the local newspapers but is happy to provide information to local organizations to promote within their membership.
USFWS	3/29/21	As we discussed, there are some elements of the current draft Recreation Plan that are intended for enhancement in the new license application. Those items are not part of the current Recreation Plan draft but are being developed for any new license issuance. The Service has long promoted more accessible recreation for users with disabilities. We are glad you are considering these factors in your enhancements.	The Licensee is currently working on relicensing the Project. The Draft License Application is due in early 2022 and will include the Licensee's proposals for recreation and other resources.
USFWS	3/29/21	We appreciate the survey effort conducted to categorize the types of recreation conducted, rather than just generic recreation days cited. As I mentioned, if you can be more specific in section 5.0 Recreation Use Monitoring to detail the spot count methodology. The short duration spot count has some limitations in that it may not have been conducted at the time suitable for that activity (e.g., early morning birding during migratory periods of interest to users), so we interpret the exact percentage of the category with some sampling effect consideration.	Section 4.0 has been revised to include additional information on methodology and to clarify the results.
USFWS	3/29/21	Overall, it is important to note the 2020 sampling estimated 143,981 recreation days by users at the Project facilities.	Comment noted.

**From:** [Joyce Foster](#)  
**To:** [amanda@cheat.org](mailto:amanda@cheat.org); [duane330@aol.com](mailto:duane330@aol.com); [mstrager@gmail.com](mailto:mstrager@gmail.com); [Michael Strager](#); [Heather Smiles](#); [Jacob Harrell](#); [Danny.A.Bennett@wv.gov](mailto:Danny.A.Bennett@wv.gov); [Norman Janet](#); [rmcclure@moncommission.com](mailto:rmcclure@moncommission.com); [agastbray@moncommission.com](mailto:agastbray@moncommission.com); [ella@montrails.org](mailto:ella@montrails.org); [owen@cheat.org](mailto:owen@cheat.org); [betty.w304@gmail.com](mailto:betty.w304@gmail.com); [fjernejcic@comcast.net](mailto:fjernejcic@comcast.net); [info@monsheriff.com](mailto:info@monsheriff.com)  
**Cc:** [Joyce Foster](#)  
**Subject:** Lake Lynn Hydroelectric Project (FERC No. P-2459) - Draft 2021 Recreation Plan Update  
**Date:** Tuesday, February 23, 2021 8:43:00 AM  
**Attachments:** [image001.png](#)  
[Lake Lynn 2021 Recreation Plan Update Review Draft.docx](#)

---

The Federal Energy Regulatory Commission (FERC) license for the Lake Lynn Hydroelectric Project (FERC Project No. P-2459) requires that Lake Lynn Generation, LLC (Lake Lynn) conduct a triennial review and update of the Project Recreation Plan. As part of the review process, Lake Lynn is required to distribute a draft of the Recreation Plan to stakeholders in accordance with the License Article 418. Attached is the 2021 Lake Lynn Hydroelectric Project Draft Recreation Plan Update for your review. Please provide me with any comments or questions within 30 days (by March 25, 2021) so that we can finalize the draft and file the Final Plan with FERC by the end of March. Please let me know if I inadvertently left anyone off this email.

Thank you.

---

**Joyce A. Foster | Director, Licensing and Compliance**  
**Eagle Creek Renewable Energy**  
Mobile: 804 338 5110  
Email: [joyce.foster@eaglecreekre.com](mailto:joyce.foster@eaglecreekre.com)



*This message is intended only for the named recipient and may contain confidential, proprietary or legally privileged information. No confidentiality or privilege is waived or lost by any misdirected transmission. If you received this message in error, please notify sender immediately and delete this message from your system. If you are not the intended recipient, you must not use, disclose, distribute or copy any part of this message.*



From: [Duane Nichols](#)  
To: [mstrager@gmail.com](#); [chestermcgraw@gmail.com](#); [Duane Nichols](#); [Jody Smet](#); [Karen Baldwin](#); [Joyce Foster](#)  
Cc: [donnamweems@gmail.com](#); [Paula Hunt](#)  
Subject: MINUTES OF CLEAR MEETING ON MARCH 16, 2021  
Date: Saturday, March 27, 2021 2:52:17 PM

---

**[This email originated OUTSIDE of Eagle Creek. Exercise caution. DO NOT open attachments or click links from unknown senders or unexpected email.]**

CLEAR meeting March 16, 2021 6 PM via Zoom

Present: Duane Nichols, Donna Weems, Mike Strager, Karen Baldwin, Bucky Forbes, Jody Smelt, Joyce Foster.

Duane opened the meeting. He welcomed the participants and expressed appreciation for the good working relationship and partnership of the those involved with managing the outstanding resources at Cheat Lake. CLEAR will deliver our comments for the Triennial Review Recreation Plan Update by March 25<sup>th</sup>.

Joyce gave a summary of the Triennial Plan and Relicensing (A copy of the summary of the Triennial Plan and Relicensing was promised [but never delivered] would be made available electronically). Currently the 2018 Plan is in place and the update would be consistent with that plan. A study plan and update will be tweaked with TRC's recreational study.

The 2 year review leading to the Relicensing of the Lake Lynn Dam will end in early 2022 and the final decision in November 2022 by the Federal Energy Regulatory Commission (FERC).

CLEAR mentioned the importance of the Sheepskin Rail Trail, the extension of the Cheat Lake Park and Trail beach towards the dock area, and that CLEAR would be partnering with researchers to do a study of the efficacy of the Wildlife Viewing Area and trails.

Jodie Smelt said that the reports of the exploration of feasibility and need are to be completed. These will be summarized and the draft application and proposal for the Recreation Plan will be filed by the end of March.

It was mentioned that the draft update is being circulated for 30 days. It is important to acknowledge that a recreational plan is being conducted and other areas are being explored.

Duane mentioned that shoreline erosion and subsidence into the lake were issues to be addressed. A task force and special meeting are recommended to focus on addressing those issues. He also impressed that the park will be used more extensively with good communication; that CLEAR can play a greater role interfacing with the public. Currently Eagle Creek does not interface with the public at large but a monthly radio and newspaper report would be very helpful.

Duane suggested an on-site person was needed to meet the public and possibly help develop a

bicycle concession. Possible ways this could be accomplished is by developing a better website, social media, radio presence, recreational official at the park, better signage etc.

Bucky Forbes does park maintenance and is a frequent presence at the park, helping with security. He reported that high water/flood events are occurring more frequently. In 2019 the park spent over \$20,000 cleaning up a slip off the trail and lately \$10,000 on a new slide.

Duane mentioned that the county planning commission headed by Andrew, the county planner, had developed protocols that advises new developers and landowners to institute best practices to control run-off. This should help alleviate future problems, however the rules are not retroactive to past developments. Regulations that curb erosion and stormwater runoff are in the works in the next few years.

Mike Strager commented that vandals knocked over the lights along the park rail-trail. Bucky believes the culprits are dirt bikers who were caught on camera. What can we do to help disseminate current information?

There has been no formal property management plan. Eagle Creek is attempting to develop a shoreline stabilization process. Eagle Creek has plans to require written permission for property owners who wish to disturb the shoreline.

Karen plans to transplant a successful water safety program to Cheat Lake. This will include boat ramp safety and protocols and a summer water safety program with in-person activities. Karen invited the members of CLEAR to participate.

Phase II and Phase III — restore the beauty of Cheat Lake by cleaning up the beat-up dock debris. Eagle Creek will partner with CLEAR in our efforts to keep the lake clean up activities going by supplying dumpsters, labor and supplies.

Duane spoke of Frank Jernasic's ability to be a consultant for the winter boat ramp. Duane, Frank, Mike and members of Eagle Creek will meet Tuesday afternoon at the park winter boat ramp to discuss.

Duane pointed out that it is important to continue the process of improving the accessibility of Cheat Lake Park and Trail. People in wheelchairs, mothers with tiny children and others may find getting their gear down the hill and/or to the swimming area. Eagle Creek said they would provide assistance upon request. Duane raised the example of how Blennerhassett Island provides electric cart service to those in need of transportation.

New signs are needed to communicate clearly what is happening with the trail maintenance.

The meeting ended at 7 PM.

Minutes respectfully submitted by Donna Weems

**From:** [Joyce Foster](#)  
**To:** [Jacob Harrell](#); [Norman, Janet](#); [Danny.A.Bennett@wv.gov](mailto:Danny.A.Bennett@wv.gov); [Heather Smiles](#)  
**Cc:** [Jody Smet](#)  
**Subject:** Lake Lynn Hydroelectric Project (FERC No. P-2459) - Draft 2021 Recreation Plan Update  
**Date:** Monday, March 22, 2021 11:32:00 AM  
**Attachments:** [image002.png](#)  
[20180402\\_Lake\\_Lynn\\_Rec\\_Plan\\_Update\\_2018\\_FILED.pdf](#)  
[Lake\\_Lynn\\_Study\\_Plan\\_May\\_2020\\_Revised\\_clean.pdf](#)

---

All,

As follow-up to our discussion, attached is the 2018 Lake Lynn Project Recreation Plan Update and the Revised Study Plan that discussed recreation relicensing study and additions for the 2021 Recreation Plan Update.

Thank you,

---

**Joyce A. Foster | Director, Licensing and Compliance**  
**Eagle Creek Renewable Energy**

Mobile: 804 338 5110

Email: [joyce.foster@eaglecreekre.com](mailto:joyce.foster@eaglecreekre.com)



*This message is intended only for the named recipient and may contain confidential, proprietary or legally privileged information. No confidentiality or privilege is waived or lost by any misdirected transmission. If you received this message in error, please notify sender immediately and delete this message from your system. If you are not the intended recipient, you must not use, disclose, distribute or copy any part of this message.*

From: [Ella Belling](#)  
To: [Joyce Foster](#); [Jody Smet](#)  
Subject: Lake Lynn Hydroelectric Project (FERC No. P-2459) - Draft 2021 Recreation Plan Update  
Date: Wednesday, March 24, 2021 12:57:09 PM  
Attachments: [LakeLynnRecreationComments2021.pdf](#)

---

**[This email originated OUTSIDE of Eagle Creek. Exercise caution. DO NOT open attachments or click links from unknown senders or unexpected email.]**

Hi Ms. Foster

Thank you for this opportunity to provide comment on the draft 2021 Recreation Plan for Lake Lynn. Take care, Ella

Ella Belling  
Executive Director  
Mon River Trails Conservancy  
P.O. Box 282  
Morgantown, WV 26507  
<http://montrails.org>  
304-692-6782



P.O. Box 282  
Morgantown  
West Virginia  
26507-0282

March 23, 2021

Joyce A. Foster  
Director, Licensing and Compliance  
Lake Lynn Generation /Eagle Creek Renewable Energy  
2 Bethesda Metro Center, Suite 1330  
Bethesda, Maryland 20814

Re: *Information Request for the Recreation Plan for Lake Lynn Hydroelectric Project (FERC No. P-2459)*

Dear Ms. Foster,

On behalf of the Monongahela River Trails Conservancy Ltd. (MRTC), I am submitting comments concerning the Draft Recreation Plan of the Lake Lynn Hydroelectric Project (FERC No. P-2459). MRTC is a non-profit 501c3 organization managing the Mon River Rail-Trail system, a 48-mile, tri-county rail-trail network in North Central West Virginia. MRTC shares with other regional stakeholders the vision of having the Cheat Lake Trail connect with the Sheepskin Trail in Pennsylvania and the Mon River Trail network in West Virginia and ultimately be part of a long-distance trail network that extends from Ohio through West Virginia and Pennsylvania to Washington D.C.

Lake Lynn Generation, in now owning and managing the Cheat Lake Dam aka Lake Lynn Facilities, has continued to provide a wide mix of public recreational options to enjoy the area including hiking, biking, birding, paddling, fishing, swimming, and boating. MRTC supports these recreational activities and would like to see improvements to these recreational opportunities be included in this recreation plan as part of the re-licensing process:

1. To have the entire 4.5-mile Cheat Lake Trail open and accessible to the public all year long. The gate on the south end should be removed or simply remain open and unlocked at night. This would lessen the work of your maintenance crew and provide access to trail users. Please make this recommendation to FERC in this recreation plan.
2. To plan and build a connection of the Cheat Lake Trail to the Sheepskin Trail at the north end of the 4.5 mile Cheat Lake Trail. This would connect the Cheat Lake Trail into a nearly 60 mile rail-trail network and connect many communities including Point Marion, PA, Morgantown, WV, and Fairmont, WV. This involves opening the gate at the north end of trail and working with other stakeholders to build new trail on Lake Lynn Generation property to link into the Sheepskin Trail corridor. The Sheepskin Trail Corridor is owned by Fayette County, PA and is currently being engineered and built. The Sheepskin Trail is not yet built to the Cheat Lake Trail but we anticipate it will be in the next 5-8 years.
3. To extend the Cheat Lake Trail south on Lake Lynn Generation property and in doing so, open up more area to hiking, biking, birding and fishing.

4. To improve fish, bird, and pollinator habitat along the Cheat Lake Trail.
5. To improve recreational promotion of the Cheat Lake recreation area by hiring on-site recreation staff, by improving public communication (website, social media, phone), taking down old signs that were a part of the trail repair, putting up a directional sign at the path that leads to the housing development, and by creating a process for holding events on the Cheat Lake Trail such as walks and runs.

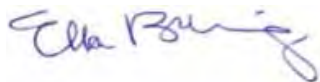
During the time of COVID-19 pandemic, we are seeing an increase in recreational use as people seek ways to safely exercise and find respite in the outdoors. We expect this need to continue and see these recommendations as improving the health of those living in our region.

Recreation on the river and neighboring rail-trails ties our communities in West Virginia and Pennsylvania together economically and socially. Bass tournament participants cross city, county and state lines. Both the Monongahela River and Cheat Rivers are regionally promoted water trails, and both paddlers and boaters move up and down the rivers to access different communities. Our rail-trails are used for commuting to work and school, trail tourism, and recreation. Our communities are dependent on each other to provide access, amenities, and tourism services in order to recruit new businesses and people to live in the region and entice visitors into extended stays and return visits.

The Cheat Lake Trail is one of a cluster of rail-trails in the region that provides recreation, a social gathering space, and a chance to connect with nature. It is widely used by local groups such as Hike it Baby, an outdoor meet-up group for families with young children, the Mountaineer Chapter of the National Audubon Society for public birding outings and the Christmas Bird Count, and cycling and running groups for exercise and outdoor recreation. Additionally, the Cheat Lake Trail is a part of a growing 1,500+ mile trail network connecting 50+ counties in four states (WV, OH, PA and NY). The Industrial Heartland Trails Coalition is a group comprised of more than 100 organizations, whose vision and mission it is to advance the trail network by closing gaps and connecting communities to bring health and wealth to communities through trail tourism and safe, equitable trail access by local residents.

Thank you for considering these recommendations from community stakeholders as part of the re-licensing process. Please feel free to contact me at 304-692-6782 or [ella@montrails.org](mailto:ella@montrails.org) with any questions or if you need additional information.

Sincerely,  
Monongahela River Trails Conservancy, Ltd.



Ella Belling, Executive Director

From: [Hannah Clipp](#)  
To: [Joyce Foster](#)  
Cc: [Ella Belling](#)  
Subject: Mountaineer Audubon Comment on the 2021 Lake Lynn Hydroelectric Project Draft Recreation Plan Update  
Date: Wednesday, March 24, 2021 11:34:04 PM

---

**[This email originated OUTSIDE of Eagle Creek. Exercise caution. DO NOT open attachments or click links from unknown senders or unexpected email.]**

Dear Joyce Foster,

I am submitting this public comment on behalf of the Mountaineer chapter of the National Audubon Society.

We believe that plans need to include a commitment to facilitate an at-grade connection to the Sheepskin Trail.

We also believe that the entire Cheat Lake Trail should be open at all times. There should be no closed, locked gate for the Cheat Lake Trail south. Any gates should be left open and the trail should always be accessible to bicycles and foot traffic all year long and all day long.

Thank you for your consideration of our comments!

Best regards,  
Hannah Clipp  
Mountaineer Audubon President

**/ Hannah L. Clipp**

PhD Candidate | NSF Graduate Research Fellow | Associate Wildlife Biologist®  
West Virginia Cooperative Fish and Wildlife Research Unit  
Division of Forestry and Natural Resources  
West Virginia University

**From:** [Harrell, Jacob D](#)  
**To:** [Jody Smet](#); [Joyce Foster](#)  
**Subject:** Lake Lynn Recreation Plan Update  
**Date:** Wednesday, March 24, 2021 12:30:00 PM  
**Attachments:** [Lake Lynn 2021 Recreation Plan Update.pdf](#)

---

**[This email originated OUTSIDE of Eagle Creek. Exercise caution. DO NOT open attachments or click links from unknown senders or unexpected email.]**

Jody,

Please see the attached comments of WVDNR regarding the 2021 Recreation Plan Update for the Lake Lynn Hydroelectric Project. These comments will be filed later today with FERC. If you have any questions or comments regarding this letter, please feel free to contact me.

Thank you,

Jacob Harrell

Coordination Unit  
WVDNR – Wildlife Resources Section  
1110 Railroad Street  
Farmington, WV 26571  
(304)704-9328  
[Jacob.D.Harrell@wv.gov](mailto:Jacob.D.Harrell@wv.gov)





**DIVISION OF NATURAL RESOURCES**  
**Wildlife Resources Section**  
**District I**  
**PO Box 99, 1110 Railroad Street**  
**Farmington, West Virginia 26571-0099**  
**Telephone 304 825-6787**  
**Fax 304 825-6270**  
**TDD 800-354-6087**

**Stephen S. McDaniel**  
**Director**

March 24, 2021

Jody Smet, AICP  
Vice President Regulatory Affairs  
Eagle Creek Renewable Energy  
2 Bethesda Metro Center, Suite 1330  
Bethesda, MD 20814

**RE: Lake Lynn Hydroelectric Project, FERC no. 2459; Comments on the Draft 2021  
Recreation Plan Update**

Dear Ms. Smet:

Thank you for allowing the West Virginia Division of Natural Resources, Wildlife Resources Section (WRS) the opportunity to review the draft 2021 Recreation Plan Update for the Lake Lynn Hydroelectric Project, FERC no. 2459 (Lake Lynn). Article 417 of the Lake Lynn license requires the licensee to file a recreation plan update every three years in consultation with the Department of the Interior, the WRS, and the Pennsylvania Fish and Boat Commission (PFBC). The WRS has reviewed the revised draft update and offers the following comments for your consideration:

**2.3 Cheat Lake Park**

The courtesy dock located on the main body of Cheat Lake near the Morgan Run embayment is in a dilapidated state and has been for the past several years. The dock has become increasingly unsafe and is in need of significant repairs. As it is now, the dock presents a safety

hazard for boaters. The WRS, out of concern for the safety of boaters to Cheat Lake, requests that the dock be repaired as soon as possible.

#### **4.0 Recreation Use Monitoring**

A recreation study was conducted in 2020. By all metrics, 2020 was an atypical year due, in large part, to the ongoing Covid-19 pandemic. As a result, the WRS would not support basing any management decisions on data collected during conditions that would not be representative of expected conditions. The WRS further questions some of the results of the study conducted as not being generally what would have been expected or likely. As an example, Table 4-3 notes that 0% of the recreation users to Cheat Lake engage in boat fishing. This is not reflective of the actual recreational activity experienced at Cheat Lake. The number of fishing tournaments held at Cheat Lake each year would directly refute the assessment of 0% boat anglers, as well as the frequent correspondences the WRS has with boat fishermen at Cheat Lake on an annual basis. Our records indicate a total of 15 out of 26 scheduled and registered fishing tournaments were conducted on Cheat Lake in 2020. Cheat Lake also ranks third in the state for 10-year catch rate and in waterbodies where over 1,000 tournament hours were logged. Considering the popularity for tournament fishing, it can be assumed that non-tournament angling hours would be high, as well.

The findings of the 2020 recreation study do not align with what the WRS has noted and observed and these findings may ultimately be a result of how the study was conducted, how the questionnaire was presented, how pandemic conditions affected recreation, or a combination of all three. Regardless, the WRS does not have confidence in the accuracy of the recreation study and urges caution in using the study in formulating management decisions regarding the recreation within the lake. Additionally, it may be advantageous to conduct another recreation study, particularly if the results of this previous one are intended to inform the relicensing process for Lake Lynn Hydro. The WRS would recommend coordinating with the WRS in developing and implementing another recreation study. Such analysis could be conducted in concert with the upcoming angler creel survey.

#### **6.0 Proposed Recreation Plan Amendments**


The WRS concurs with Lake Lynn in affirming that this would be the final recreation plan update under the current license. Additionally, the WRS would support the removal of the fish cleaning station at Cheat Lake Park due to its underutilization from year to year.

The WRS would propose one additional amendment to the recreation plan. With regards to the courtesy dock located at the winter boat launch at Cheat Lake Park, the WRS would recommend that this courtesy dock be repaired in as timely a manner as possible. The dock has become increasingly unsafe through years of water fluctuations, flow and neglect. Ignoring the dock any further may result in significant harm to public recreation users.

Thank you again for the opportunity to provide comments regarding the draft 2021 Recreation Plan Update. If you have any questions or comments concerning the WRS' positions with

regards to the recreation plan please contact me at (304)989-0208 or by email at [jacob.d.harrell@wv.gov](mailto:jacob.d.harrell@wv.gov)

Sincerely Yours,



Jacob Harrell  
Hydropower Coordination Biologist

**From:** [Harrell, Jacob D](#)  
**To:** [Joyce Foster](#)  
**Subject:** RE: [External] RE: Lake Lynn Recreation Plan Update  
**Date:** Wednesday, March 24, 2021 2:16:13 PM  
**Attachments:** [image001.png](#)

---

**[This email originated OUTSIDE of Eagle Creek. Exercise caution. DO NOT open attachments or click links from unknown senders or unexpected email.]**

Joyce,

Thank you for the clarification. We can certainly provide our tournament data for you guys. Even if the spot counts did not target the tournament dates, it still doesn't explain how boat fishing was concluded to be 0% at Cheat Lake, according to the recreation plan. It sounds like the issue here is the methodology. If I read your statement correctly, people weren't specifically interviewed but rather your surveyor simply recorded what they thought people were doing at the lake, which may have contributed to an underrepresentation of certain activities. If you are free today for a quick chat, I am available at the office at (304) 825-6787. I apologize for not being on the call earlier this week. That may have helped to clear up some matters on this end.

Thanks,

Jacob Harrell

---

**From:** Joyce Foster <[joyce.foster@eaglecreekre.com](mailto:joyce.foster@eaglecreekre.com)>  
**Sent:** Wednesday, March 24, 2021 1:13 PM  
**To:** Harrell, Jacob D <[Jacob.D.Harrell@wv.gov](mailto:Jacob.D.Harrell@wv.gov)>; Jody Smet <[Jody.Smet@eaglecreekre.com](mailto:Jody.Smet@eaglecreekre.com)>  
**Subject:** [External] RE: Lake Lynn Recreation Plan Update

**CAUTION: External email. Do not click links or open attachments unless you verify sender.**

Jacob,

Thank you for providing written comments. I would be happy to chat with you but I thought it would be helpful for me to clarify some of your questions/concerns you had that we discussed on the call earlier this week. The recreation use data was collected for the recreation plan update to provide additional information than in previous years where no recreation activity information was collected. Recreationists were not interviewed for this plan in 2020, but recreation spot counts were conducted. During a spot count, each recreation site is visited and the number of people and activities they are participating in at a project recreation site are recorded to give a "snapshot" of use. The recreation spot counts were performed on randomly selected dates and times with a distribution across a wide range of conditions. The surveyor was recording use occurring at each recreation site via land but was not going out on Cheat Lake to conduct any counts. We will be working to clarify this in the Plan. Dates of fishing tournaments were not targeted but if you have information on numbers/dates related to those, we can include that information in the Plan as well.

Thank you!

---

**Joyce A. Foster | Director, Licensing and Compliance**  
**Eagle Creek Renewable Energy**

Mobile: 804 338 5110

Email: [joyce.foster@eaglecreekre.com](mailto:joyce.foster@eaglecreekre.com)



*This message is intended only for the named recipient and may contain confidential, proprietary or legally privileged information. No confidentiality or privilege is waived or lost by any misdirected transmission. If you received this message in error, please notify sender immediately and delete this message from your system. If you are not the intended recipient, you must not use, disclose, distribute or copy any part of this message.*

---

**From:** Harrell, Jacob D <[Jacob.D.Harrell@wv.gov](mailto:Jacob.D.Harrell@wv.gov)>

**Sent:** Wednesday, March 24, 2021 12:30 PM

**To:** Jody Smet <[Jody.Smet@eaglecreekre.com](mailto:Jody.Smet@eaglecreekre.com)>; Joyce Foster <[joyce.foster@eaglecreekre.com](mailto:joyce.foster@eaglecreekre.com)>

**Subject:** Lake Lynn Recreation Plan Update

**[This email originated OUTSIDE of Eagle Creek. Exercise caution. DO NOT open attachments or click links from unknown senders or unexpected email.]**

Jody,

Please see the attached comments of WVDNR regarding the 2021 Recreation Plan Update for the Lake Lynn Hydroelectric Project. These comments will be filed later today with FERC. If you have any questions or comments regarding this letter, please feel free to contact me.

Thank you,

Jacob Harrell

Coordination Unit  
WVDNR – Wildlife Resources Section  
1110 Railroad Street  
Farmington, WV 26571  
(304)704-9328  
[Jacob.D.Harrell@wv.gov](mailto:Jacob.D.Harrell@wv.gov)

Joyce Foster

---

From: Owen Mulkeen <owen@cheat.org>  
Sent: Wednesday, March 24, 2021 12:49 PM  
To: Joyce Foster  
Cc: Amanda Pitzer  
Subject: Re: Lake Lynn Hydroelectric Project (FERC No. P-2459) - Draft 2021 Recreation Plan Update  
Attachments: Lake Lynn Recreation Plan\_ FOC Comments\_3.24.21.pdf

**[This email originated OUTSIDE of Eagle Creek. Exercise caution. DO NOT open attachments or click links from unknown senders or unexpected email.]**

Greetings Joyce,

Thanks for giving us the opportunity to comment on the draft plan. Please find my comments attached. Please let me know if there is anything else FOC can help with in the future.

Regards,  
Owen

On Tue, Feb 23, 2021 at 8:44 AM Joyce Foster <[joyce.foster@eaglecreekre.com](mailto:joyce.foster@eaglecreekre.com)> wrote:

The Federal Energy Regulatory Commission (FERC) license for the Lake Lynn Hydroelectric Project (FERC Project No. P-2459) requires that Lake Lynn Generation, LLC (Lake Lynn) conduct a triennial review and update of the Project Recreation Plan. As part of the review process, Lake Lynn is required to distribute a draft of the Recreation Plan to stakeholders in accordance with the License Article 418. Attached is the 2021 Lake Lynn Hydroelectric Project Draft Recreation Plan Update for your review. Please provide me with any comments or questions within 30 days (by March 25, 2021) so that we can finalize the draft and file the Final Plan with FERC by the end of March. Please let me know if I inadvertently left anyone off this email.

Thank you.

---

**Joyce A. Foster | Director, Licensing and Compliance**

**Eagle Creek Renewable Energy**

Mobile: 804 338 5110

Email: [joyce.foster@eaglecreekre.com](mailto:joyce.foster@eaglecreekre.com)



*This message is intended only for the named recipient and may contain confidential, proprietary or legally privileged information. No confidentiality or privilege is waived or lost by any misdirected transmission. If you received this message in error, please notify sender immediately and delete this message from your system. If you are not the intended recipient, you must not use, disclose, distribute or copy any part of this message.*

--

**Owen Mulkeen**

Friends of the Cheat

Associate Director

1343 North Preston Highway  
Kingwood, West Virginia 26537

Office [\(304\) 329-3621](tel:3043293621)

Cell [\(304\) 290-1893](tel:3042901893)

[www.cheat.org](http://www.cheat.org)

*Restore | Preserve | Promote*



Working to Restore, Preserve, & Promote the Outstanding Natural Qualities of the Cheat River Watershed since 1994

Joyce A. Foster  
Director, Licensing and Compliance  
Lake Lynn Generation /Eagle Creek Renewable Energy  
2 Bethesda Metro Center, Suite 1330  
Bethesda, Maryland 20814

March 24, 2021

Re: *Information Request for the Recreation Plan for Lake Lynn Hydroelectric Project*  
(FERC No. P-2459)

Greetings Ms. Foster,

Friends of The Cheat appreciates the opportunity to submit comments on the Draft Recreation Plan of the Lake Lynn Hydroelectric Project. FOC is a 501c3 non-profit based in Kingwood, WV. FOC has a long history with the Cheat River, with specific projects tied to acid mine drainage reclamation that the Cheat Lake community enjoys the benefits of with safe, clean water that supports water based activities and a vibrant fishery. Additionally, we have been involved with multiple recreation initiatives in the region, such as rail trails and river put-ins/take-outs, that are utilized by many citizens in and around the watershed.

FOC politely requests the following improvements and considerations for the recreation plan:

**1. Cheat Lake Trail Northern Terminus Extension / Sheepskin Trail Connector**

It would be ideal for the northern end of the Cheat Lake Trail be extended along the original rail grade to meet up with Lake Lynn Rd / Bunker Hill Rd. This would establish better connectivity with the proposed route of the Sheepskin Trail, a 34 mile long rail trail project that will eventually bridge the gap between the Great Allegheny Passage Trail and the Mon River Trail. Lake Lynn Generation (LLG), indicated in their 2015 Recreation Plan Update that "if and when, the Sheepskin Trail is constructed to the Project, LLG will request approval from FERC to provide access from the Lake Lynn/Bunker Hill Road to the Cheat Lake Trail." This report went on to say that in the Order Approving the 2012 Recreation Plan Update, FERC stated that this proposal was in the public interest.

**2. Cheat Lake Trail Southern Terminus Extension**

3.1 miles south of the Cheat Lake Park access, the CLT dead-ends at a chain-link fence. This area is on a peninsula formed by a ridge that extends out into the lake. Most of the peninsula is owned by Eagle Creek, with part of the north side being designated as the Cheat Haven Wildlife Viewing Area which includes a single-track hiking trail that loops up onto the ridge and back. There are also 3 parcels totaling 15.82 acres that are owned by Quadco Enterprises Inc. Despite the CLT ending abruptly at this parcel, the tax maps indicate that the railroad right-of-way continues through this parcel and back into the Cube Hydro property which encompasses most of the peninsula. On the ground reconnaissance confirmed that the rail grade did indeed continue around





Working to Restore, Preserve, & Promote the Outstanding Natural Qualities of the Cheat River Watershed since 1994

the peninsula. Ideally, this end of the trail could be extended to a third public access point such as Cheat Lake Marina that would allow for through-traffic, but private homes and steep slopes past the terminus of the rail grade will stand as formidable obstacles. In any case, extending the trail along the rail-grade could prove to be worthwhile, and would provide some of the best scenery along the trail. This would also provide an opportunity to build additional single-track trails over the ridge and back down to this side of the Peninsula.



### 3. Buzzard Run Public Fishing / Paddling / Hiking Access

There exists an opportunity to create another access point for river egress in the lower Canyon at a spot called Buzzard Run. Here, an existing single lane gravel road extends from Snake Hill Rd 1.4 miles down to Cheat Lake. Improvements to this road as well as the development of a small parking lot and non-motorized boat ramp would allow paddlers to float to this point from Albright or Jenkinsburg. This would help to circumvent the negative impact that the Lake Lynn Hydroelectric Project has had on river running in this area by reducing the flatwater paddle from 4.5 miles to 1.9 miles and greatly increasing the practicality and appeal of this river section. Additionally, this section of the Lake, often referred to as the backwaters, where the lake pool inundates the canyon, is perhaps the most tranquil and scenic of the entire Cheat Lake. For this reason, this proposed access point would also serve as a desirable access for flatwater kayaking and canoeing, as well as fishing. It would also minimize user conflict and increase safety for flatwater paddlers by allowing them to more easily access this section of the Lake that sees less powerboat traffic.



## Friends of the Cheat

Working to Restore, Preserve, & Promote the Outstanding Natural Qualities of the Cheat River Watershed since 1994



Development of public trails as suggested will require significant funding and collaboration between multiple entities. One of the most exciting opportunities that lies on the horizon is that of the passing of WV Senate Bill 317, which authorizes three adjacent counties to form a multi-county trail network authority, known as the Mountaineer Trail Network. Friends of the Cheat, have a pending ARC POWER grant application, which, if approved, would provide funding to do regional non-motorized trail planning and lay the groundwork for trail development by such an authority. This legislation would provide tools to negotiate the easements through private lands, such as would be necessary in order to open the proposed Lower Canyon Trail to the public. The WVDNR would also be a necessary partner in establishing the LCT as a public trail, as much of it lies within the Snake Hill Wildlife Management Area.

Regards,

Owen Mulkeen  
Associate Director

From: [Duane Nichols](#)  
To: [Jody Smet](#); [Joyce Foster](#)  
Cc: [mstrager@gmail.com](#); [nichols330@gmail.com](#); [donnamweems@gmail.com](#); [chestermcgraw@gmail.com](#); [fjernejcic@comcast.net](#); [agastbray@moncommission.com](#)  
Subject: CLEAR Comments on 2021 Recreation Plan Update  
Date: Thursday, March 25, 2021 3:54:54 PM  
Attachments: [CLEAR-Comments-March25-2021.docx](#)

---

**[This email originated OUTSIDE of Eagle Creek. Exercise caution. DO NOT open attachments or click links from unknown senders or unexpected email.]**

**CHEAT LAKE ENVIRONMENT & RECREATION ASSOCIATION**

**Lake Lynn Hydroelectric Project (FERC No. P-2459)**

**Comments on the “Draft Recreation Plan Update” submitted on March 25, 2021**

1. CLEAR wishes to acknowledge the good working relationship that has been present with the Eagle Creek personnel and believe that continued cooperation is in the best interest of the public usage of the Lake Lynn and the Cheat Lake Park & Trail.

2. Debris in Cheat Lake comes almost entirely from trees, limbs, branches, twigs and leaf mass being washed from the headwater areas in Preston and Tucker Counties of West Virginia. This debris creates substantial inconvenience for all Lake users and there are safety issues for boaters and those on water skis. We seek to place floating safety buoys on the trees.

3. CLEAR is dedicated to assist in the removal of plastic floating debris including plastic drums that have been used upstream to build floating platforms or docks. The CLEAR “work boat” has been docked in the Morgan Run backwater at a private dock, but we will seek to identify a new location consistent with the overall recreation plan.

4. Safety buoys to demark no-wake and danger zones need to be maintained during boating season at the various locations including the entries to the backwater areas, as all backwaters are no-wake zones, as well as the frontage of the Trailhead area that includes the swimming beach. There are also safety zones on the approach area of the Lake Lynn Dam, around the entrance to the lake cove at the Emma Kaufmann Camp, at the entrance to the Sunset Beach boat launch cove, and other possible locations.

5. The debris accumulation at the Sunset Beach has resulted in local residents actually building stack fires on the shoreline to burn off the unsightly and clogging debris materials. CLEAR recommends that this practice be examined so that alternatives can be established, given that the fires are a source of air pollution and other possible undesirable conditions. The clearing of debris from some areas of the shoreline by manual labor may well be appropriate on a once per year basis. Seasonal weather variations are a factor in this matter; for example, a major storm was experienced earlier this calendar year that brought in substantial amounts of woody debris.

6. The Swimming Beach on the Cheat Lake Park & Trail is quite popular and has been serving a very important function here in northern West Virginia and southwest Pennsylvania. During this past winter, the weather conditions and water level variations have done significant damage; but, we are confident that plans are underway to restore this beach area and reapply sand that has been washed into the Lake. CLEAR promotes the extension of the functional area of this beach from the Millstone Point over to the day-use boat docks. Further, as we have discussed, this whole area should be marked with signage indicating “No Dogs in this Area.” There is an appropriate area as a dog beach on the Trailhead side of the Morgan Run backwater entrance, a location that is actually in the Morgan Run backwater. This latter area is not safe for small children to swim and should be identified “Dog Swimming Only” or other similar wording.

7. CLEAR requests that the four Wildlife Habitat and Nature Viewing Areas be made available as research areas for a five (5) year period. Research project proposals would be submitted in advance of any activity and would involve non-intrusive schemes. For example, one area could be cleared of invasive plant species and then monitored year by year. Another example, wild flowers and other natural understory plantings could be made and monitored year by year. (Deer browsing is a known challenge for understory growth in these area.)

8. The Recreation Plan in the past has identified five (5) "PUBLIC ACCESS DECK" locations along the South Trail, the last being at the end of this trail segment. However, CLEAR has worked with previous owners to reduce this to two public observation decks. One is at the fence gate to the South Trail and the other is the CLEAR Dock Deck near the south most Nature Viewing Area. These are important components of the overall Recreation Plan and should be maintained, the importance of which will be increasing over time.

9. Shoreline erosion continues to be a serious problem around the lake. The lake level variations as well as the sustained presence of boat wake continues to erode the shoreline. The steep nature of the shore contributes to this problem. Another factor is the on-going building of private homes around the lake where many new owners seek to down trees and bushes for their viewing pleasure. These activities in a number of cases results in land subsidence between the private homes and the Lake itself. More study and mitigation would be appropriate for these issues.

10. The installation and maintenance of signage in the region around the Lake is essential. Generally, the Cheat Lake Park & Trail is not easy to local for the first time, and even then, the roads are not easy to navigate. Signs in the region and along the roads would be useful to the general public and would result in a much greater utilization of the recreation areas. The signage displayed in recent past years has been quite good, but not optimal.

11. The Cheat Lake Park & Trail and the Lake Lynn lake itself serves primarily Monongalia County in West Virginia, but is important as well to the adjoining counties and the region as a whole. For example, regional fishing tournaments are common on this Lake. This region has a growing population, and further, public recreational activities are becoming a more important component of the quality of life in this region. So, the future of the lake and its usage are very important public service topics.

12. CLEAR recommends that a study of the lake level in the Sunset Marina Cove be prepared and distributed for study. The dredge activity recently completed was helpful, but may well need to be extended for the practical continued use of the public access of fishing and recreational boats.

13. The Winter Fishing Launch at the main Trailhead has been serving as intended we believe, but consistent and complete maintenance is needed as the connections are frequently disengage and floating Lake debris often fouls its usage. Further, a plan will be submitted in the near future to upgrade this access for next winter involving a stepwise entry into the Lake, an approach being use at the Lake in Preston County, WV.

14. At a future time, plans will be needed to interconnect the Cheat Lake Trail to the Sheepskin Trail, the latter trail running southwest to Pt. Marion and on into West Virginia as well as running northeast into Pennsylvania. Safety and security considerations will apply and service to the public can result in the best interest of the both States.

15. There are numerous possible activities that can benefit the public usage of the Lake and Trail system. Adequate parking is needed at Sunset Marina so that fishing trucks and trailers are use the only public access ramp in the boating season. A bicycle rental vendor would be useful at the Trailhead. A jitney vehicle to transport people from the parking lots to the swimming area would be useful. A brochure distribution box with information on the Lake and Trail system would be appropriate. A safety officer/information staff person would be very helpful to the new people coming in to use these facilities. Press releases every week during the swimming/boating season

would be carried in the local newspapers.

**Duane Nichols, President of CLEAR  
Cheat Lake Environment & Recreation Association  
330 Dream Catcher Circle  
Morgantown, WV 26508**

[Duane330@aol.com](mailto:Duane330@aol.com)

**Cell: 304-216-5535**

**From:** [Norman, Janet](#)  
**To:** [Jody Smet](#); [Joyce Foster](#)  
**Cc:** [Thompson, Julie](#); [Harrell, Jacob D](#); [Smiles, Heather A](#)  
**Subject:** Comments on Lake Lynn Project, 2021 Recreation Plan Update draft  
**Date:** Monday, March 29, 2021 10:41:00 AM

---

**[This email originated OUTSIDE of Eagle Creek. Exercise caution. DO NOT open attachments or click links from unknown senders or unexpected email.]**

Jody and Joyce,

I have reviewed the 2021 Recreation Plan Update - Draft for the Lake Lynn Hydropower Project (FERC #2459) that I received on March 3, 2021. I participated with you and WV Dept. of Natural Resources and Pennsylvania Fish and Boat Commission staff on the conference call to discuss the draft plan on 3/22/21. I appreciate you sending the 2018 Recreation Plan for review purposes after that meeting.

As we discussed, there are some elements of the current draft Recreation Plan that are intended for enhancement in the new license application. Those items are not part of the current Recreation Plan draft, but are being developed for any new license issuance. The Service has long promoted more accessible recreation for users with disabilities. We are glad you are considering these factors in your enhancements.

I think the draft Recreation Plan reads very well and we appreciate the survey effort conducted to categorize the types of recreation conducted, rather than just generic recreation days cited. As I mentioned, if you can be more specific in section 5.0 Recreation Use Monitoring to detail that spot counts were done two weekdays and two weekends per month at randomized times. The short duration (30-45 minute) spot count has some limitations in that it may not have been conducted at the time suitable for that activity (e.g. early morning birding during migratory periods of interest to users), so we interpret the exact percentage of the category with some sampling effect consideration. As mentioned during the conference call, the lack of documented boat fishing is likely a result of missed timing to view quick launching and dispersal, rather than not being a recreational use conducted, as other information informs us it is.

Overall, it is important to note the 2020 sampling estimated 143,981 recreation days by users at the project facilities. We appreciate your efforts to work with the local community users as well as resource agency staff.

Janet

Janet Norman (she, her)  
Fish and Wildlife Biologist  
USFWS Chesapeake Bay Field Office  
(cell) 410-320-5519

Teleworking, not in this office space currently:

177 Admiral Cochrane Dr.  
Annapolis, MD 21401

## **APPENDIX B**

### **RECREATION SITE PHOTOS**



## TAILRACE FISHING AREA PHOTOS

Fishing Platform



Tailrace Access



## CHEAT LAKE TRAIL PHOTOS

Entrance to Southern Portion



Entrance to Northern Portion from Substation Parking Area



Storm Shelter Along Southern Portion of Cheat Lake Trail





## CHEAT LAKE PARK PHOTOS

Cheat Lake Park – Playground



Cheat Lake Park - Day-Use Boat Docks



Cheat Lake Park - Beach



Cheat Lake Park – Lower Picnic Area





## CHEAT LAKE PARK PHOTOS

Cheat Lake Park - Winter Boat Launch



Cheat Lake Park – Fishing Platform and Courtesy Pier



Cheat Lake Park - Upper Parking Area



Cheat Lake Park – Upper Picnic Area



**SUNSET BEACH MARINA PUBLIC BOAT RAMP PHOTO**



## **APPENDIX C**

### **RECREATION SITE FIELD INVENTORY FORMS**



Inspector: Will McNeil Date: 10/4/20 Time: 9:53 Photo No: \_\_\_\_\_  
 Project: Lake Lynn Site Name/Code: Tailwater Fishing Pier Weather: Cloudy 153°  
 Owner: LLG GPS Coordinates: \_\_\_\_\_

**Recreation Amenity Type:**

- |                          |                              |                      |                   |
|--------------------------|------------------------------|----------------------|-------------------|
| Boat Launch              | <del>Reservoir Fishing</del> | Picnic Area          | Winter Area       |
| Marina                   | Swim Area                    | Overlook/Vista       | Informal Use Area |
| Portage                  | Trails                       | Interpretive Display | Access Point      |
| <u>Tailwater Fishing</u> | Active Recreation Area       | Hunting Area         |                   |

**Access:**

- |  |                     |
|--|---------------------|
| <input type="checkbox"/> Water access                                | <u>2</u> # of lanes |
| <input checked="" type="checkbox"/> Paved access                     | _____ # of lanes    |
| <input type="checkbox"/> Unpaved access (conventional motor vehicle) | _____ # of lanes    |
| <input type="checkbox"/> Unpaved access (4WD vehicle)                | _____ width         |
| <input type="checkbox"/> ORV access (ATV)                            | _____ width         |
| <input type="checkbox"/> Foot access                                 |                     |

**Ownership/Management:**

	Licensee	Federal	State	County	Local	Private	Other
Ownership	<input checked="" type="checkbox"/>	_____	_____	_____	_____	_____	_____
Management	<input checked="" type="checkbox"/>	_____	_____	_____	_____	_____	_____

**Operations:**

Staffed N <sup>JAF</sup> Commercial N <sup>JAF</sup> Fee N <sup>JAF</sup> Open to public Y  
 Operating Schedule: year round <sup>JAF</sup>

**General Area:**

Is the area associated with other facilities or activities? NA  
 General Topography: Flat fishing area, hills leading up to site Erosion/Soils: NA  
 Compaction: NA Approximate Shoreline Footage: \_\_\_\_\_  
 Bank Fishing (Yes/No): (Yes)

**Sanitation Facilities: (Yes/No)**

Type:	Unisex	# of Units Women	# of Units Men	Notes (ADA, seasonal)
Flush	_____	_____	_____	_____
Composting	_____	_____	_____	_____
Vault	_____	_____	_____	_____
Pit	_____	_____	_____	_____
Portable	<u>1</u>	_____	_____	<u>seasonal</u>
Wilderness	_____	_____	_____	_____

fad note

Site Facilities:

#	Type	Condition (Good, Adequate, Poor)	GPS Coordinates	ADA/Other
_____	Picnic Tables	_____	_____	_____
_____	Grills	_____	_____	_____
_____	Firepit/ring	_____	_____	_____
_____	Trails (specify use and length)	_____	_____	_____
_____	Shelter	_____	_____	_____
_____	Potable Water	_____	_____	_____
_____	Boat Ramp	_____	_____	_____
_____	Launching Lanes	_____	_____	_____
_____	Playground	_____	_____	_____
_____	Benches	_____	_____	_____
_____	Interpretive Display:	_____	_____	_____
1	Part 8 Sign	good	_____	_____
16	Other Signage at Site:	good	_____	2 caution signs have previous
_____	Other: _____	_____	_____	licensee's name
_____	Other: _____	_____	_____	_____
_____	Other: _____	_____	_____	_____
_____	Other: _____	_____	_____	_____
_____	Other: _____	_____	_____	_____
_____	Other: _____	_____	_____	_____
_____	Other: _____	_____	_____	_____
_____	Other: _____	_____	_____	_____
_____	Other: _____	_____	_____	_____
_____	Other: _____	_____	_____	_____
_____	Other: _____	_____	_____	_____
_____	Other: _____	_____	_____	_____
_____	Other: _____	_____	_____	_____
_____	Other: _____	_____	_____	_____
_____	Other: _____	_____	_____	_____

Activities Occurring:	# of Adults	# of Minors	Total # of users
Picnicking	none	_____	_____
Camping	_____	_____	_____
Walking/hiking	_____	_____	_____
Swimming	_____	_____	_____
Beach Activities	_____	_____	_____
Launching boats	_____	_____	_____
Fishing	_____	_____	_____
Hunting	_____	_____	_____

Parking Areas: (Yes/No)	Surface Code	Dimensions
# ADA spaces	_____	_____
# Regular spaces	_____	approx. 124' x 53', spaces not delineated
# Vehicle & trailer spaces	_____	_____
# of vehicles parked	Space delineated <u>N</u>	Curbs _____



**Beach/Swim Area: (Yes/No)**

	Number	Dimensions	Material	ADA/Other
Dock/Pier	_____	_____	_____	_____
Float	_____	_____	_____	_____

Beach Area Substrate: \_\_\_\_\_ Swim Area Substrate: \_\_\_\_\_  
 Dimensions of Beach: \_\_\_\_\_ + \_\_\_\_\_  
 Dimensions of Buoyed Swim Area: \_\_\_\_\_  
 Lifeguards: \_\_\_\_\_

**Boat Launch Facilities: (Yes/No)**

Hard surface \_\_\_ Gravel \_\_\_ Unimproved \_\_\_ Carry In \_\_\_ Launch/load prep area \_\_\_

**Docks/Piers/Floats: (Yes/No)**

Total Docks	Total Slips				
Material code:	#1 _____	#2 _____	#3 _____	#4 _____	#5 _____
Dimensions:	#1 _____	#2 _____	#3 _____	#4 _____	#5 _____
# of slips:	#1 _____	#2 _____	#3 _____	#4 _____	#5 _____
ADA:	#1 _____	#2 _____	#3 _____	#4 _____	#5 _____

**Fishing Piers: (Yes/No)**

Number: 1 Length of each pier: ~100 ft.  
 Combined Length of Piers: ~100 ft.  
 Surface code: \_\_\_\_\_  
 ADA: Not explicitly stated

**Site Aesthetics:**

Viewshed from site: \_\_\_\_\_ Viewshed from shoreline: \_\_\_\_\_  
 1 - No noticeable development  
 2 - Very limited primitive development  
 3 - Five (5) or less buildings in view Dam in view, no houses  
 4 - Six (6) to ten (10) buildings in view  
 5 - Ten (10) or more buildings in view  
 6 - Highly developed

Nature of abutting development/land use: \_\_\_\_\_

Evidence of use at site: 6 at trash bins

\*(C) Compaction, (E) Erosion, (G) Garbage, (GD) Ground disturbance, (HW) Human waste, (UI) Unauthorized improvements, (V) Vandalism, (VR) Vegetation removal, (O) Other (Specify)

Evidence of Overcrowding: None

\*(A) Anecdotal information, (FA) Facility/amenity at capacity, (I) Improper parking, (S) Signage, (SD) Site degradation, (U) Unauthorized sites, (W) Waiting lines, (O) Other (Specify)

Notes: \_\_\_\_\_  
 \_\_\_\_\_  
 \_\_\_\_\_  
 \_\_\_\_\_  
 \_\_\_\_\_  
 \_\_\_\_\_

### Site Inventory Form

Inspector: JF Date: 10/2/20 Time: 4:00 pm Photo No: \_\_\_\_\_  
 Project: LL Site Name/Code: Substation Park Weather: Sunny, warm  
 Owner: LLG GPS Coordinates: \_\_\_\_\_

**Recreation Amenity Type:**

Boat Launch	Reservoir Fishing	Picnic Area	Winter Area
Marina	Swim Area	Overlook/Vista	Informal Use Area
Portage	<u>Trails</u> <i>Park/golf trails</i>	Interpretive Display	Access Point
Tailwater Fishing	Active Recreation Area	Hunting Area	

**Access:**

<input type="checkbox"/> Water access	
<input checked="" type="checkbox"/> Paved access	<u>2</u> # of lanes
<input type="checkbox"/> Unpaved access (conventional motor vehicle)	_____ # of lanes
<input type="checkbox"/> Unpaved access (4WD vehicle)	_____ # of lanes
<input type="checkbox"/> ORV access (ATV)	_____ width
<input checked="" type="checkbox"/> Foot access <i>from trail</i>	_____ width

**Ownership/Management:**

	Licensee	Federal	State	County	Local	Private	Other
Ownership	<input checked="" type="checkbox"/>	_____	_____	_____	_____	_____	_____
Management	<input checked="" type="checkbox"/>	_____	_____	_____	_____	_____	_____

**Operations:**

Staffed N Commercial N Fee N Open to public Y  
 Operating Schedule: Trail closes sunset (posted signage)

**General Area:**

Is the area associated with other facilities or activities? Great Lake Trail  
 General Topography: Sloped Erosion/Soils: N  
 Compaction: Gravel some ruts in parking area Approximate Shoreline Footage: N/A  
 Bank Fishing (Yes/No): (No)

**Sanitation Facilities: (Yes/No)**

Type:	Unisex	# of Units Women	# of Units Men	Notes (ADA, seasonal)
Flush	_____	_____	_____	_____
Composting	_____	_____	_____	_____
Vault	_____	_____	_____	_____
Pit	_____	_____	_____	_____
Portable	_____	_____	_____	_____
Wilderness	_____	_____	_____	_____

**Site Facilities:**

#	Type	Condition (Good, Adequate, Poor)	GPS Coordinates	ADA/Other
_____	Picnic Tables	_____	_____	_____
_____	Grills	_____	_____	_____
_____	Firepit/ring	_____	_____	_____
_____	Trails (specify use and length)	_____	_____	_____
_____	Shelter	_____	_____	_____
_____	Potable Water	_____	_____	_____
_____	Boat Ramp	_____	_____	_____
_____	Launching Lanes	_____	_____	_____
_____	Playground	_____	_____	_____
_____	Benches	_____	_____	_____
_____	Interpretive Display:	_____	_____	_____
1	Part 8 Sign	Good	_____	_____
_____	Other Signage at Site:	_____	_____	_____
1	Other: Rules	Good	_____	_____
1	Other: Station history	Good	_____	_____
_____	Other:	_____	_____	_____
_____	Other:	_____	_____	_____
_____	Other:	_____	_____	_____
_____	Other:	_____	_____	_____
_____	Other:	_____	_____	_____
_____	Other:	_____	_____	_____
_____	Other:	_____	_____	_____
_____	Other:	_____	_____	_____
_____	Other:	_____	_____	_____
_____	Other:	_____	_____	_____
_____	Other:	_____	_____	_____
_____	Other:	_____	_____	_____

Activities Occurring:	# of Adults	# of Minors	Total # of users
Picnicking	_____	_____	_____
Camping	_____	_____	_____
Walking/hiking	8	_____	8
Swimming	_____	_____	_____
Beach Activities	_____	_____	_____
Launching boats	_____	_____	_____
Fishing	_____	_____	_____
Hunting	_____	_____	_____
_____	_____	_____	_____

Parking Areas: (Yes/No)	Surface Code	Dimensions
# ADA spaces	_____	_____
# Regular spaces	20	_____
# Vehicle & trailer spaces	_____	_____
# of vehicles parked	3	_____
	Space delineated	Curbs
	None	N

Substation

**Beach/Swim Area: (Yes/No)**

	Number	Dimensions	Material	ADA/Other
Dock/Pier	_____	_____	_____	_____
Float	_____	_____	_____	_____

Beach Area Substrate: \_\_\_\_\_ Swim Area Substrate: \_\_\_\_\_  
 Dimensions of Beach: \_\_\_\_\_ + \_\_\_\_\_  
 Dimensions of Buoyed Swim Area: \_\_\_\_\_  
 Lifeguards: \_\_\_\_\_

**Boat Launch Facilities: (Yes/No)**

Hard surface \_\_\_\_\_ Gravel \_\_\_\_\_ Unimproved \_\_\_\_\_ Carry In \_\_\_\_\_ Launch/load prep area \_\_\_\_\_

**Docks/Piers/Floats: (Yes/No)**

	Total Docks		Total Slips		
Material code:	#1 _____	#2 _____	#3 _____	#4 _____	#5 _____
Dimensions:	#1 _____	#2 _____	#3 _____	#4 _____	#5 _____
# of slips:	#1 _____	#2 _____	#3 _____	#4 _____	#5 _____
ADA:	#1 _____	#2 _____	#3 _____	#4 _____	#5 _____

**Fishing Piers: (Yes/No)**

Number: \_\_\_\_\_ Length of each pier: \_\_\_\_\_  
 Combined Length of Piers: \_\_\_\_\_  
 Surface code: \_\_\_\_\_  
 ADA: \_\_\_\_\_

**Site Aesthetics:**

Viewshed from site: 3 Viewshed from shoreline: 3  
 1 – No noticeable development  
 2 – Very limited primitive development  
 3 – Five (5) or less buildings in view  
 4 – Six (6) to ten (10) buildings in view  
 5 – Ten (10) or more buildings in view  
 6 – Highly developed

Nature of abutting development/land use: Cheat Lake Trail, substation

Evidence of use at site: G, dog waste, E

\*(C) Compaction, (E) Erosion, (G) Garbage, (GD) Ground disturbance, (HW) Human waste, (UI) Unauthorized improvements, (V) Vandalism, (VR) Vegetation removal, (O) Other (Specify)

Evidence of Overcrowding: N

\*(A) Anecdotal information, (FA) Facility/amenity at capacity, (I) Improper parking, (S) Signage, (SD) Site degradation, (U) Unauthorized sites, (W) Waiting lines, (O) Other (Specify)

Notes: \_\_\_\_\_  
 \_\_\_\_\_  
 \_\_\_\_\_  
 \_\_\_\_\_  
 \_\_\_\_\_  
 \_\_\_\_\_  
 \_\_\_\_\_



### Site Inventory Form

Inspector: Will McNeil Date: 11/8/2020 Time: 1:23 PM Photo No: \_\_\_\_\_  
 Project: Lake Lynn Site Name/Code: Chest Lake Trail North Weather: Sunny, 73°  
 Owner: LLG GPS Coordinates: \_\_\_\_\_

**Recreation Amenity Type:**

Boat Launch	Reservoir Fishing	Picnic Area	Winter Area
Marina	Swim Area	Overlook/Vista	Informal Use Area
Portage	<u>Trails</u>	Interpretive Display	Access Point
Tailwater Fishing	Active Recreation Area	Hunting Area	

**Access:**

<input type="checkbox"/> Water access	
<input checked="" type="checkbox"/> Paved access	<u>2</u> # of lanes
<input type="checkbox"/> Unpaved access (conventional motor vehicle)	_____ # of lanes
<input type="checkbox"/> Unpaved access (4WD vehicle)	_____ # of lanes
<input type="checkbox"/> ORV access (ATV)	_____ width
<input checked="" type="checkbox"/> Foot access	<u>9 ft.</u> width

**Ownership/Management:**

	Licensee	Federal	State	County	Local	Private	Other
Ownership	<input checked="" type="checkbox"/>	_____	_____	_____	_____	_____	_____
Management	<input checked="" type="checkbox"/>	_____	_____	_____	_____	_____	_____

**Operations:**

Staffed \_\_\_\_\_ Commercial \_\_\_\_\_ Fee \_\_\_\_\_ Open to public Y  
 Operating Schedule: \_\_\_\_\_

**General Area:**

Is the area associated with other facilities or activities? NA  
 General Topography: flat trail, hill to enter/cross Erosion/Soils: Y, caution signs warn of unstable steep slopes  
 Compaction: NA Approximate Shoreline Footage: \_\_\_\_\_  
 Bank Fishing (Yes/No): Yes

**Sanitation Facilities: (Yes/No)**

Type:	Unisex	# of Units Women	# of Units Men	Notes (ADA, seasonal)
Flush	_____	_____	_____	_____
Composting	_____	_____	_____	_____
Vault	_____	_____	_____	_____
Pit	_____	_____	_____	_____
Portable	_____	_____	_____	_____
Wilderness	_____	_____	_____	_____



Trail North

**Beach/Swim Area: (Yes/No)**

	Number	Dimensions	Material	ADA/Other
Dock/Pier	_____	_____	_____	_____
Float	_____	_____	_____	_____

Beach Area Substrate: \_\_\_\_\_ Swim Area Substrate: \_\_\_\_\_  
 Dimensions of Beach: \_\_\_\_\_ + \_\_\_\_\_  
 Dimensions of Buoyed Swim Area: \_\_\_\_\_  
 Lifeguards: \_\_\_\_\_

**Boat Launch Facilities: (Yes/No)**

Hard surface \_\_\_\_\_ Gravel \_\_\_\_\_ Unimproved \_\_\_\_\_ Carry In \_\_\_\_\_ Launch/load prep area \_\_\_\_\_

**Docks/Piers/Floats: (Yes/No)**

Total Docks	Total Slips				
Material code:	#1 _____	#2 _____	#3 _____	#4 _____	#5 _____
Dimensions:	#1 _____	#2 _____	#3 _____	#4 _____	#5 _____
# of slips:	#1 _____	#2 _____	#3 _____	#4 _____	#5 _____
ADA:	#1 _____	#2 _____	#3 _____	#4 _____	#5 _____

**Fishing Piers: (Yes/No)**

Number: \_\_\_\_\_ Length of each pier: \_\_\_\_\_  
 Combined Length of Piers: \_\_\_\_\_  
 Surface code: \_\_\_\_\_  
 ADA: \_\_\_\_\_

**Site Aesthetics:**

Viewshed from site: \_\_\_\_\_ Viewshed from shoreline: \_\_\_\_\_  
 1 - No noticeable development      4 - Six (6) to ten (10) buildings in view  
 2 - Very limited primitive development      5 - Ten (10) or more buildings in view  
 3 - Five (5) or less buildings in view      6 - Highly developed

Nature of abutting development/land use: Dam in view, a few houses visible across the lake

Evidence of use at site: NA

\*(C) Compaction, (E) Erosion, (G) Garbage, (GD) Ground disturbance, (HW) Human waste, (UI) Unauthorized improvements, (V) Vandalism, (VR) Vegetation removal, (O) Other (Specify)

Evidence of Overcrowding: NA

\*(A) Anecdotal information, (FA) Facility/amenity at capacity, (I) Improper parking, (S) Signage, (SD) Site degradation, (U) Unauthorized sites, (W) Waiting lines, (O) Other (Specify)

Notes: \_\_\_\_\_  
 \_\_\_\_\_  
 \_\_\_\_\_  
 \_\_\_\_\_  
 \_\_\_\_\_  
 \_\_\_\_\_



### Site Inventory Form

Inspector: Will McNeil / Tonya [unclear] Date: 10/17/2010 Time: 11:29 AM Photo No: Fulcrum  
 Project: LL Site Name/Code: Cheat Lake Park Weather: No Clouds, 60°  
 Owner: UDA GPS Coordinates: includes upper parking + overflow parking

**Recreation Amenity Type:**

<u>Boat Launch</u>	<u>Reservoir Fishing</u>	<u>Picnic Area</u>	Winter Area
Marina	<u>Swim Area</u>	Overlook/Vista	Informal Use Area
Portage	<u>Trails</u>	Interpretive Display	Access Point
Tailwater Fishing	<u>Active Recreation Area</u>	Hunting Area	

**Access:**

<input checked="" type="checkbox"/> Water access	<u>Day use Boat docks, boat ramp</u>	<u>2</u> # of lanes	<u>to upper parking area</u>
<input checked="" type="checkbox"/> Paved access		_____ # of lanes	
_____ Unpaved access (conventional motor vehicle)		_____ # of lanes	
_____ Unpaved access (4WD vehicle)		_____ width	
_____ ORV access (ATV)		_____ width	
_____ Foot access			

**Ownership/Management:**

	Licensee	Federal	State	County	Local	Private	Other
Ownership	<u>2</u>	_____	_____	_____	_____	_____	_____
Management	<u>2</u>	_____	_____	_____	_____	_____	_____

**Operations:**

Staffed in accordance w/ Rec Plan Commercial N Fee N Open to public Y  
 Operating Schedule: Break/Woods Memorial Day to Labor Day

**General Area:**

Is the area associated with other facilities or activities? Cheat Lake Trail  
 General Topography: Flat steep hill + parking area Erosion/Soils: None  
 Compaction: None Approximate Shoreline Footage: \_\_\_\_\_  
 Bank Fishing (Yes/No): \_\_\_\_\_

**Sanitation Facilities: (Yes/No)**

Type:	Unisex	# of Units Women	# of Units Men	Notes (ADA, seasonal)
Flush	_____	<u>2 total</u>	<u>2 total (4 each building)</u>	<u>2 restroom buildings</u>
Composting	_____	_____	_____	_____
Vault	_____	_____	_____	_____
Pit	_____	_____	_____	_____
Portable	_____	_____	_____	_____
Wilderness	_____	_____	_____	_____



**Site Facilities:**

#	Type	Condition (Good, Adequate, Poor)	GPS Coordinates	ADA/Other
14	Picnic Tables	Good		
	Grills			
	Firepit/ring			
	Trails (specify use and length)			
3	Shelter	Good		2 over picnic tables, 1 storage
	Potable Water			
1	Boat Ramp	Good (1 lane)		
1	Launching Lanes	(at ramp)		
1	Playground	Good		
9	Benches	Good		
	Interpretive Display:			
1	Part 8 Sign	Good		
52	Other Signage at Site:	Good		Rules information
6	Other: <u>water break rooms</u>	Good		
1	Other: <u>fish cleaning</u>	Adequate		Dirty - need cleaning
	Other:			
	Other:			
	Other:			
	Other:			
	Other:			
	Other:			
	Other:			
	Other:			
	Other:			
	Other:			
	Other:			

Activities Occurring:	# of Adults	# of Minors	Total # of users
Picnicking			
Camping			
Walking/hiking	10	2	12
Swimming			
Beach Activities			
Launching boats			
Fishing	2		2
Hunting			

Parking Areas: (Yes/No)	Lower parking	Surface Code	Dimensions
# ADA spaces	6	Paved	
# Regular spaces	3 employee	Paved	
# Vehicle & trailer spaces			
# of vehicles parked		Space delineated	Curbs

Upper parking Area ~ 50 vehicles gravel trash receptacles 50' x 190' area  
 Over flow Gravel Parking area ~ 30 vehicles 37' x 155'

Beach/Swim Area: (Yes/No)

	Number	Dimensions	Material	ADA/Other
Dock/Pier	_____	_____	_____	_____
Float	_____	_____	_____	_____

Beach Area Substrate: Sand Some rocky debris Swim Area Substrate: sand  
 Dimensions of Beach: 90' x 21' + \_\_\_\_\_  
 Dimensions of Buoyed Swim Area: ~ 155' x 40'  
 Lifeguards: 0

Boat Launch Facilities: (Yes/No)

Hard surface X Gravel \_\_\_\_\_ Unimproved \_\_\_\_\_ Carry In \_\_\_\_\_ Launch/load prep area X

1 Courtesy dock at ramp

Docks/Piers/Floats: (Yes/No)

Day use boat docks

Total Docks	Total Slips					
<u>8</u>	<u>16</u>					
Material code:	#1 <u>wood</u>	#2 _____	#3 _____	#4 _____	#5 _____	
Dimensions:	<u>5x25'</u> #1 _____	#2 _____	#3 _____	#4 _____	#5 _____	
# of slips:	<u>each</u> #1 _____	#2 _____	#3 _____	#4 _____	#5 _____	
ADA:	<u>No</u> #1 _____	#2 _____	#3 _____	#4 _____	#5 _____	

Fishing Piers: (Yes/No)

Number: 2 Length of each pier: 200' x 8'  
 Combined Length of Piers: 400'  
 Surface code: wood  
 ADA: Yes

2 small courtesy piers in embayments

Site Aesthetics:

Viewshed from site: 4 Viewshed from shoreline: 4  
 1 - No noticeable development  
 2 - Very limited primitive development  
 3 - Five (5) or less buildings in view  
 4 - Six (6) to ten (10) buildings in view  
 5 - Ten (10) or more buildings in view  
 6 - Highly developed

Nature of abutting development/land use: wooded land

Evidence of use at site: \_\_\_\_\_

\*(C) Compaction, (E) Erosion, (G) Garbage, (GD) Ground disturbance, (HW) Human waste, (UI) Unauthorized improvements, (V) Vandalism, (VR) Vegetation removal, (O) Other (Specify)

Evidence of Overcrowding: I = on busy weekends

\*(A) Anecdotal information, (FA) Facility/amenity at capacity, (I) Improper parking, (S) Signage, (SD) Site degradation, (U) Unauthorized sites, (W) Waiting lines, (O) Other (Specify)

Notes: \_\_\_\_\_  
 \_\_\_\_\_  
 \_\_\_\_\_  
 \_\_\_\_\_  
 \_\_\_\_\_  
 \_\_\_\_\_  
 \_\_\_\_\_

## Site Inventory Form

Inspector: Joyce Turner, 10/11/11, NE Date: 10/11/11 Time: 12:30 Photo No: \_\_\_\_\_  
 Project: \_\_\_\_\_ Site Name/Code: Sunco Bay Marina Weather: Slight Rain 67°  
 Owner: LLG GPS Coordinates: 42° 14' 12" N 71° 12' 12" W

### Recreation Amenity Type:

- |   |   |   |  |
|---|---|---|--|
| <input checked="" type="checkbox"/> Boat Launch | <input type="checkbox"/> Reservoir Fishing      | <input type="checkbox"/> Picnic Area          | <input type="checkbox"/> Winter Area       |
| <input checked="" type="checkbox"/> Marina      | <input type="checkbox"/> Swim Area              | <input type="checkbox"/> Overlook/Vista       | <input type="checkbox"/> Informal Use Area |
| <input type="checkbox"/> Portage                | <input type="checkbox"/> Trails                 | <input type="checkbox"/> Interpretive Display | <input type="checkbox"/> Access Point      |
| <input type="checkbox"/> Tailwater Fishing      | <input type="checkbox"/> Active Recreation Area | <input type="checkbox"/> Hunting Area         |  |

### Access:

- |  |                     |
|--|---------------------|
| <input checked="" type="checkbox"/> Water access                     |                     |
| <input checked="" type="checkbox"/> Paved access                     |                     |
| <input type="checkbox"/> Unpaved access (conventional motor vehicle) | <u>2</u> # of lanes |
| <input type="checkbox"/> Unpaved access (4WD vehicle)                | _____ # of lanes    |
| <input type="checkbox"/> ORV access (ATV)                            | _____ # of lanes    |
| <input type="checkbox"/> Foot access                                 | _____ width         |
|  | _____ width         |

### Ownership/Management:

	Licensee	Federal	State	County	Local	Private	Other
Ownership	<u>✓</u>	_____	_____	_____	_____	_____	_____
Management	_____	_____	_____	_____	_____	_____	_____

### Operations:

Staffed Marina Shop Commercial \_\_\_\_\_ Fee \_\_\_\_\_ Open to public Yes  
 Operating Schedule: year round - lake level dependent

### General Area:

Is the area associated with other facilities or activities? N  
 General Topography: Flat Erosion/Soils: NA  
 Compaction: NA Approximate Shoreline Footage: \_\_\_\_\_  
 Bank Fishing (Yes/No): \_\_\_\_\_

### Sanitation Facilities: (Yes/No)

Type:	Unisex	# of Units Women	# of Units Men	Notes (ADA, seasonal)
Flush	_____	_____	_____	_____
Composting	_____	_____	_____	_____
Vault	_____	_____	_____	_____
Pit	_____	_____	_____	_____
Portable	<u>1</u>	_____	_____	<u>(at restaurant)</u>
Wilderness	_____	_____	_____	_____

Site Facilities:		Condition	GPS	ADA/Other
#	Type	(Good, Adequate, Poor)	Coordinates	
_____	Picnic Tables	_____	_____	_____
_____	Grills	_____	_____	_____
_____	Firepit/ring	_____	_____	_____
_____	Trails (specify use and length)	_____	_____	_____
_____	Shelter	_____	_____	_____
_____	Potable Water	_____	_____	Marina Shop
1	Boat Ramp	Good	_____	_____
2	Launching Lanes	Good	_____	_____
_____	Playground	_____	_____	_____
_____	Benches	_____	_____	_____
_____	Interpretive Display:	_____	_____	_____
1	Part 8 Sign	Good	_____	_____
2	Other Signage at Site:	Good	_____	_____
1	Other: <u>Disaster</u>	Good	_____	_____
_____	Other:	_____	_____	_____
_____	Other:	_____	_____	_____
_____	Other:	_____	_____	_____
_____	Other:	_____	_____	_____
_____	Other:	_____	_____	_____
_____	Other:	_____	_____	_____
_____	Other:	_____	_____	_____
_____	Other:	_____	_____	_____
_____	Other:	_____	_____	_____
_____	Other:	_____	_____	_____
_____	Other:	_____	_____	_____
_____	Other:	_____	_____	_____
_____	Other:	_____	_____	_____
_____	Other:	_____	_____	_____
_____	Other:	_____	_____	_____

Activities Occurring:	# of Adults	# of Minors	Total # of users
Picnicking	_____	_____	_____
Camping	_____	_____	_____
Walking/hiking	_____	_____	_____
Swimming	_____	_____	_____
Beach Activities	_____	_____	_____
Launching boats <u>take out</u>	4 (2 boats take out)	_____	4
Fishing	_____	_____	_____
Hunting	_____	_____	_____
_____	_____	_____	_____

Parking Areas: (Yes/No)	Surface Code	Dimensions
# ADA spaces	_____	_____
# Regular spaces	_____	_____
# Vehicle & trailer spaces	_____	_____
# of vehicles parked	~ 85	~ 385' x 130'
	34	Space delineated <u>N</u> Curbs <u>IV</u>

**Beach/Swim Area: (Yes/No)**

	Number	Dimensions	Material	ADA/Other
Dock/Pier	_____	_____	_____	_____
Float	_____	_____	_____	_____

Beach Area Substrate: \_\_\_\_\_ Swim Area Substrate: \_\_\_\_\_  
 Dimensions of Beach: \_\_\_\_\_ + \_\_\_\_\_  
 Dimensions of Buoyed Swim Area: \_\_\_\_\_  
 Lifeguards: \_\_\_\_\_

**Boat Launch Facilities: (Yes/No)**

Hard surface  Gravel \_\_\_\_\_ Unimproved \_\_\_\_\_ Carry In \_\_\_\_\_ Launch/load prep area \_\_\_\_\_

**Docks/Piers/Floats: (Yes/No)**

Total Docks 10 available for public use Total Slips \_\_\_\_\_

Material code:	#1 _____	#2 _____	#3 _____	#4 _____	#5 _____
Dimensions:	#1 _____	#2 _____	#3 _____	#4 _____	#5 _____
# of slips:	#1 _____	#2 _____	#3 _____	#4 _____	#5 _____
ADA:	#1 _____	#2 _____	#3 _____	#4 _____	#5 _____

**Fishing Piers: (Yes/No)**

Number: \_\_\_\_\_ Length of each pier: \_\_\_\_\_  
 Combined Length of Piers: \_\_\_\_\_  
 Surface code: \_\_\_\_\_  
 ADA: \_\_\_\_\_

**Site Aesthetics:**

Viewshed from site: 5 Viewshed from shoreline: \_\_\_\_\_  
 1 - No noticeable development  
 2 - Very limited primitive development  
 3 - Five (5) or less buildings in view  
 4 - Six (6) to ten (10) buildings in view  
 5 - Ten (10) or more buildings in view  
 6 - Highly developed

Nature of abutting development/land use: residential / boat storage

Evidence of use at site: \_\_\_\_\_

\*(C) Compaction, (E) Erosion, (G) Garbage, (GD) Ground disturbance, (HW) Human waste, (UI) Unauthorized improvements, (V) Vandalism, (VR) Vegetation removal, (O) Other (Specify)

Evidence of Overcrowding: improper parking on busy weekdays

\*(A) Anecdotal information, (FA) Facility/amenity at capacity, (I) Improper parking, (S) Signage, (SD) Site degradation, (U) Unauthorized sites, (W) Waiting lines, (O) Other (Specify)

Notes: \_\_\_\_\_  
 \_\_\_\_\_  
 \_\_\_\_\_  
 \_\_\_\_\_  
 \_\_\_\_\_  
 \_\_\_\_\_